

# You live in the Bear Buffer Zone.

Starting April 30th, all  
garbage must be stored in a  
bear resistant container or  
bear resistant enclosure.



Bear resistant containers must be  
certified by the Interagency Grizzly Bear  
Committee (IGBC) or approved by a  
Montana FWP bear management team  
biologist.

Under the new rules, a standard garbage  
container cannot be used unless it is in  
an approved bear resistant enclosure  
that is directly accessible by the hauler.

**Don't overfill your container**

**Containers must be fully closed with  
the lid latched.**

Bear resistant containers only work if  
bears can't access the garbage.

Bear resistant containers can be put out  
for collection the night before pickup,  
but they must be brought back from the  
road within 8 hours of collection.\*

\*This does not apply to alleys.

If you do not already have an IGBC  
certified container, you can rent a bear  
resistant container from your garbage  
hauler or purchase a container that is  
compatible with their collection method.

**Call your current hauler before you buy!**  
**Grizzly Disposal      Republic Services**  
**(406) 541-7171      (406) 543-3157**

For a list of approved containers, visit  
<https://igbconline.org/programs/bear-resistant-products/>

If you already lease a container from  
your hauler, they will automatically  
change it out before or shortly after  
April 30th.

Grizzly Disposal uses  
**Toter** containers.



Republic Services uses  
**Kodiak** containers.





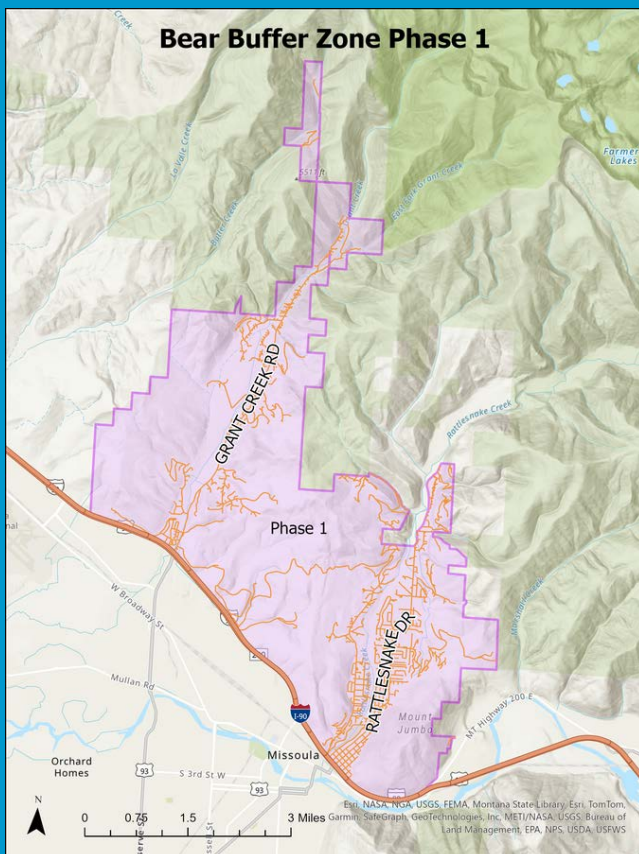
**49% of human-bear conflicts in Missoula are caused by unsecured garbage.**

## **These rules are in place to reduce human-bear conflicts and to protect people, property and bears.**

Numerous black bears live in and around the Missoula Valley. In recent years, grizzlies have become more common. Bears are attracted to the area, because it's easy to find food here. Once bears become conditioned to eating garbage, they may have to be relocated or euthanized to keep us safe. Even then, new bears will move in if unsecured garbage is still available.

For more information or to report bear sightings, visit [missoulabears.org](https://missoulabears.org).

To determine if you are in the Bear Buffer Zone, visit <https://gis.missoulacounty.us/propertyinformation>, enter your address, and click on facts.



If you are a landlord, please pass this information on to your tenants in the Bear Buffer Zone.

### How to use your bear resistant can

#### **Toter**

Fully Automated 64-gallon Cart

Squeeze the lock and lift the lid with your other hand



#### **Northland Products**

Kodiak Fully Automated 65 & 95-gallon Carts

Swipe the latch left to right with your index finger and lift the lid with your other hand



If you have questions about these rules, contact Missoula Public Health at [envhealth@missoulacounty.us](mailto:envhealth@missoulacounty.us) or (406) 258-4755