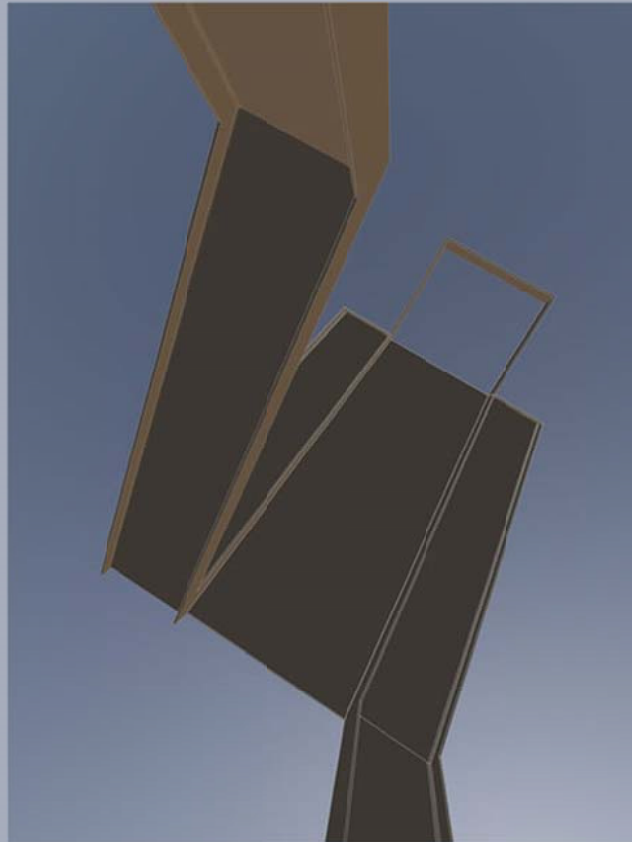


PERSEVERANCE AND PASSAGE

George Ybarra is a professional metal sculptor who has worked both as an artist and curator in Missoula since 1994. Ybarra has created a broad body of work for both private collectors and local businesses. Ybarra's metal fabrications combine aspects of modern art with the uninhibited landscape to form original sculpture. The artist states that "Perseverance and Passage" is intended to commemorate both the transitions of this steadfast area of Missoula and the endurance of the many travelers who have found their way along the Clark Fork River while at the same time acknowledging the dedication of the industrial mill workers who worked at the mill site over the years.



Please join us for the formal dedication of
'Perseverance and Passage'
to Missoula's Silver Park.

August 7, 2015
6:00pm under the Main Pavilion (south)
Words from the artist, George Ybarra
Mayor John Engen

Refreshments will be served

Thank You to Our Generous Benefactors

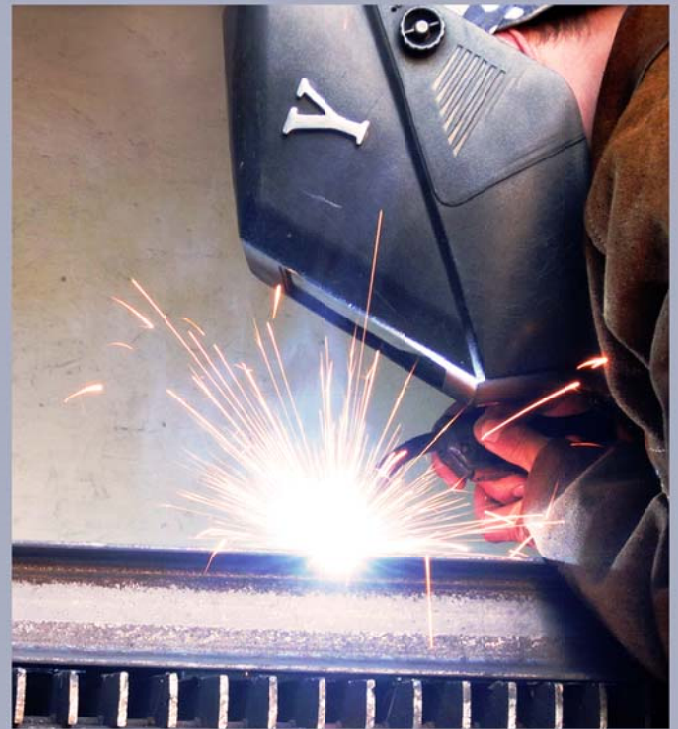
Missoula Redevelopment Agency
City of Missoula One Percent for Art
The Morris and Helen Silver Foundation



Silver Family Foundation

PERSEVERANCE AND PASSAGE

George Ybarra is a professional metal sculptor who has worked as both an artist and curator. Ybarra was born and raised in Montana and has resided in Missoula since 1989. Ybarra's sculpture emerges from objects viewed in the environment around him. These observations are fabricated into a broad range of sculptures.



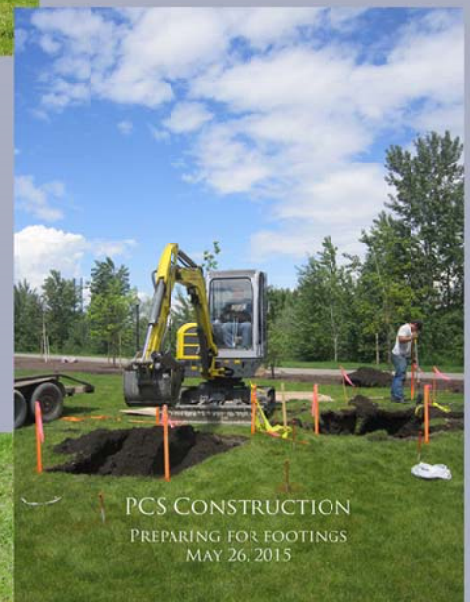
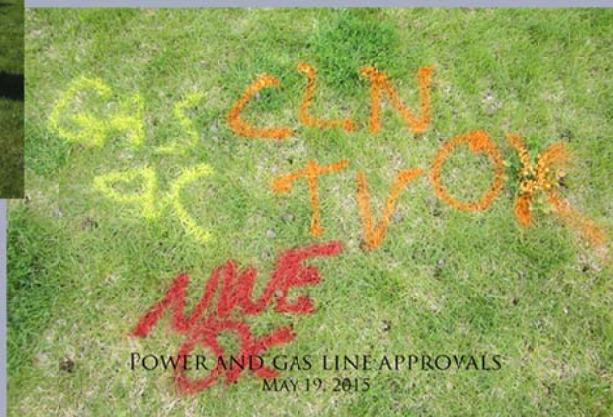
Ybarra has created a large body of work for private collectors across the northwest. He has exhibited his sculpture both regionally and internationally. His work is currently represented by the White Bird Gallery in Cannon Beach, Oregon.

Ybarra's metal fabrications combine aspects and essentials of modern art with the landscape to form original sculpture. Over the years, several distinct series of work have emerged and continue to inspire further exploration.

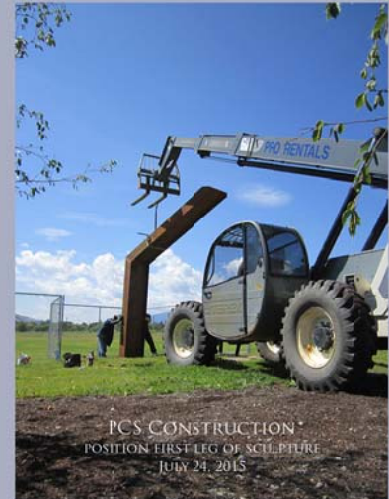
Ybarra is the founder and curator of the Annual Caras Nursery Outdoor Sculpture Exhibit, which is in its 11th year. This community art event features regional sculpture. It enables artists to explore the connection between their art and environment in an outdoor setting.

Email: ybarrasteel@gmail.com
Telephone: (406)728-3892
Facebook: (george.ybarra.52)

PERSEVERANCE AND PASSAGE



PERSEVERANCE AND PASSAGE



PERSEVERANCE AND PASSAGE



Many Thanks to the following Organizations,
Companies and Individuals for their Immeasurable
Assistance to this Project.

Tom Beaudette Engineering Inc.
Peter Costello, CADMONT
Mike Day, Territorial Landworks, Inc.
Mayor John Engen
One Percent for Art
Missoula Redevelopment Agency
Missoula Developement Services
Jim Kane, PCS Construction
Bryan Muzzana
Arnie Nogle, PCS Construction
Missoula Public Art Committee
Wade Sellers, PCS Construction
Cory Walsh, Missoulain Entertainer
The Morris and Helen Silver Foundation
Ezra Williams, CTA Architects
Bob Worthen, Missoula Parks and Recreation

PERSEVERANCE AND PASSAGE

Old Sawmill District

Once a vital part of the wood products industry in Western Montana, the Old Sawmill District operated as a lumber mill using the adjacent Clark Fork River. Now the Old Sawmill District in Missoula, Montana is an example of brownfield revitalization and infill development incorporating adaptive re-use, environmental clean-up, expansion of the riverfront park system, and urban mixed-use design.

Located within easy walking distance to downtown, the University of Montana and major employers, the district includes mixed-use residential and commercial property, town home and single-family housing, recreational trails, parks and a baseball stadium.

Reuse and Renewal

Nearly all of the materials that had to be removed from the mill site have been salvaged for other uses, most of which will be reused on the mill site. 15,000 tons of wood waste has been removed from the site and will be composted and reused in city parks. Old concrete foundations were dug out and crushed, then used to fill excavated log ponds along with other fill material from the site. Abandoned buildings were deconstructed and materials used to build shelters in Silver Park.