

CITY OF MISSOULA, MONTANA
FUND BALANCES OF GOVERNMENTAL FUNDS
Last Ten Fiscal Years
(modified accrual basis of accounting)

	Fiscal Year									
	2004	2005	2006	2007	2008	2009	2010	2011	2012	2013
General Fund										
Reserved	\$ 396,988	\$ 639,060	\$ 588,145	\$ 759,606	\$ 558,624	\$ 699,325	\$ 740,667	\$ -	\$ -	\$ -
Unreserved	1,450,347	1,167,446	1,341,370	1,365,053	643,449	201,062	1,348,317	-	-	-
Nonspendable*	-	-	-	-	-	-	-	1,148,767	1,232,302	1,259,186
Restricted*	-	-	-	-	-	-	-	165,282	105,804	157,822
Assigned*	-	-	-	-	-	-	-	1,203,481	1,284,045	1,757,237
Unassigned*	-	-	-	-	-	-	-	1,152,657	1,940,474	2,968,122
Total General Fund	<u>\$ 1,847,335</u>	<u>\$ 1,806,506</u>	<u>\$ 1,929,515</u>	<u>\$ 2,124,659</u>	<u>\$ 1,202,073</u>	<u>\$ 900,387</u>	<u>\$ 2,088,984</u>	<u>\$ 3,670,187</u>	<u>\$ 4,562,625</u>	<u>\$ 6,142,367</u>
All other governmental funds										
Reserved	\$ 2,993,025	\$ 3,280,061	\$ 3,602,376	\$ 3,007,558	\$ 3,175,573	\$ 3,654,339	\$ 3,869,555	\$ -	\$ -	\$ -
Unreserved, reported in:										
Special revenue funds	2,458,951	2,124,775	1,939,572	1,462,685	3,208,509	3,814,089	4,124,600	-	-	-
Debt service funds	-	-	-	-	-	-	-	-	-	-
Capital projects funds	7,692,538	7,181,073	(5,290,370)	521,612	(1,471,297)	(4,728,035)	(4,089,044)	-	-	-
Nonspendable*	-	-	-	-	-	-	-	11,505	12,042	-
Restricted*	-	-	-	-	-	-	-	7,911,860	7,409,318	6,789,639
Committed*	-	-	-	-	-	-	-	1,374,228	2,048,128	2,892,425
Unassigned*, reported in:										
Special revenue funds	-	-	-	-	-	-	-	(332,574)	(149,817)	(105,325)
Debt service funds	-	-	-	-	-	-	-	(36,421)	(174,575)	(23,761)
Capital projects funds	-	-	-	-	-	-	-	(3,962,631)	(4,602,847)	(645,428)
Neighborhood stabilization funds	-	-	-	-	-	-	-	-	(4,139)	-
Total other governmental funds	<u>\$ 13,144,514</u>	<u>\$ 12,585,909</u>	<u>\$ 251,578</u>	<u>\$ 4,991,855</u>	<u>\$ 4,912,785</u>	<u>\$ 2,740,393</u>	<u>\$ 3,905,111</u>	<u>\$ 4,965,967</u>	<u>\$ 4,538,110</u>	<u>\$ 8,907,550</u>

Source: City of Missoula

* Restated to conform to GASB Statement No. 54

STATISTICAL SECTION

CITY OF MISSOULA, MONTANA CHANGES IN FUND BALANCES OF GOVERNMENTAL FUNDS Last Ten Fiscal Years (modified accrual basis of accounting)

	Fiscal Year									
	2004	2005	2006	2007	2008	2009	2010	2011	2012	2013
Revenues										
Taxes and assessments	\$ 18,956,194	\$ 19,470,666	\$ 22,340,804	\$ 24,128,385	\$ 25,071,209	\$ 26,649,687	\$ 27,445,555	\$ 28,256,587	\$ 29,396,016	\$ 31,729,767
Licenses and permits	2,318,146	3,165,413	2,839,058	2,927,474	4,054,474	2,753,704	3,050,653	3,092,436	2,866,229	3,227,926
Intergovernmental	11,091,624	14,238,028	13,208,755	13,035,698	12,747,140	13,147,938	20,456,138	17,531,499	25,130,561	17,665,516
Charges for services	2,700,372	3,298,503	3,625,225	4,540,977	3,911,813	4,439,499	4,475,126	5,160,326	5,106,399	6,057,449
Fines and forfeitures	857,707	1,223,864	1,178,920	1,421,588	1,215,955	1,130,177	1,203,587	1,008,945	1,344,578	1,565,130
Miscellaneous	520,337	309,781	949,537	975,534	1,699,515	1,168,486	1,464,092	1,205,961	613,255	625,976
Interest earnings	449,387	226,538	192,758	538,418	584,698	156,522	63,362	32,409	41,691	47,961
Total revenues	36,893,767	41,932,793	44,335,057	47,568,074	49,284,804	49,446,013	58,158,513	56,288,163	64,498,728	60,919,725
Expenditures										
General government	4,718,579	4,501,423	6,334,244	5,745,356	6,515,738	7,752,035	7,252,975	6,493,866	6,949,250	8,034,601
Public safety	15,420,765	16,957,739	18,138,794	19,880,732	21,637,023	21,669,039	22,227,258	22,431,087	23,834,156	25,803,943
Public works	5,239,404	5,765,617	5,803,509	6,161,928	6,670,377	6,624,812	6,577,834	7,962,836	7,437,537	7,393,392
Public health	1,008,837	1,096,344	1,152,195	1,249,223	1,364,663	1,404,043	1,368,398	1,372,380	1,431,431	1,482,096
Social and economic	100,706	105,238	108,395	132,897	115,000	118,450	118,450	116,000	116,000	116,000
Culture and recreation	2,468,401	2,719,381	3,011,054	3,676,479	3,118,438	3,278,075	3,293,005	3,289,120	3,528,049	3,838,271
Community development	681,088	2,129,109	2,379,741	2,202,392	2,041,498	1,193,372	4,017,676	2,264,947	10,348,859	1,238,419
Conservation of natural resources	-	-	-	-	-	-	7,757	450	100	120
Miscellaneous	795,362	910,387	-	947,093	-	-	1,041,180	1,189,351	1,003,472	1,049,647
Debt service - principal	4,369,674	2,432,981	2,783,319	6,127,301	2,973,898	3,026,661	3,121,407	3,484,312	3,689,100	3,057,702
Debt service - interest	1,126,448	1,428,517	1,357,860	1,671,508	1,665,936	1,595,937	1,584,136	1,595,391	1,556,195	2,531,043
Capital outlay	6,514,225	4,980,661	18,496,532	9,116,240	7,575,647	5,401,985	8,518,735	7,777,324	6,202,777	6,863,986
Total expenditures	42,443,489	43,027,397	59,565,643	56,911,149	53,678,218	52,064,409	59,128,811	57,977,065	66,096,927	61,409,220
Excess of revenues over (under) expenditures	(5,549,722)	(1,094,604)	(15,230,586)	(9,343,075)	(4,393,414)	(2,618,396)	(970,298)	(1,688,902)	(1,598,199)	(489,495)
Other financing sources (uses)										
Transfers in	5,474,240	4,833,042	5,338,325	7,003,875	4,551,456	5,343,911	5,531,051	4,989,066	7,143,975	7,539,764
Transfers out	(5,283,345)	(4,675,148)	(5,170,043)	(6,821,059)	(4,665,834)	(5,282,309)	(5,557,582)	(4,797,139)	(7,478,899)	(8,145,604)
Payments to Refunded Bond Escrow Agent	-	-	-	(2,037,769)	-	-	(983,591)	-	-	(5,541,672)
Refunding Bond Proceeds	-	-	-	4,355,000	-	-	1,000,000	-	-	5,480,000
Premium on Refunded Bonds	-	-	-	-	-	-	-	-	-	152,081
Proceeds from long term debt	18,759,366	994,921	2,850,881	11,574,351	2,378,354	-	3,276,941	4,168,336	2,559,396	1,895,150
Proceeds from sale of capital assets	228,088	46,347	100	-	840,620	82,716	56,794	-	-	22,171
Total other financing sources (uses)	19,178,349	1,199,162	3,019,263	14,074,398	3,104,596	144,318	3,323,613	4,360,263	2,224,471	1,401,890
Net change in fund balances	\$ 13,628,627	\$ 104,558	\$ (12,211,323)	\$ 4,731,323	\$ (1,288,818)	\$ (2,474,078)	\$ 2,353,315	\$ 2,671,361	\$ 626,272	\$ 912,395
Debt service as a percentage of non-capital expenditures	18%	15%	12%	23%	12%	12%	11%	12%	10%	12%

Source: City of Missoula

**CITY OF MISSOULA, MONTANA
OVERLAPPING PROPERTY TAX LEVIES
Last Ten Fiscal Years**

Taxing Authority	2005	2006	2007	2008	2009	2010	2011	2012	2013	2014
City of Missoula	182.57	196.39	204.73	212.23	222.45	222.45	225.56	233.24	240.90	243.52
County of Missoula										
County Wide	127.12	129.11	133.64	136.19	140.35	138.94	139.80	142.47	145.04	150.32
County Wide Schools	101.59	102.26	104.26	104.04	105.61	104.62	103.45	100.94	100.17	104.60
Total	228.71	231.37	237.90	240.23	245.96	243.56	243.25	243.41	245.21	254.92
District Schools										
School District One	158.29	150.66	150.26	145.45	140.24	142.75	141.50	145.18	141.88	148.94
High Schools	83.16	83.40	82.21	77.05	79.13	76.46	74.63	76.44	71.92	72.19
Total	241.45	234.06	232.47	222.50	219.37	219.21	216.13	221.62	213.80	221.13
State Levies										
University	6.00	6.00	6.00	6.00	6.00	6.00	6.00	6.00	6.00	6.00
Education Foundation	40.00	40.00	40.00	40.00	40.00	40.00	40.00	40.00	40.00	40.00
Total	46.00	46.00	46.00	46.00	46.00	46.00	46.00	46.00	46.00	46.00
Urban Transportation District	12.23	12.38	13.91	14.62	14.86	16.30	16.45	17.69	19.51	21.05
Total Levy on City Residents	<u>710.96</u>	<u>720.20</u>	<u>735.01</u>	<u>735.58</u>	<u>748.64</u>	<u>747.52</u>	<u>747.39</u>	<u>761.96</u>	<u>765.42</u>	<u>786.62</u>
Overall Property Tax Increase(Decrease)	0.29%	1.30%	2.06%	0.08%	1.78%	-0.15%	-0.02%	1.95%	0.45%	2.77%
Other Levies of Interest										
County Only	33.97	31.83	34.50	35.68	35.80	35.80	36.18	36.18	36.38	36.370
Missoula Rural Fire	78.26	79.64	80.89	91.13	94.13	94.13	97.97	97.97	100.33	102.390

Source: County of Missoula Accounting Office
Note: MRA doesn't get University mills.

**CITY OF MISSOULA, MONTANA
ESTIMATED MARKET VALUE, TAXABLE VALUE AND MILL LEVY
Last Ten Fiscal Years**

<u>Fiscal Year</u>	<u>Estimated Market Value</u>	<u>Taxable Value City Without Tax Increment</u>	<u>Ratio of Total Assessed Value to Total Estimated Market Value</u>	<u>Taxable Value Tax Increment Districts</u>	<u>Mill Levy</u>
2005	\$ 2,636,857,585	\$ 84,586,453	3.21%	\$ 3,603,495	182.57
2006	2,805,424,077	91,358,406	3.26%	3,844,866	196.39
2007	2,901,638,641	93,533,579	3.22%	1,446,959	204.73
2008	3,195,587,513	99,332,558	3.11%	1,806,159	212.23
2009	3,369,424,088	103,000,436	3.06%	1,909,938	222.45
2010	3,757,969,949	104,408,018	2.78%	4,507,159	222.45
2011	3,965,146,053	106,229,033	2.68%	5,245,004	225.56
2012	4,140,685,284	107,878,992	2.61%	5,114,782	233.24
2013	4,110,699,383	108,167,019	2.63%	4,530,936	240.90
2014	4,305,020,382	109,336,360	2.54%	4,732,437	243.52

Source: Missoula County Assessors Office

CITY OF MISSOULA, MONTANA
ASSESSED VALUE AND ESTIMATED TAXABLE VALUE OF PROPERTY
Last Ten Fiscal Years
(in thousands of dollars)

Fiscal Year	Real Property	Equipment & Fixtures	Electric, Airline & Telecommunications	Railroad	Electric, Phone Co-ops & Pollution Control	Other	Tax Increment District	Total Taxable Assessed Value
2005	\$ 78,436	\$ 4,362	\$ 4,902	\$ 372	\$ 363	\$ (246)	\$ (3,603)	\$ 84,586
2006	81,061	4,529	4,999	363	380	27	(3,845)	87,514
2007	84,231	4,697	5,291	346	379	61	(1,471)	93,534
2008	91,045	4,474	7,475	313	382	-	(1,806)	101,883
2009 ^	-	-	-	-	-	-	-	-
2010	96,352	5,133	3,585	348	380	3,117	(4,507)	104,408
2011	96,914	4,785	5,304	397	393	3,681	(5,245)	106,229
2012	98,235	4,851	5,376	402	398	3,732	(5,115)	107,879
2013	98,669	3,852	5,175	440	407	4,154	(4,531)	108,167
2014	99,741	4,086	4,928	587	346	4,350	(4,732)	109,305

*Property in the City does have a Market Value is assessed at actual value at a rate of 2.5%; therefore, the assessed values are equal to actual value.

*This table presents taxable property assessments at values calculated after certified values were received from the Department of Revenue. These values will not articulate to certified values due to the date that this report is run by the Department of Revenue.

^ 2009 Values are no longer available due to Department of Revenue (DOR) software constraints and timing issues in FY2009.

Source: Missoula County Assessor's Office and Department of Revenue.

**CITY OF MISSOULA, MONTANA
PROPERTY VALUE AND NEW CONSTRUCTION
Last Ten Fiscal Years**

Fiscal Year	Assessed Value City Property	New Construction						% Change Over Last Year
		Single Family		Multi-Family		All Construction		
		Number	Value Estimate	Number	Value Estimate	Number	Value Estimate	
2004	\$ 2,403,250,454	367	\$ 31,611,232	359	\$ 15,081,537	1,663	\$ 109,963,100	-43.31%
2005	2,636,857,585	457	38,970,878	194	8,157,757	1,677	113,217,490	2.96%
2006	2,805,424,077	374	35,521,132	79	4,393,527	1,494	99,855,627	-11.80%
2007	2,901,638,641	303	31,466,438	153	7,595,391	1,613	89,139,379	-10.73%
2008	3,195,587,513	229	21,554,764	154	9,711,099	1,530	133,165,009	49.39%
2009	3,369,424,088	142	11,627,586	73	3,019,865	1,291	63,987,567	-51.95%
2010	3,757,969,949	139	12,643,362	63	2,552,415	1,306	54,867,213	-14.25%
2011	3,965,146,053	95	8,892,276	262	17,010,385	1,283	87,790,572	60.01%
2012	4,140,685,284	96	9,675,751	329	15,186,996	1,395	58,443,007	-33.43%
2013	4,110,699,383	127	11,284,179	371	14,682,857	1,485	68,558,394	17.31%

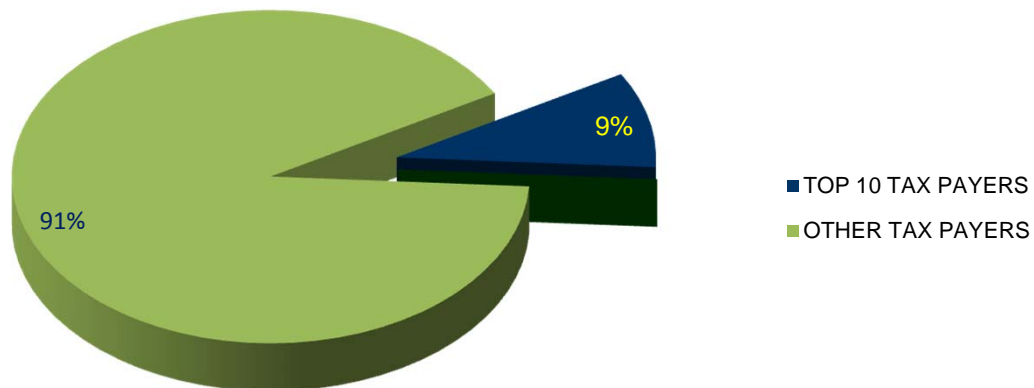
Source: City of Missoula Building Inspection Office and Missoula County Assessor

**CITY OF MISSOULA
FOR FY 2013 - FY 2014**

Rank	Taxpayer	Taxable Value
1	NORTHWESTERN CORPORATION	\$ 3,225,247
2	QWEST COMMUNICATIONS	1,632,708
3	BRESNAN COMMUNICATIONS	1,097,194
4	MOUNTAIN WATER COMPANY	952,986
5	CELLCO PARTNERSHIP DBA VERIZON	760,955
6	SOUTHGATE MALL	703,949
7	GATEWAY LIMITED PARTNERSHIP	570,011
8	ST PATRICK HOSPITAL CORPORATION	462,068
9	MONTANA RAIL LINK	383,021
10	FIRST INTERSTATE BANK	349,036
		<u><u>\$ 10,137,175</u></u>

SOUTHGATE MALL

**Top 10 Taxpayers as compared to
remaining taxpayers**



**CITY OF MISSOULA, MONTANA
PROPERTY TAX LEVIES AND COLLECTIONS
GOVERNMENTAL FUND TYPES
Last Ten Fiscal Years**

Fiscal Year Ended June 30th	Total Tax Levy for Fiscal Year	Collected within the Fiscal Year of the Levy		Collections in Subsequent Years	Total Collections to Date*		Percentage of Delinquencies
		Amount	Percentage of Levy		Amount	Percentage of Levy	
2004	\$ 14,911,332	\$ 14,943,191	100.21%	\$ 281,762	\$ 15,224,953	102.10%	-0.21%
2005	15,976,238	15,900,407	99.53%	208,969	16,109,376	100.83%	0.47%
2006	18,368,735	17,935,902	97.64%	366,878	18,302,780	99.64%	2.36%
2007	19,967,941	19,806,028	99.19%	220,890	20,026,918	100.30%	0.81%
2008	21,454,303	20,926,264	97.54%	56,389	20,982,653	97.80%	2.46%
2009	22,915,155	21,901,904	95.58%	887,073	22,788,977	99.45%	4.42%
2010	22,916,556	22,249,952	97.09%	942,450	23,192,402	101.20%	2.91%
2011	23,960,119	22,526,690	94.02%	1,003,845	23,530,535	98.21%	5.98%
2012	20,656,453	20,154,453	97.57%	203,657	20,358,110	98.56%	2.43%
2013	20,204,318	20,114,458	99.56%	718,962	20,833,420	103.11%	0.44%

Source: City of Missoula

* This includes all collections, current and delinquent

**CITY OF MISSOULA, MONTANA
GENERAL OBLIGATION DEBT RATIOS
REQUIRED CONTINUING DISCLOSURE**

The following general obligation debt ratios are provided as of June 30, 2012

Market Valuation	\$	4,110,699,383
Market Valuation (Less Tax Increment)	\$	4,106,168,447
Taxable Valuation	\$	112,409,928
Taxable Valuation (Less Tax Increment)	\$	108,167,019
Population		67,699
Direct Debt Per Capita	\$	186
Direct and Overlapping Debt Per Capita	\$	404
Direct Debt to Market Valuation		0.31%
Direct and Overlapping Debt to Market Valuation		0.67%
Direct Debt to Taxable Valuation		11.18%
Direct and Overlapping Debt to Taxable Valuation		24.35%
Market Valuation per Capita	\$	60,720
Taxable Valuation per Capita	\$	1,598

Source: City of Missoula

STATISTICAL SECTION

SUMMARY OF DIRECT DEBT, INDIRECT DEBT AND DEBT RATIOS REQUIRED CONTINUING DISCLOSURE AS OF JUNE 30, 2013

	Summary of Direct Debt		
	Gross Debt	Less: Debt Service Funds (a)	Net Direct Debt
General Obligation Debt Supported by Taxes	\$ 12,570,000	\$ -	\$ 12,570,000
Debt Supported by General Fund	5,285,000	-	5,285,000
Revenue Debt (Sewer)	23,600,000	(b)	23,600,000
Revenue Debt (TIF and Parking)	26,801,713	(c)	26,801,713
Subtotal of Direct Debt	<u>\$ 68,256,713</u>		<u>\$ 68,256,713</u>

- (a) Debt Service funds are as of June 30th. Includes money to pay both principal and interest.
(b) Monies are transferred from the Sewer Enterprise Fund to make the principal and interest payments on these bonds.
(c) Monies from the Missoula Parking Commission and tax increment revenues are used to make principal and interest payments on these bonds.

	Summary of Indirect Debt		
	G.O. Debt as of June 30, 2013	Debt Applicable to Tax Capacity of City	
		Percentage^	Amount
Taxing Unit:			
Missoula County High School District	\$ 9,670,000	57.60%	\$ 5,569,920
Hellgate Elementary School District	10,910,000	15.68%	1,710,221
School District No. 20 (Desmet)	215,000	0.50%	1,075
Missoula County	14,102,000	53.30%	7,516,366
Subtotal of Indirect Debt	<u>\$ 34,897,000</u>		<u>\$ 14,797,582</u>

Total of Direct and Indirect Debt \$ 83,054,295

	Debt Ratios*	
	G.O. Net Direct Debt	G.O. Indirect & Net Direct Debt
Current Year Estimated Value	0.31%	0.67%
Per Capita	\$ 186	\$ 404

*Includes general obligation debt and debt supported by general fund revenues, excludes revenue supported debt.

^The percentage of overlapping debt applicable is estimated using taxable assessed property values. Applicable percentages were estimated by determining the portion of the county's taxable assessed value that is within the government's boundaries and dividing it by the county's total taxable assessed value.

Source: City of Missoula
Source: Missoula County Assessors Office
Source: Local Schools

**CITY OF MISSOULA, MONTANA
LEGAL DEBT MARGIN INFORMATION
Last Ten Fiscal Years
(amounts expressed in thousands)**

	Fiscal Year									
	2004	2005	2006	2007	2008	2009	2010	2011	2012	2013
Debt Limit	\$ 42,362	\$ 43,815	\$ 48,253	\$ 84,236	\$ 85,308	\$ 93,949	\$ 93,949	\$ 99,129	\$ 103,517	\$ 102,767
Total net debt applicable to limit	<u>15,566</u>	<u>14,511</u>	<u>18,972</u>	<u>17,944</u>	<u>16,426</u>	<u>16,426</u>	<u>15,224</u>	<u>13,966</u>	<u>12,661</u>	<u>11,520</u>
Legal debt Margin	<u>\$ 26,796</u>	<u>\$ 29,304</u>	<u>\$ 29,281</u>	<u>\$ 66,292</u>	<u>\$ 68,882</u>	<u>\$ 77,523</u>	<u>\$ 78,725</u>	<u>\$ 85,163</u>	<u>\$ 90,856</u>	<u>\$ 91,247</u>
Total net debt applicable to the limit as a percentage of debt limit	<u>36.75%</u>	<u>33.12%</u>	<u>39.32%</u>	<u>21.30%</u>	<u>19.26%</u>	<u>17.48%</u>	<u>16.20%</u>	<u>14.09%</u>	<u>12.23%</u>	<u>11.21%</u>

Legal Debt Margin Calculation for Fiscal Year 2013

Assessed Value of Taxable Property as Ascertained by the last Assessment for Taxes	\$ 4,110,699
Debt Limit 2.5% of Assessed Value (1)	<u>2.50%</u>
General Obligation Debt Limit	102,767
Less: Outstanding General Obligation Debt, June 30, 2013	<u>11,520</u>
Total net debt applicable to limit	<u>91,247</u>
Legal Debt Margin	<u>\$ 91,247</u>

(1) Montana Statute (7-7-4201) prescribes a legal debt limit of 2.5% of the total assessed value of taxable property, which was increased in the FY 2007 legislature from 1.51%.

Source: City of Missoula
Source: Missoula County Assessors Office

**CITY OF MISSOULA, MONTANA
RATIO OF OUTSTANDING DEBT BY TYPE
Last Ten Fiscal Years**

Fiscal Year	Governmental Activities					Business-Type Activities		Total Personal		Debt as a Percentage of Personal		Debt as a Percentage of	
	General Obligation Bonds	Limited Obligation Bonds	Special Assessment Bonds	State Board of Investment Loans	Sidewalk and Curb Warrants	Revenue Bonds	Total Primary Government	Per capita Income*	Population	Income	Capita	Market Value	
2004	\$ 15,895,000	\$ 1,440,000	\$14,649,201	\$ 100,179	\$ 316,409	\$15,215,987	\$ 47,616,776	\$ 30,098	62,120	2.55%	767	1.81%	
2005	15,020,000	1,380,000	14,226,402	546,373	228,628	16,586,138	47,987,541	31,397	63,396	2.41%	757	1.71%	
2006	14,070,000	1,315,000	15,594,203	440,972	120,923	17,079,212	48,620,310	33,247	64,081	2.28%	759	1.68%	
2007	18,720,000	4,760,000	15,455,681	252,453	120,923	16,797,231	56,106,288	34,451	65,826	2.47%	852	1.76%	
2008	17,500,000	5,360,000	15,510,165	222,425	120,923	15,818,231	54,531,744	35,294	66,000	2.34%	826	1.62%	
2009	16,235,000	5,130,000	14,030,295	191,309	100,248	14,801,231	50,488,083	35,156	66,295	2.17%	762	1.34%	
2010	15,065,000	4,935,000	14,350,241	159,063	-	13,883,485	48,392,789	35,592	66,500	2.04%	728	1.29%	
2011	13,840,000	5,625,000	15,021,055	125,646	-	24,579,098	59,190,799	36,032	66,788	2.46%	886	1.58%	
2012	12,570,000	5,285,000	15,322,685	91,014	-	23,600,000	56,868,700	36,479	67,242	2.32%	846	1.37%	
2013	11,465,000	4,935,000	13,796,516	55,126	-	22,437,000	52,688,642	36,931	67,699	2.11%	778	1.28%	

Source: City of Missoula

Source: Missoula County Assessors Office

Source: Montana Department of Labor - Research and Analysis Bureau

*2010 is the most recent data available. Preceding years to 2001-2009 are City estimates.

CITY OF MISSOULA, MONTANA
RATIO OF ANNUAL DEBT SERVICE REQUIREMENTS FOR
Last Ten Fiscal Years
Amounts expressed in thousands, except population and per capita

Fiscal Year	General Obligation Bonds	Total Taxable Assessed Valuation	Percentage of Taxable Value of Property	Estimated Population	Per Capita
2004	\$ 15,895	\$ 82,076	19%	62,120	255.87
2005	15,020	84,586	18%	63,396	236.92
2006	14,070	91,358	15%	64,081	219.57
2007	18,720	93,534	20%	65,826	284.39
2008	17,500	99,333	18%	66,000	265.15
2009	16,235	103,000	16%	66,295	244.89
2010	15,065	104,408	14%	66,500	226.54
2011	13,840	106,229	13%	66,788	207.22
2012	12,570	107,879	12%	67,242	186.94
2013	11,465	108,167	11%	67,699	169.35

Source: City of Missoula

Source: Missoula County Assessors Office

Source: Bureau of Economic Analysis

**CITY OF MISSOULA, MONTANA
PLEDGED-REVENUE COVERAGE
WASTEWATER FACILITY REVENUE BONDS
Last Ten Fiscal Years**

Fiscal Year	Operating Revenues	Operating Expenses (1)	Net Revenue Available for Debt	Debt Service Requirements			
				Principal Paid	Interest Paid	Total Debt Service	Coverage (2)
2004	\$ 6,308,650	\$ 3,036,426	\$ 3,272,224	\$ 689,000	\$ 503,234	\$ 1,192,234	274%
2005	7,265,854	3,151,625	4,114,229	797,233	655,716	1,452,949	283%
2006	6,620,032	3,263,652	3,356,380	894,751	660,341	1,555,092	216%
2007	6,778,103	3,492,891	3,285,211	941,000	682,728	1,623,728	202%
2008	6,848,299	3,900,755	2,947,544	979,000	641,677	1,620,677	182%
2009	6,543,754	3,860,411	2,683,343	1,017,000	605,558	1,622,558	165%
2010	6,705,911	3,769,644	2,936,267	1,050,023	568,464	1,618,487	181%
2011 ^	6,678,968	3,876,659	2,802,309	1,511,485	721,218	2,232,703	126%
2012	7,375,912	4,701,243	2,674,669	979,098	876,018	1,855,116	144%
2013	7,838,369	5,069,308	2,769,061	1,186,000	711,146	1,897,146	146%

^ Debt Service Coverage Calculation - 2013	
	FY 2013
Revenues	
Operating Revenue	\$ 8,084,602
Less: Federal Credit	(246,233)
Total Operating Revenue	7,838,369
Expenses	
Operating Expenses	(7,823,788)
Add back Depreciation	2,754,480
Total Operating Expenses	(5,069,308)
Revenues Available for Debt Service:	\$ 2,769,061
Debt Service	
Principal	\$ 1,549,000
Interest	957,379
Less - Refunded Debt Principal	(363,000)
Less: Federal Credit	(246,233)
Net Debt Service	\$ 1,897,146
Coverage	146%

Source: City of Missoula Annual Financial Reports

(1) Does not include depreciation or bond interest.

(2) Net revenues divided by the maximum debt payment due in any future calendar year.

**CITY OF MISSOULA, MONTANA
REVOLVING FUND YEAR-END BALANCES
REQUIRED CONTINUING DISCLOSURE
Last Ten Fiscal Years**

Fiscal Year	Revolving Fund Cash Balance	Principal Amount of Bonds	Percentage
2004	\$ 955,785	\$ 14,357,629	6.7%
2005	808,460	14,226,402	5.7%
2006	889,718	15,594,203	5.7%
2007	954,148	15,455,681	6.2%
2008	779,966	15,510,165	5.0%
2009	719,399	14,030,295	5.1%
2010	746,320	14,250,241	5.2%
2011	794,547	15,021,055	5.3%
2012	774,812	15,322,685	5.1%
2013	719,735	14,189,516	5.1%

Source: City of Missoula

**CITY OF MISSOULA, MONTANA
REVOLVING FUND CHANGES IN FUND BALANCE
REQUIRED CONTINUING DISCLOSURE
Last Ten Years**

	Fiscal Year									
	2004	2005	2006	2007	2008	2009	2010	2011	2012	2013
Beginning Balance	\$ 778,049	\$ 955,785	\$ 808,460	\$ 889,718	\$ 954,148	\$ 779,966	\$ 719,399	\$ 764,101	\$ 794,547	\$ 791,209
Disbursements/Transfers	177,736	(147,325)	81,258	64,430	(174,182)	(60,567)	44,702	30,446	(3,338)	(55,943)
Ending Balance	<u>\$ 955,785</u>	<u>\$ 808,460</u>	<u>\$ 889,718</u>	<u>\$ 954,148</u>	<u>\$ 779,966</u>	<u>\$ 719,399</u>	<u>\$ 764,101</u>	<u>\$ 794,547</u>	<u>\$ 791,209</u>	<u>\$ 735,266</u>
Assets:										
Cash	\$ 852,799	\$ 808,460	\$ 885,738	\$ 928,632	\$ 776,343	\$ 702,257	\$ 746,320	\$ 793,639	\$ 774,812	\$ 719,735
Due from SID Funds	72,062	-	-	-	-	-	-	-	865	-
Other Receivables	320,488	227,828	218,910	222,281	184,856	182,844	167,952	135,548	134,640	119,108
Total Assets	1,245,349	1,036,288	1,104,648	1,150,913	961,200	885,101	914,272	929,187	910,317	838,843
Liabilities:										
Deferred Revenue	289,564	227,828	214,930	196,765	181,233	165,702	150,171	134,639	119,108	103,577
Total Liabilities	289,564	227,828	214,930	196,765	181,233	165,702	150,171	134,639	119,108	103,577
Total Fund Balance	<u>\$ 955,785</u>	<u>\$ 808,460</u>	<u>\$ 889,718</u>	<u>\$ 954,148</u>	<u>\$ 779,966</u>	<u>\$ 719,399</u>	<u>\$ 764,101</u>	<u>\$ 794,547</u>	<u>\$ 791,209</u>	<u>\$ 735,266</u>

Source: City of Missoula

**CITY OF MISSOULA, MONTANA
DEMOGRAPHIC AND ECONOMIC STATISTICS
Last Ten Fiscal Years**

Fiscal Year	Population		Income Statistics		State	Missoula County
	Estimated City Population (1)	County Population	Total Personal Income (2)	Per Capita Income (2)	Unemployment Rate	Unemployment Rate
2004	62,120	100,891	\$ 3,032,540	\$ 30,098	4.3%	4.0%
2005	63,396	102,118	3,204,473	31,397	4.0%	3.7%
2006	64,081	104,145	3,460,865	33,247	3.5%	3.3%
2007	65,826	105,911	3,646,623	34,451	2.5%	2.3%
2008	66,000	107,565	3,795,962	35,294	4.1%	4.1%
2009	66,295	108,000	3,818,772	35,156	5.3%	5.1%
2010	66,500	108,500	3,866,079	35,592	6.6%	6.3%
2011	66,788	109,299 *	3,913,971 *	36,032 *	6.9%	6.8%
2012	67,242	110,042 *	3,962,457 *	36,479 *	6.5%	6.4%
2013	67,699	110,791 *	4,011,544 *	36,931 *	5.5%	5.7%

(1) 2000 and 2010 population is from the US Census Bureau. All other years are estimated.

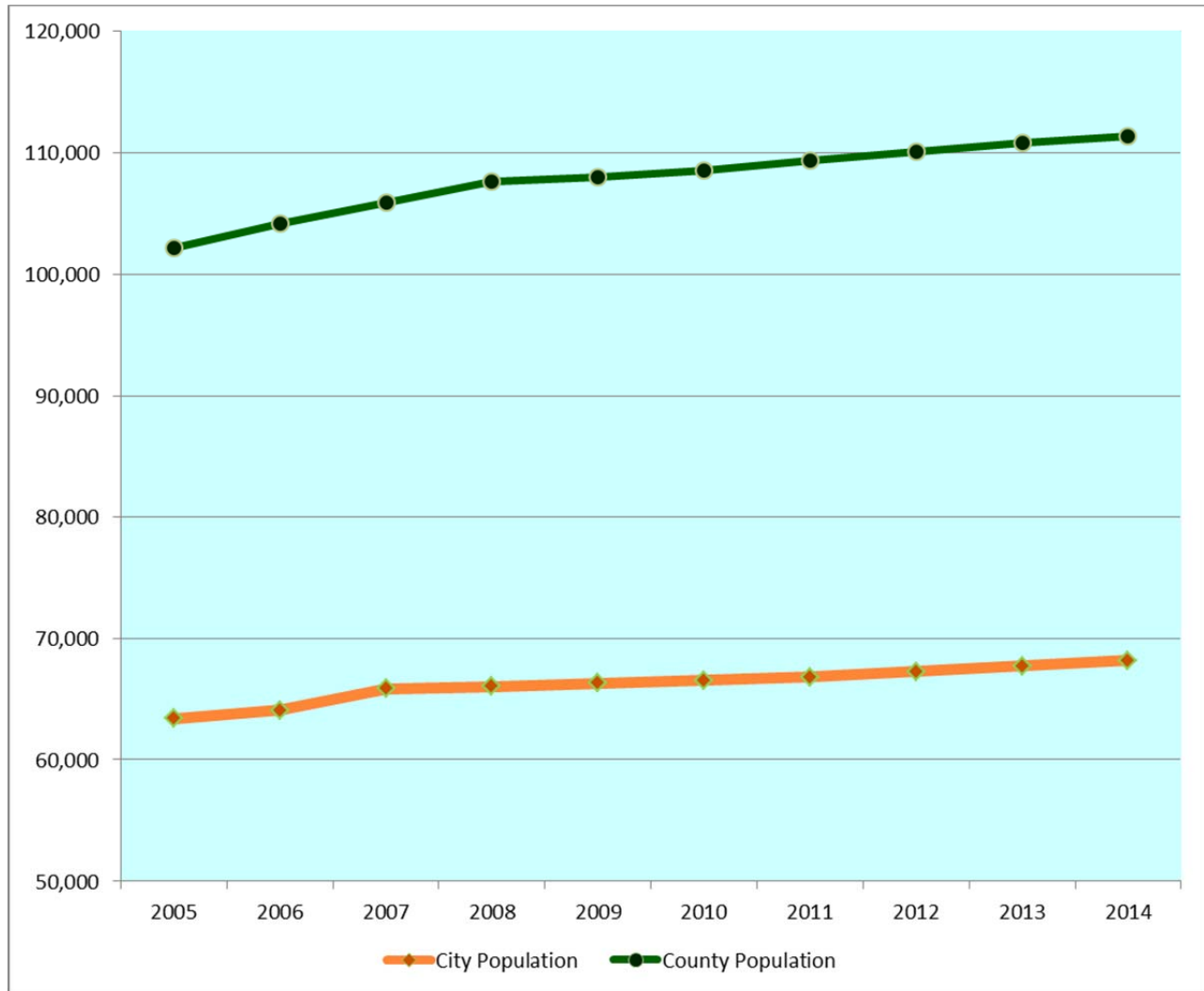
(2) Only Missoula County information available.

* Estimate based on average increase of prior years.

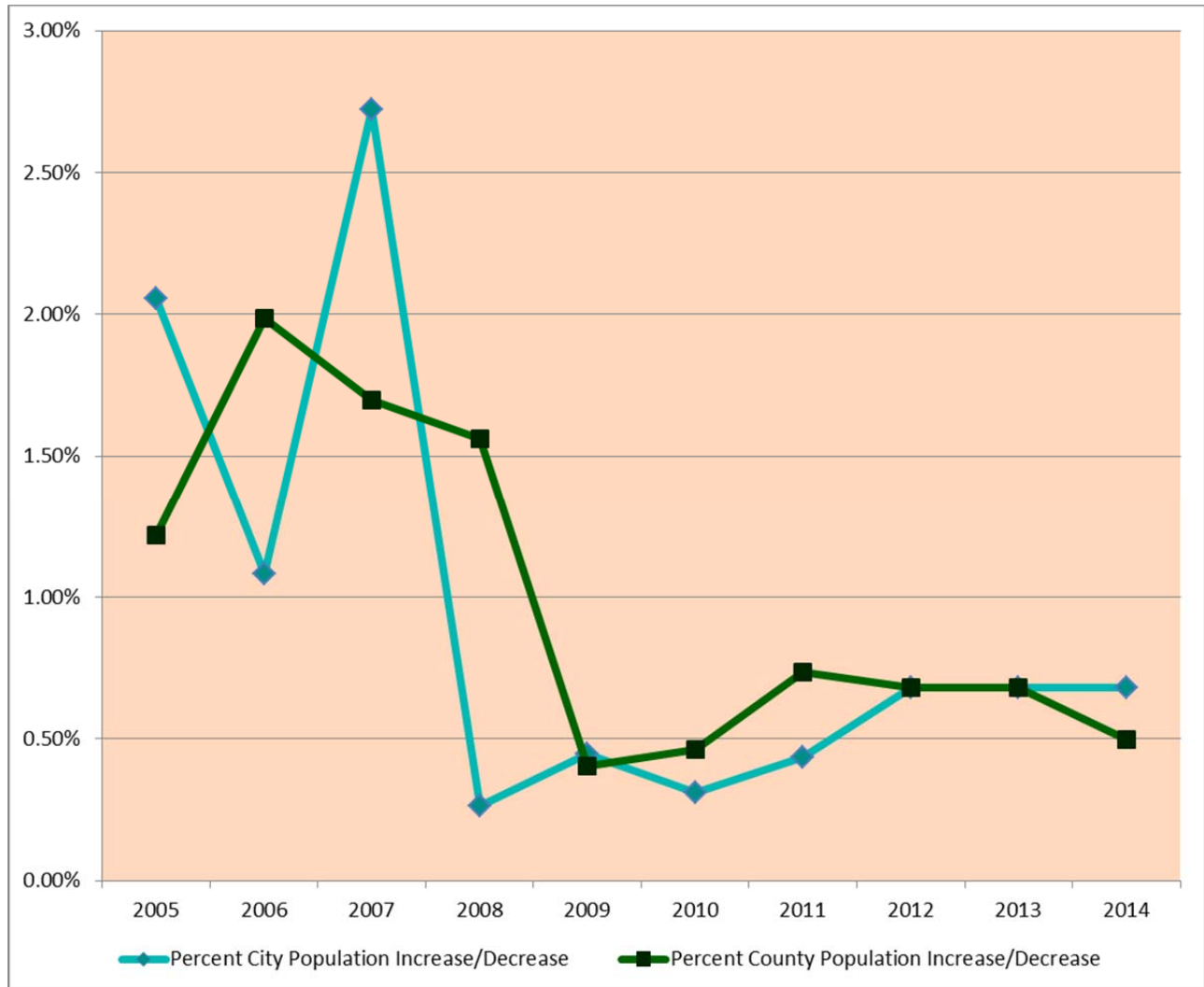
Source - Bureau of Economic Analysis and Department of Labor & Industry, Research & Analysis Bureau

N/A - Not available

County and City of Missoula Population per year



County and City of Missoula Percent increase in population per year



STATISTICAL SECTION

City of Missoula Climate Demographics Last 30 years

Temperature	Missoula (1893-2003)	Kalispell (1899-2003)	Butte (1894-2003)	State of Montana	State of Idaho
Latest 30 Year Normal Temperature (1971-2000)	44.8	42.6	39.5	-	-
Average Temperature (Jan-Dec)	44.3	43.1	39.9	-	-
Lowest Temperature	-33 (1/26/57)	-38 (1/30/50 - 1/31/50)	-52 (2/9/33)	-70 Rogers Pass (1/20/54)	-60 Island Park Dam (1/18/43)
Highest Temperature	107 (7/6/2007)	105 (8/4/61)	100 (7/22/31)	117 Medicine Lake (7/5/37)	118 Orofino (7/28/34)

Precipitation	Missoula (1893-2003)	Kalispell (1899-2003)	Butte (1894-2003)	State of Montana	State of Idaho
Latest 30 Year Normal Precipitation (1971-2000)	13.84	17.21	12.78	-	-
Average Precipitation (Jan-Dec)	13.65	16.22	12.97	-	-
Driest Month	Trace August 1967	Trace August 1955	Trace October 1987	-	-
Driest Year	8.16 1931	10.42 1944	6.89 1935	-	-
Greatest 24-hour Precipitation	2.32 inches (11/5/1927)	2.71 inches (6/29/1982)	3.00 inches (06/09/1913)	-	-
Wettest Month	7.38 inches May 1980	6.02 inches July 1983	8.86 inches June 1913	-	-
Wettest Year	21.92 inches 1998	25.23 inches 1996	20.55 inches 1909	-	-
Annual Average Snowfall	44 inches	58.3 inches	61.3 inches	-	-
Greatest 24-hour Snow	27.5 inches (11/30/1893)	20.1 inches (12/27/1911)	30.0 inches (10/10/1911)	-	-
Greatest Monthly Snow	54.1 inches December 1996	55.9 inches December 1936	32.5 inches October 1911	-	-
Greatest Annual Snowfall	106.1 inches 1996	148.8 inches 1996	125.5 inches 1996	-	-
Greatest Snow Depth	27.0 inches (12/29/1996)	61.0 inches (12/30/1996)	27.0 inches (12/29/1996)	-	-

Source: National Weather Service Forecast Office, Missoula, MT

**CITY OF MISSOULA, MONTANA
TOP EMPLOYERS IN CITY OF MISSOULA
Current and Ten Years Ago**

Employer	Type of Product or Service	2013	Percentage of Total City Employment	2004	Percentage of Total City Employment
University of Montana	Higher Education	3,122	4.61%	2795	4.50%
St. Patrick Hospital	Healthcare	1,698	2.51%	1450	2.33%
Community Medical Center	Healthcare	1,174	1.73%	1243	2.00%
Missoula County Public Schools	Public Education	1,165	1.72%	1481	2.38%
DirecTV Customer Service	Service	850	1.26%	*	*
Missoula County	County Government	810	1.20%	700	1.13%
Us Forrest Service	Federal Government	745	1.10%	400	0.64%
Wal-Mart	Retail	585	0.86%		*
Opportunity Resources	Service	533	0.79%		*
City of Missoula	City Government	521	0.77%	516	0.83%
Western Montana Clinic	Healthcare			544	0.88%
Smurfit-Stone Container Company	Wood Products			510	0.82%
Stimpson Lumber Company	Wood Products			425	0.68%

* Employers were added after 2004

Source - Bureau of Economic Analysis and Department of Labor & Industry, Research & Analysis Bureau

**CITY OF MISSOULA, MONTANA
CITY SERVICES AND EMPLOYMENT**

<u>Bargaining Unit</u>	<u>Number of Members</u>	<u>Date of Expired Contract</u>
International Association of Firefighters, Local No. 271	86	June 30, 2015
Missoula Police Protective Association	94	June 30, 2015
Montana Public Employees Association		
Maintenance Technicians in Parks and Recreation Dept	9	June 30, 2014
Wastewater Lab Techs	2	June 30, 2015
Parking Commission	7	June 30, 2014
Teamsters Union, Local No. 2	20	June 30, 2015
Operators' Union, Local No. 4000	10	June 30, 2015
Machinists Union, Local No. 88, District No. 86	8	June 30, 2015
Teamsters, Parks and Recreation Seasonal	18	June 30, 2014
Wastewater Operator's Union, Local 400	14	June 30, 2015
International Brotherhood of Electrical Workers	2	June 30, 2015
International Brotherhood of Electrical Workers (Building)	5	June 30, 2015

Note: Basic Services provided through City government include Police and Fire protection, Municipal Sewer and Sanitation, street Maintenance and Construction, Building Inspection, Zoning Enforcement, Public Works, and Parks and Recreation. As of June 30, 2008, the City employed approximately 639 workers, including Seasonal and Intermittent. Of the total City workforce, approximately 40% were members of organized bargaining units. State law requires Montana Cities to bargain collectively with formally recognized bargaining units. The City considers relations with its bargaining groups to be satisfactory.

Source: City of Missoula

**MISSOULA, MONTANA METROPOLITAN AREA
EMPLOYMENT BY MAJOR INDUSTRY TYPE
ANNUAL AVERAGE
Last Ten Fiscal Years**

	<u>2013 (A)</u>	<u>2012</u>	<u>2011</u>	<u>2010</u>	<u>2009</u>	<u>2008</u>	<u>2007</u>	<u>2006</u>	<u>2005</u>	<u>2004</u>
Goods Producing	4,100	4,400	4,700	4,600	5,500	6,100	6,200	6,200	6,200	6,200
Trade, Transportation and Utilities	11,000	11,600	11,400	11,300	12,100	12,900	12,900	12,800	12,600	12,500
Professional and Business Service	6,800	6,800	6,900	6,900	6,100	6,200	5,900	5,200	5,000	4,900
Educational and Health Services	10,000	9,800	9,500	9,200	8,900	8,700	8,300	8,300	8,200	8,000
Healthcare and Social Assistance	9,300	9,200	9,000	8,700	8,400	8,200	7,900	7,900	7,800	7,600
Leisure and Hospitality	7,000	7,400	6,900	7,000	7,600	7,900	7,600	7,100	6,900	6,800
Government	10,600	10,300	8,400	10,300	8,300	9,300	10,400	10,600	10,200	10,100
	<u>58,800</u>	<u>59,500</u>	<u>56,800</u>	<u>58,000</u>	<u>56,900</u>	<u>59,300</u>	<u>59,200</u>	<u>58,100</u>	<u>56,900</u>	<u>56,100</u>

Source: Department of Labor & Industry, Research & Analysis Bureau

(A) Most recent data available through May 2013.
All other years are annual data

STATISTICAL SECTION

CITY OF MISSOULA, MONTANA OPERATING INDICATORS BY FUNCTION/PROGRAM Last Ten Fiscal Years

Function/Program	2004	2005	2006	2007	2008	2009	2010	2011	2012	2013
General Government										
Business Licenses Issued	7,907	4,484	5,173	5,290	6,386	5,141	5,947	5,103	5,872	5,585
Amount of SID's Billed	\$ 2,275,546	\$ 2,241,307	\$ 2,748,200	\$ 2,793,604	\$ 2,802,979	\$ 2,781,168	\$ 2,979,149	\$ 2,979,149	\$ 2,806,974	\$ 2,565,463
# Sewer Bills	35,448	36,641	38,728	41,002	41,818	42,323	42,860	43,493	44,495	45,042
Public Safety Activities										
Citations issued	25,136	31,008	33,262	38,468	32,219	31,700	25,136	20,232	20,554	18,139
Orders of Protection issued	298	586	604	417	400	398	277	209	236	203
Attorney's Office - Lawsuits & Claims	51	53	51	47	49	41	26	24	22	32
Attorney - Opened criminal files	2,476	2,179	4,235	3,181	2,708	2,372	2,313	3,029	4,007	4,260
Officers/1,000 population	1	2	2	2	2	2	2	1	2	2
Total sworn officers	88	96	100	102	101	101	100	100	104	106
Police calls for Service	37,398	37,494	43,778	40,515	40,981	41,424	41,373	40,272	41,334	42,302
Total Fire Department Incident Responses*	4,729	4,701	5,259	5,497	5,805	5,850	6,217	5,752	6,131	6,548
Public Works										
Miles of sidewalk installed	17.45	24.74	9.34	9.19	7.00	4.00	6.78	5.42	4.72	5.58
Building Permits Issued	1,677	1,494	1,613	1,613	1,530	1,291	1,306	1,283	1,395	1,485
Construction Value of Bldg permits issued	\$ 113,217,490	\$ 99,855,627	\$ 89,139,379	\$ 89,139,379	\$ 133,165,009	\$ 63,987,567	\$ 54,867,213	\$ 87,790,572	\$ 58,443,007	\$ 68,558,394
Miles of Street - per State Gas Tax Report	349	359	359	338	312	383	391	413	416	419
Population	62,120	63,396	64,081	65,826	66,000	66,295	66,500	66,788	67,242	67,699

Source: City of Missoula

* Fire Department Incident Responses are based on Calendar Years. Current Year number through 12/31/12.

STATISTICAL SECTION

CITY OF MISSOULA, MONTANA CAPITAL ASSET STATISTICS BY FUNCTION/PROGRAM Last Seven Fiscal Years

Function	Fiscal Year						
	2013	2012	2011	2010	2009	2008	2007
GENERAL GOVERNMENT							
Vehicles	2	2	4	4	4	7	5
Buildings	4	4	3	3	3	3	2
PUBLIC SAFETY ACTIVITIES							
Fire Stations	5	5	5	5	5	5	5
Fire Engines/Trucks/Vehicles/Vans	32	31	25	25	26	26	27
Police Motorcycles	5	4	6	6	6	6	6
Police Patrol Cars/Passenger Vehicles/Other Vehicles	59	66	63	63	62	58	47
PUBLIC WORKS							
Streets (sq. yards)	7,539,539	7,399,746	7,265,469	7,056,869	6,837,927	6,826,850	6,761,248
Curbs (lineal feet)	2,182,153	2,159,796	2,135,361	2,100,819	1,957,574	1,997,728	1,957,574
Sidewalks (sq. feet)	13,345,978	12,824,406	12,699,836	10,599,017	10,232,017	10,015,638	9,830,923
Storm Sewer (lineal feet)	179,388	172,360	168,148	162,158	157,826	153,275	153,275
Sumps	4,183	5,524	5,496	5,385	5,307	5,307	5,160
Signs	60,103	59,236	58,369	57,502	56,635	53,768	54,901
Vehicles	123	163	165	163	161	107	98
Buildings	5	4	4	4	4	4	7
PUBLIC HEALTH ACTIVITIES							
Cemetery & Buildings	7	7	7	7	7	7	7
Vehicles/Tractors/Trucks/Mowers	18	17	15	14	14	16	17
CULTURE AND RECREATION							
Parks	70	70	69	68	67	51	46
Trails					22	20	18
Commuter	23	23	22	22	N/A	N/A	N/A
Recreational	56	56	55	55	N/A	N/A	N/A
Park Shelter/Band Shells/Pavilions	18	17	15	12	10	10	10
Buildings	23	23	23	23	23	23	20
Vehicles (Including trailers)	108	59	59	59	58	55	57
HOUSING & COMMUNITY DEVELOPMENT							
Vehicles	1	1	1	1	1	10	10
Buildings	-	-	-	-	-	2	2

Capital Asset Statistics by Function information prior to 2006 is not readily available in this format.

Source: City of Missoula Fixed Asset Accounting Module
Source: Various City of Missoula Departments

**CITY OF MISSOULA, MONTANA
SPECIAL ASSESSMENTS BILLED AND COLLECTED
Last Ten Fiscal Years**

Fiscal Year	Assessments Billed	Current Assessments Paid	Percent Collected	Delinquent Assessments Paid	Total Assessments Paid	Penalty and Interest Paid
2004	\$ 2,275,546	\$ 2,105,570	92.53%	\$ 94,509	\$ 2,200,079	\$ 14,225
2005	2,241,307	2,132,336	95.14%	425,988	2,558,324	16,314
2006	2,748,200	2,638,272	96.00%	246,280	2,884,552	10,996
2007	2,793,604	3,695,269	132.28%	106,930	3,802,199	11,629
2008	2,802,979	2,690,299	95.98%	107,817	2,798,116	11,653
2009	2,781,168	2,666,875	95.89%	109,340	2,776,215	11,539
2010	2,979,149	2,796,909	93.88%	136,607	2,933,516	14,999
2011	2,979,149	2,818,935	94.62%	159,941	2,978,876	18,139
2012	2,806,974	2,760,131	98.33%	160,377	2,920,508	16,070
2013	2,565,463	2,549,864	99.39%	51,388	2,601,252	8,058

Note: Property tax levies are set in August at the time the City budget is approved and billed November 1 by the County. Half of the taxes are due by November 30 and the other half by May 31. After those dates, the bills are delinquent (and a lien is placed on the property). The interest charged on delinquent taxes is one percent per month, with a two percent penalty.

Source: City of Missoula

STATISTICAL SECTION

**CITY OF MISSOULA, MONTANA
SPECIAL IMPROVEMENT DISTRICT 512, 521 AND 522
REQUIRED CONTINUING DISCLOSURE**

Fiscal Year	Combined Market Value of All Districts	Average Ratio of Market Value to Assessments of Individual Parcels	Highest Ratio of Market Value to Assessments of Individual Parcels	Lowest Ratio of Market Value to Assessments of Individual Parcels	Median Ratio of Market Value to Assessments of Individual Parcels
2004	\$ 158,065,283	\$ 89.06	\$ 1,154.30	\$ 6.30	\$ 79.15
2005	166,871,500	95.60	2,692.30	2.07	117.52
2006	158,701,080	757.82	10,797.00	5.82	221.17
2007	191,613,295	1,219.98	13,841.43	6.35	221.37
2008	211,405,977	317.09	4,977.27	5.04	141.94
2009	234,349,048	954.97	6,111.87	20.47	160.49
2010	236,039,170	1,071.95	30,710.27	22.07	247.40
2011	215,320,296	1,296.29	51,474.37	40.46	823.26
2012	296,665,021	1,601.54	60,391.92	47.21	957.42
2013	343,496,868	817.76	40,261.28	47.92	433.47

Source: City of Missoula and Missoula County Assessor's Office

STATISTICAL SECTION

CITY OF MISSOULA, MONTANA SPECIAL IMPROVEMENT DISTRICTS Current as of June 30, 2013

SID Number	Combined Market Value of All Districts	Average Ratio of Market Value to Assessments of Individual Parcels	Highest Ratio of Market Value to Assessments of Individual Parcels	Lowest Ratio of Market Value to Assessments of Individual Parcels	Median Ratio of Market Value to Assessments of Individual Parcels
FY11 Total ^	\$ 2,698,949,941	\$ 1,042.61	\$ 42,350.68	\$ 0.03	\$ 341.14
FY12 Total ^	\$ 3,105,150,944	\$ 893.51	\$ 26,719.49	\$ 1.76	\$ 429.81
0508	3,424,049	110.99	527.11	10.36	26.28
0510	29,236,770	423.29	4,290.59	1.82	210.25
0511	14,946,066	35.42	195.21	3.11	21.44
512/521/522	343,496,868	817.76	40,261.28	47.92	433.47
0520	160,628,685	74.37	11,200.24	10.13	58.30
0524	880,271,878	194.25	12,117.08	2.99	110.41
0525	35,220	51.75	253.47	6.44	29.03
0526	140,750,098	57.45	879.59	0.74	31.82
0530	10,732,348	1,360.03	10,611.06	729.07	1,064.84
0531	14,495,427	349.08	1,360.03	175.44	272.33
0532	78,994,531	115.38	346.00	68.62	113.05
0533	13,480,435	44.29	338.42	1.79	26.74
0534	15,631,241	40.30	69.13	22.19	41.01
0535	62,911,878	878.03	5,891.83	278.93	817.57
0536	26,496,829	38.92	102.05	21.71	36.09
0539	8,268,286	316.56	921.78	132.45	259.90
0540	115,995,172	63.72	118.37	12.44	62.59
0541	567,578,895	563.38	37,233.65	2.33	421.60
0543	98,186,866	650.26	1,617.08	29.98	601.74
0544	93,556,091	47.39	139.17	2.16	47.74
0545	15,176,397	450.55	1,415.20	137.89	400.95
0546	12,659,776	530.99	805.65	284.98	527.32
0548	3,773,425	12.96	21.99	0.14	13.54
CS08	29,321,049	105.97	1,023.41	5.89	70.44
CS09	23,476,616	40.50	216.61	0.98	28.19
CS10	36,572,889	49.77	950.22	2.04	26.18
CS12	51,034,315	205.53	3,892.44	9.98	83.45
CS13	60,036,577	633.42	10,016.98	6.76	221.12
CS341	45,062,421	226.14	4,995.82	0.75	98.41
CS342	103,471,838	404.72	5,258.01	1.50	145.05
CS343	52,652,053	167.92	1,756.56	1.09	85.46
CS344	93,715,915	139.90	1,001.42	2.52	97.14
CS345	83,503,927	167.43	1,197.52	7.93	112.75
CS346	37,241,880	108.13	623.36	5.31	42.06
FY13 Total ^	\$ 3,326,816,711	\$ 9,476.55	\$ 161,648.33	\$ 2,028.38	\$ 6,638.26

Source: City of Missoula and Missoula County Assessor's Office

^ First year to disclose information for all City SID's is FY 2011

STATISTICAL SECTION

CITY OF MISSOULA, MONTANA
MISSOULA PARKING COMMISSION RATES AND FEES
Last Ten Fiscal Years

Fiscal Year	On-Street Hourly Parking	Garage Hourly Parking	Parking Garage Lease Space Range	Off-Street Lease Space Range	Average Off-Street and Garage Lease Rate
2004	\$ 0.50	\$ 0.25	\$ 55.00 TO 65.00	\$ 30.00 TO 50.00	\$ 44.00
2005	0.50	0.25	55.00 TO 65.00	30.00 TO 50.00	44.00
2006	0.50	0.25	55.00 TO 65.00	30.00 TO 50.00	44.00
2007	0.50	0.25	55.00 TO 65.00	30.00 TO 50.00	45.00
2008	0.50	0.25	55.00 TO 65.00	30.00 TO 50.00	45.00
2009	0.50	0.25	55.00 TO 65.00	30.00 TO 50.00	45.00
2010	0.50	0.25	55.00 TO 65.00	30.00 TO 50.00	45.00
2011	0.50	1.00	65.00 TO 75.00	35.00 TO 55.00	49.00
2012	0.50	1.00	65.00 TO 75.00	30.00 TO 55.00	51.00
2013	0.50	1.00	65.00 TO 75.00	30.00 TO 55.00	51.00

Source: Missoula Parking Commission

**CITY OF MISSOULA, MONTANA
MISSOULA PARKING COMMISSION OPERATIONS AND FACILITIES
Last Ten Fiscal Years**

Fiscal Year	Parking Meters	Leased Parking Spaces	Parking Lots Throughout Downtown Missoula	Leased Parking Garage Spaces	University District Parking Permits	Percentage of Parking Ticket Revenue	Percentage of Parking Meter Revenue	Percentage of Garage Parking Revenue	Percentage of Leased Parking Revenue other than Parking Garage	Percentage of Other Revenue
2004	1,064	829	13	259	1,097	20%	32%	18%	24%	6%
2005	1,161	816	13	257	1,145	17%	36%	20%	23%	3%
2006	1,075	801	13	257	1,124	20%	34%	14%	28%	5%
2007	1,075	801	13	257	1,124	20%	34%	14%	27%	4%
2008	1,075	801	13	257	1,592	18%	31%	16%	21%	14%
2009	1,129	800	12	257	1,011	19%	35%	16%	21%	10%
2010	1,061	800	12	257	1,166	18%	37%	18%	23%	4%
2011	1,061	800	12	257	1,198	18%	37%	18%	23%	4%
2012	1,015	855	12	257	1,012	17%	38%	14%	29%	3%
2013	1,015	890	12	460	1,025	20%	34%	16%	24%	6%

Source: Missoula Parking Commission

STATISTICAL SECTION

CITY OF MISSOULA, MONTANA COMPONENT UNIT REVENUE BOND COVERAGE PARKING COMMISSION REVENUE BONDS

FISCAL YEAR	OPERATING REVENUES	SID 470 REVENUES	OPERATING EXPENSES (A)	NET AVAILABLE FOR DEBT SERVICE	PRINCIPAL PAID	INTEREST PAID	TOTAL DEBT SERVICE	COVERAGE (B)
2004	\$1,407,378	\$ 2,838	\$ 964,510	\$ 445,706	\$ 85,000	\$ 74,950	\$ 159,950	2.79
2005	1,369,511	1,450	864,335	506,626	90,000	70,990	160,990	3.15
2006	1,474,651	-	855,051	619,600	95,000	66,230	161,230	3.84
2007	1,391,368	-	903,019	488,349	100,000	63,237	163,237	2.99
2008	1,429,972	-	1,008,437	421,535	105,000	58,345	163,345	2.58
2009	1,448,179	-	1,013,313	434,866	110,000	53,162	163,162	2.67
2010	1,415,863	-	1,026,254	389,609	115,000	46,778	161,778	2.41
2011	1,443,085	-	947,789	495,296	120,000	(86,268)	33,732	14.68
2012	1,739,234	-	876,485	862,749	220,000	384,813	604,813	1.43
2013 *	1,838,073	-	972,402	865,671	210,000	302,292	512,292	1.69

* Debt Service Coverage Calculation - 2013	
	FY 2013
Revenues	
Total Operating Revenue	\$ 1,569,651
MRA Pledge	<u>268,422</u>
Total Revenues Pledged	1,838,073
Expenses	
Operating Expenses	(1,128,206)
Add back Depreciation ^	
Add back PILOT-Admin Chg	<u>155,804</u>
Total Operating Expenses	(972,402)
Revenues Available for Debt Service	<u>\$ 865,671</u>
Debt Service	
Principal	\$ 210,000
Interest	542,023
Less: Federal Credit	<u>(239,731)</u>
Net Debt Service	<u>\$ 512,292</u>
Coverage	1.69

(A) Does not include depreciation or bond interest.

(B) Net available divided by debt service.

^ Depreciation not available at time of Budget Publication

Source: City of Missoula Annual Reports

**CITY OF MISSOULA, MONTANA
COMPONENT UNIT MISSOULA REDEVELOPMENT AGENCY
HISTORICAL VALUE OF TAX INCREMENT DISTRICTS
For the Last Ten Fiscal Years**

Urban Renewal District II			
Fiscal Year	Personal Attached Taxable Value	Personal Property (Unattached) Taxable Value	Total Taxable Value
2004	\$ 2,243,639	\$ 128,090	2,371,729
2005	2,377,104	190,777	2,567,881
2006	2,444,439	197,268	2,641,707
2007	2,660,473	311,261	2,971,734
2008	2,718,817	342,487	3,061,304
2009	3,162,083	358,422	3,520,505
2010	3,302,146	318,269	3,620,415
2011	3,415,110	336,897	3,752,007
2012	3,371,473	309,233	3,680,706
2013	3,379,411	262,535	3,641,946

Urban Renewal District III			
Fiscal Year	Real Property & Personal Attached Taxable Value	Personal Property (Unattached) Taxable Value	Total Taxable Value
2004	\$ 6,739,549	\$ 469,329	7,208,878
2005	6,809,431	621,899	7,431,330
2006	6,991,926	677,495	7,669,421
2007	7,111,962	586,632	7,698,594
2008	7,306,424	406,379	7,712,803
2009	8,468,861	468,589	8,937,450
2010	9,027,375	514,481	9,541,856
2011	8,939,540	568,590	9,508,130
2012	9,118,547	552,532	9,671,079
2013	8,797,853	381,195	9,179,048

Front Street URD			
Fiscal Year	Real Property & Personal Attached Taxable Value	Personal Property (Unattached) Taxable Value	Total Taxable Value
2009 *	\$ 1,362,450	\$ 51,225	\$ 1,413,675
2010	1,571,488	50,604	1,622,092
2011	2,105,933	124,059	2,229,992
2012	1,908,040	121,154	2,029,194
2013	1,903,163	83,983	1,987,146

Riverfront Triangle URD			
Fiscal Year	Real Property & Personal Attached Taxable Value	Personal Property (Unattached) Taxable Value	Total Taxable Value
2010 ^	\$ 1,571,488	\$ -	\$ 1,571,488
2011	153,701	36,236	189,937
2012	132,286	36,579	168,865
2013	112,584	279	112,863

* First year data available as district was created in FY 2009

^ First year data available as district was created in FY 2010

Source: City of Missoula and Missoula County Assessor's Office

STATISTICAL SECTION

CITY OF MISSOULA, MONTANA COMPONENT UNIT MISSOULA REDEVELOPMENT AGENCY TAXABLE VALUE OF DISTRICTS COMPARED TO CITY For the Last Ten Fiscal Years

Urban Renewal District II				
Fiscal Year	Total City Taxable Value	Total Taxable Value Within Tax Increment District	Incremental Taxable Value Within Tax Increment District	Tax Increment as Percentage of City's Taxable Value
2005	\$ 91,358,406	\$ 2,567,881	\$ 708,058	0.8%
2006	93,533,579	2,641,707	781,884	0.8%
2007	99,332,558	2,971,734	1,111,911	1.1%
2008	103,000,436	3,061,304	1,201,481	1.2%
2009	106,334,891	3,520,504	1,392,741	1.3%
2010	107,159,214	3,620,415	1,760,592	1.6%
2011	111,474,037	3,752,007	1,892,184	1.7%
2012	112,993,774	3,680,706	1,820,883	1.6%
2013	112,697,955	3,641,946	1,782,123	1.6%
2014	109,336,360	3,686,503	1,859,823	1.7%

Urban Renewal District III				
Fiscal Year	Total City Taxable Value	Total Taxable Value Within Tax Increment District	Incremental Taxable Value Within Tax Increment District	Tax Increment as Percentage of City's Taxable Value
2005	\$ 91,358,406	\$ 7,431,330	\$ 426,984	0.5%
2006	93,533,579	7,669,421	665,075	0.7%
2007	99,332,558	7,698,594	694,248	0.7%
2008	103,000,436	7,712,803	708,457	0.7%
2009	106,334,891	8,937,450	1,933,104	1.8%
2010	107,159,214	9,541,856	2,537,510	2.4%
2011	111,474,037	9,508,130	2,503,784	2.2%
2012	112,993,774	9,671,079	2,666,733	2.4%
2013	112,697,955	9,179,048	2,174,702	1.9%
2014	109,336,360	9,358,441	2,355,095	2.2%

Front Street URD				
Fiscal Year	Total City Taxable Value	Total Taxable Value Within Tax Increment District	Incremental Taxable Value Within Tax Increment District	Tax Increment as Percentage of City's Taxable Value
2009 *	\$ 106,334,891	\$ 1,413,675	\$ 640	0.0%
2010	107,159,214	1,622,092	209,057	0.2%
2011	111,474,037	2,229,992	816,957	0.7%
2012	112,993,774	2,029,197	616,159	0.5%
2013	112,697,955	1,987,146	574,111	0.5%
2014	109,336,360	1,964,237	551,202	0.5%

Riverfront Triangle				
Fiscal Year	Total City Taxable Value	Total Taxable Value Within Tax Increment District	Incremental Taxable Value Within Tax Increment District	Tax Increment as Percentage of City's Taxable Value
2010 ^	\$ 104,408,018	\$ 133,871	\$ -	0.0%
2011	111,474,037	189,937	32,079	0.0%
2012	112,993,774	168,865	11,007	0.0%
2013	112,697,955	112,863	-	0.0%
2014	109,336,360	116,994	-	0.0%

* First year data available as district was created in FY 2009

^ First year data available as district was created in FY 2010

Source: City of Missoula and Missoula County Assessor's Office

**CITY OF MISSOULA, MONTANA
COMPONENT UNIT MISSOULA REDEVELOPMENT AGENCY
TRENDS IN PROPERTY VALUATION IN CITY
For the Last Ten Fiscal Years**

Fiscal Year	City Appraised Value	City Taxable Value (includes district)	Incremental Taxable Value District I	Incremental Taxable Value District II	Incremental Taxable Value District III	Incremental Taxable Value Front Street URD	Incremental Taxable Value Riverfront	Net Taxable Value (excluding districts)
2005	\$ 2,805,424,077	\$ 91,358,406	\$ 2,709,824	\$ 708,058	\$ 426,984	\$ -	\$ -	\$ 87,513,540
2006	2,901,638,641	94,980,538	not applicable	781,884	665,075	-	-	93,533,579
2007	3,195,587,513	101,138,717	not applicable	1,111,911	694,248	-	-	99,332,558
2008	3,369,424,008	103,000,436	not applicable	1,201,481	708,457	-	-	101,090,498
2009	3,412,313,560	106,334,891	not applicable	1,392,741	1,933,104	640	-	103,008,406
2010	3,684,720,974	107,159,214	not applicable	1,760,592	2,537,510	209,057	-	102,652,055
2011	3,965,146,053	111,474,037	not applicable	1,892,184	2,503,784	816,957	32,079	106,229,033
2012	4,140,685,284	112,993,774	not applicable	1,820,883	2,666,733	616,159	11,007	107,878,992
2013	4,110,699,383	112,697,955	not applicable	1,782,123	2,174,702	574,111	-	108,167,019
2014	4,305,020,382	114,068,797	not applicable	1,826,140	2,355,095	551,202	-	109,336,360

Source: City of Missoula and Missoula County Assessor's Office

**CITY OF MISSOULA, MONTANA
MISSOULA REDEVELOPMENT AGENCY
COMPONENT UNIT TAX INCREMENT REVENUE BOND COVERAGE
URD II: MILLSITE \$3.6M BONDS**

FISCAL YEAR	PROJECTED PLEDGED TAX INCREMENT	MAXIMUM PROJECTED DEBT SERVICE	COVERAGE
2007			
With State Entitlement	\$ 1,033,421	\$ 250,500	413%
Without State Entitlement	749,799	250,500	299%
2008			
With State Entitlement	1,129,477	250,500	451%
Without State Entitlement	845,855	250,500	338%
2009			
With State Entitlement	1,302,970	250,400	520%
Without State Entitlement	1,019,348	250,400	407%
2010			
With State Entitlement	1,369,859	250,400	547%
Without State Entitlement	1,113,237	250,400	445%
2011			
With State Entitlement	1,493,995	250,400	597%
Without State Entitlement	1,210,373	250,400	483%
2012			
With State Entitlement	1,429,000 A	500,400 B	286%
Without State Entitlement	1,173,740	500,400	235%
2013			
With State Entitlement	1,474,944 C	250,400	589%
Without State Entitlement	1,157,656	500,400	231%
2014			
With State Entitlement	1,522,881	676,428 D	225%
Without State Entitlement	1,208,093	500,400	241%

A State Entitlement amount reduced by 10% to \$255,260 by 2011 Legislative action

B Civic Stadium Note issued February 2012 is subordinate to the Series 2006 bonds so not included in Max. Eligible DS. \$500K Max Annual DS until FY15

C Personal Property Tax Reduction Reimbursement approved by 2011 Legislature under SB372. Annual Reimbursement is \$62,028

D Series 2013 \$5.75M Bond issued March 2013 on parity with Series 2006 Bond. Max. Annual DS \$426,028

Source: City of Missoula Annual Reports

STATISTICAL SECTION

CITY OF MISSOULA, MONTANA PROPERTY TAX LEVIES IN THE URBAN RENEWAL DISTRICT II Last Ten Fiscal Years

	FY '05	FY '06	FY '07	FY '08	FY '09	FY '10	FY '11	FY '12	FY '13	FY '14
Taxing Authority	2004/05	2005/06	2006/07	2007/08	2008/09	2009/10	2010/11	2011/12	2012/13	2013/14
State University Mill Levy	6.00	6.00	6.00	6.00	6.00	6.00	6.00	6.00	6.00	6.00
State Statewide School Equalization	31.28	30.20	25.91	25.39	25.44	26.92	26.60	26.28	26.55	26.15
General Countywide School Levy	79.45	77.20	67.53	66.04	67.17	54.71	53.28	51.18	51.46	52.68
Missoula County	99.42	97.47	86.56	86.44	89.27	72.66	72.00	72.24	74.51	75.71
Missoula Highschool District	65.04	62.96	53.25	48.91	50.33	39.98	38.44	38.76	36.94	36.36
City of Missoula	142.78	148.27	132.60	134.71	141.49	116.33	116.17	118.27	123.75	122.64
Urban Transportation District	9.56	9.35	9.01	9.28	9.45	8.52	8.47	8.97	10.02	10.60
Increment 1-1C *	153.64	175.00	256.84	266.50	270.27	353.75	359.55	372.64	369.31	387.47
Subtotal	587.17	606.45	637.70	643.27	659.42	678.87	680.51	694.34	698.54	717.61

School District 1-1C	123.79	113.74	97.32	92.32	89.20	74.65	72.88	73.61	72.88	75.01
Total leviesfor property in the District lying within School District 1-1C	710.96	720.19	735.02	735.59	748.62	753.52	753.39	767.95	771.42	792.62

	FY '05	FY '06	FY '07	FY '08	FY '09	FY '10	FY '11	FY '12	FY '13	FY '14
Taxing Authority	2004/05	2005/06	2006/07	2007/08	2008/09	2009/10	2010/11	2011/12	2012/13	2013/14
State University Mill Levy	6.00	6.00	6.00	6.00	6.00	6.00	6.00	6.00	6.00	6.00
State Statewide School Equalization	21.23	21.13	21.46	20.06	18.77	24.90	22.73	25.87	25.85	26.37
General Countywide School Levy	53.93	24.02	55.95	52.19	49.56	49.44	43.27	50.14	49.71	53.27
Missoula County	67.48	68.21	71.71	68.31	65.86	65.66	58.47	70.77	71.98	76.55
Missoula Highschool District	44.15	44.06	44.11	38.65	37.13	36.13	31.21	37.97	35.69	36.76
City of Missoula	96.92	103.75	109.86	106.45	104.38	105.12	94.34	115.86	119.55	124.01
Urban Transportation District	6.49	6.54	7.46	7.33	6.97	7.70	6.88	8.79	9.68	10.72
Increment 4-1C *	314.24	328.52	335.27	355.00	402.98	398.69	441.03	384.35	384.05	382.13
Subtotal	610.44	602.23	651.82	653.99	691.65	693.64	703.93	699.75	702.51	715.81

School District 4-1C	65.38	70.20	77.67	64.27	73.61	74.27	66.18	75.98	71.89	74.84
Total leviesfor property in the District lying within School District	675.82	672.43	729.49	718.26	765.26	767.91	770.11	775.73	774.40	790.65

* Note: Tax Increment districts are not taxing authorities and do not levy taxes, i.e. levy mills. Total incremental taxable value can be viewed as a percentage of total taxable value in a district, from information provided by the Montana Department of Revenue. For purposes of disclosure, this report shows that same percentage broken down as a portion of the total mills levied in the

MISSOULA COUNTY
Urban Renewal District II - Top 10 Taxpayers
Tax Year 2013 (FY14)

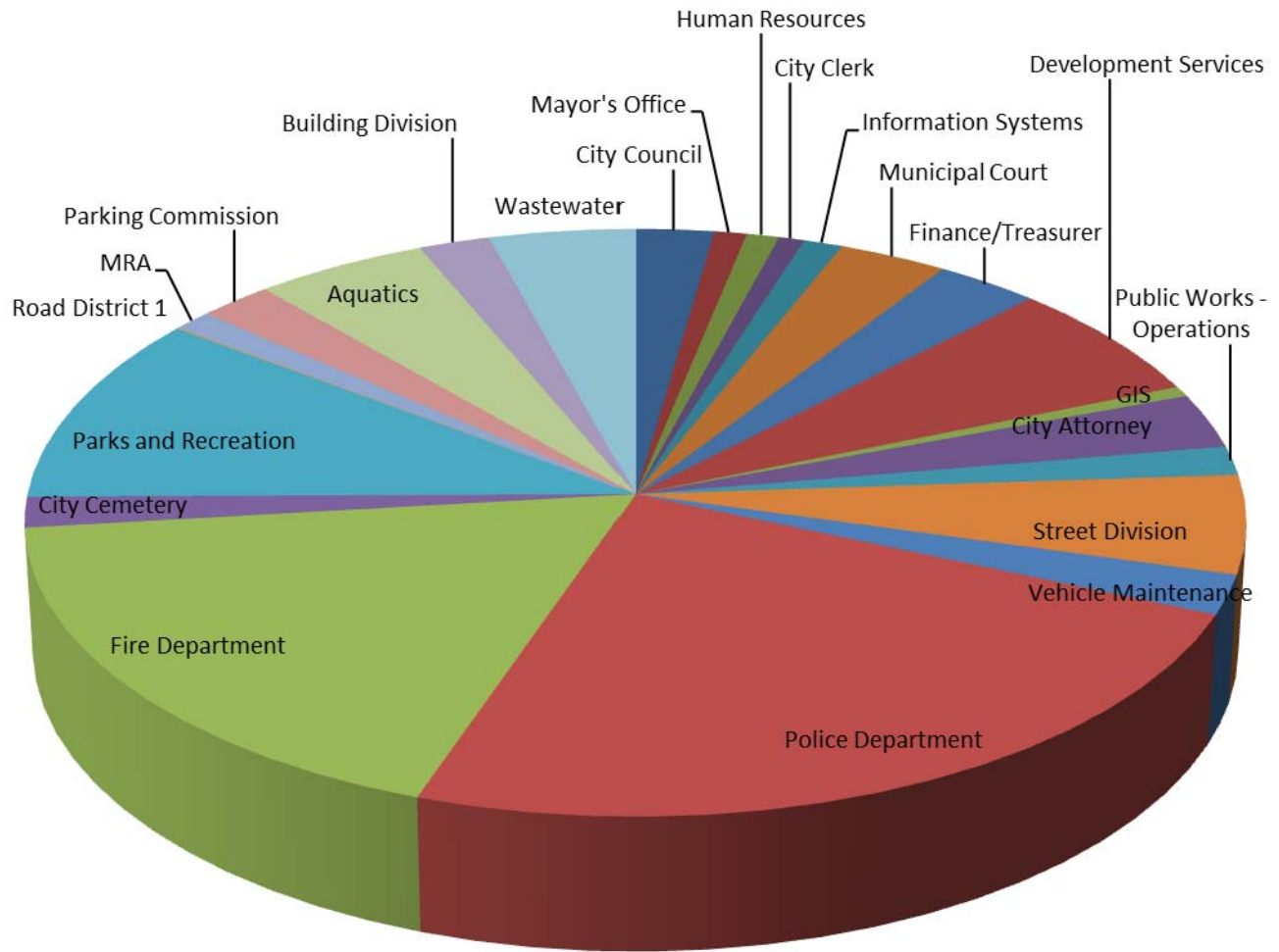
	Taxpayer	Type of Business	2013 Total Tax	2013 Market Value	2013 Taxable Value
1	Safeway Inc.	Grocery Store	\$ 186,610	\$ 8,719,465	\$ 230,321 *
2	Mountain Water Co	Water Company	160,818	7,760,071	200,372
3	Nutritional Laboratories	Food Supplement Manufacturer	128,697	5,928,328	148,496
4	Good Food Store	Coop Communications	101,511	5,076,547	123,597
5	Blackfoot Telephone	Commercial Grocery	89,958	3,747,264	112,419
6	Missoula Electric Coop	Coop Electric Utility	87,929	3,662,745	109,882
7	Like-Nu Auto Services	Automotive Repair	57,976	2,845,207	72,269
8	Norman B. Carey	Bowling Alley, Undeveloped Land	52,514	2,522,381	64,069
9	Talbert Demeester	Residential/Commercial Development	43,665	2,064,080	52,427
10	Millsite Revitalization Project LLC	Undeveloped Land	37,818	1,952,428	46,828
		Total	<u>\$ 947,496</u>	<u>\$ 44,278,516</u>	<u>\$ 1,160,680</u>

* Combines two tax IDs listed seperately for Safeway and Nutritional Labs on County report.

**CITY OF MISSOULA
SCHEDULE OF FTE TRENDS
FY 2009 – 2014**

	<u>2009</u>	<u>2010</u>	<u>2011</u>	<u>2012</u>	<u>2013</u>	<u>2014</u>
	<u># FTE</u>	<u># FTE</u>	<u># FTE</u>	<u># FTE</u>	<u># FTE</u>	<u>Adopted</u>
<i>City Departments</i>						
City Council	12.00	12.00	12.00	12.00	12.00	12.00
Mayor's Office	5.00	5.00	5.00	5.00	5.00	5.00
Human Resources	4.15	4.00	4.00	4.00	4.00	5.00
City Clerk	4.50	4.50	3.50	4.00	4.00	4.00
Information Systems	6.00	6.00	6.00	6.00	6.00	6.00
Municipal Court	13.00	14.25	13.75	13.75	16.75	16.85
Finance/Treasurer	16.00	15.00	15.00	15.00	15.00	16.00
Development Services	0.00	0.00	0.00	0.00	33.71	34.71
GIS	0.00	0.00	0.00	0.00	0.00	3.00
City Attorney	14.90	13.25	12.75	14.00	15.00	16.00
Public Works - Operations	29.87	29.87	29.82	27.52	11.42	8.42
Street Division	28.54	28.54	25.38	28.54	28.79	28.79
Vehicle Maintenance	11.00	11.00	10.50	10.50	10.50	11.50
Police Department	124.50	124.50	117.00	117.00	122.00	126.00
Fire Department	95.00	94.00	95.00	95.00	95.00	95.00
City Cemetery	8.92	8.92	8.92	8.92	8.92	8.92
Parks and Recreation	55.74	55.74	52.51	55.74	55.80	55.34
Total General	429.12	426.57	411.13	416.97	443.89	452.53
General Fund % Increase	0.07%	-0.59%	-3.62%	1.42%	6.46%	1.95%
<i>Special District Funds</i>						
Road District 1	-	-	3.16	-	0.25	0.25
Parks District 1	-	-	3.23	-	-	-
Total Special District	-	-	6.39	-	0.25	0.25
<i>Enterprise Funds</i>						
Aquatics	30.81	30.81	30.81	26.81	26.81	26.81
MRA	6.00	6.00	6.00	6.00	6.00	6.00
Building Division	13.00	9.00	9.00	9.00	10.99	10.99
Wastewater	22.20	22.20	21.50	21.50	21.50	22.50
Parking Commission	11.00	11.00	11.33	11.33	11.50	11.50
Total Enterprise	83.01	79.01	78.64	74.64	76.80	77.80
Non-General Fund % Increase	-0.41%	-4.82%	-0.47%	-5.09%	2.89%	1.30%
Total for City Departments	512.13	505.58	496.16	491.61	520.94	530.58

City FTE Count by Department - FY 2014



City FTE Count by Function - FY2014

