

STATISTICAL SECTION

CITY OF MISSOULA, MONTANA FUND BALANCES OF GOVERNMENTAL FUNDS Last Ten Fiscal Years (modified accrual basis of accounting)

	Fiscal Year									
	2006	2007	2008	2009	2010	2011	2012	2013	2014	2015
General Fund										
Reserved	\$ 588,145	\$ 759,606	\$ 558,624	\$ 699,325	\$ 740,667	\$ -	\$ -	\$ -	\$ -	\$ -
Unreserved	1,341,370	1,365,053	643,449	201,062	1,348,317	-	-	-	-	-
Nonspendable*	-	-	-	-	-	1,148,767	1,232,302	1,259,186	1,129,654	1,404,250
Restricted*	-	-	-	-	-	165,282	105,804	157,822	179,972	179,972
Assigned*	-	-	-	-	-	1,203,481	1,284,045	1,757,237	1,716,911	1,868,348
Unassigned*	-	-	-	-	-	1,152,657	1,940,474	2,968,121	2,543,264	2,160,723
Total General Fund	\$ 1,929,515	\$ 2,124,659	\$ 1,202,073	\$ 900,387	\$ 2,088,984	\$ 3,670,187	\$ 4,562,625	\$ 6,142,366	\$ 5,569,801	\$ 5,613,293
All other governmental funds										
Reserved	\$ 3,602,376	\$ 3,007,558	\$ 3,175,573	\$ 3,654,339	\$ 3,869,555	\$ -	\$ -	\$ -	\$ -	\$ -
Unreserved, reported in:										
Special revenue funds	1,939,572	1,462,685	3,208,509	3,814,089	4,124,600	-	-	-	-	-
Debt service funds	-	-	-	-	-	-	-	-	-	-
Capital projects funds	(5,290,370)	521,612	(1,471,297)	(4,728,035)	(4,089,044)	-	-	-	-	-
Nonspendable*	-	-	-	-	-	11,505	12,042	-	-	-
Restricted*	-	-	-	-	-	7,911,860	7,409,318	6,789,639	6,302,882	6,342,950
Committed*	-	-	-	-	-	1,374,228	2,048,128	2,892,425	4,543,997	5,289,662
Assigned*	-	-	-	-	-	-	-	-	-	21,240
Unassigned*, reported in:										
Special revenue funds	-	-	-	-	-	(332,574)	(149,817)	(105,325)	(986,470)	(400,440)
Debt service funds	-	-	-	-	-	(36,421)	(174,575)	(23,761)	(189,696)	(331,742)
Capital projects funds	-	-	-	-	-	(3,962,631)	(4,602,847)	(5,681,029)	(8,125,283)	(9,907,622)
Neighborhood stabilization funds	-	-	-	-	-	-	(4,139)	-	-	-
Total other governmental funds	\$ 251,578	\$ 4,991,855	\$ 4,912,785	\$ 2,740,393	\$ 3,905,111	\$ 4,965,967	\$ 4,538,110	\$ 3,871,949	\$ 1,545,430	\$ 1,014,048

Source: City of Missoula

* Restated to conform to GASB Statement No. 54

STATISTICAL SECTION

CITY OF MISSOULA, MONTANA CHANGES IN FUND BALANCES OF GOVERNMENTAL FUNDS Last Ten Fiscal Years (modified accrual basis of accounting)

	Fiscal Year									
	2006	2007	2008	2009	2010	2011	2012	2013	2014	2015
Revenues										
Taxes and assessments	\$ 22,340,804	\$24,128,385	\$25,071,209	\$26,649,687	\$27,445,555	\$28,256,587	\$29,396,016	\$31,729,767	\$31,161,007	\$32,506,332
Licenses and permits	2,839,058	2,927,474	4,054,474	2,753,704	3,050,653	3,092,436	2,866,229	3,227,926	3,119,709	3,663,422
Intergovernmental	13,208,755	13,035,698	12,747,140	13,147,938	20,456,138	17,531,499	25,130,561	17,665,516	17,000,835	19,095,397
Charges for services	3,625,225	4,540,977	3,911,813	4,439,499	4,475,126	5,160,326	5,106,399	6,057,449	5,596,577	6,368,100
Fines and forfeitures	1,178,920	1,421,588	1,215,955	1,130,177	1,203,587	1,008,945	1,344,578	1,565,130	1,347,949	1,326,509
Miscellaneous	949,537	975,534	1,699,515	1,168,486	1,464,092	1,205,961	613,255	625,976	544,245	836,745
Interest earnings	192,758	538,418	584,698	156,522	63,362	32,409	41,691	47,960	21,214	13,687
Total revenues	44,335,057	47,568,074	49,284,804	49,446,013	58,158,513	56,288,163	64,498,728	60,919,724	58,791,536	63,810,192
Expenditures										
General government	6,334,244	5,745,356	6,515,738	7,752,035	7,252,975	6,493,866	6,949,250	8,034,601	9,838,640	10,204,889
Public safety	18,138,794	19,880,732	21,637,023	21,669,039	22,227,258	22,431,087	23,834,156	25,803,943	28,002,557	28,012,238
Public works	5,803,509	6,161,928	6,670,377	6,624,812	6,577,834	7,962,836	7,437,537	7,393,392	7,193,974	9,962,351
Public health	1,152,195	1,249,223	1,364,663	1,404,043	1,368,398	1,372,380	1,431,431	1,482,096	1,550,087	1,644,431
Social and economic	108,395	132,897	115,000	118,450	118,450	116,000	116,000	116,000	210,000	210,000
Culture and recreation	3,011,054	3,676,479	3,118,438	3,278,075	3,293,005	3,289,120	3,528,049	3,838,271	4,091,295	4,434,040
Community development	2,379,741	2,202,392	2,041,498	1,193,372	4,017,676	2,264,947	10,348,859	1,238,419	227,258	1,411,431
Conservation of natural resources	-	-	-	-	7,757	450	100	120	120	-
Miscellaneous	-	947,093	-	-	1,041,180	1,189,351	1,003,472	1,049,647	1,057,905	788,789
Debt service - principal	2,783,319	6,127,301	2,973,898	3,026,661	3,121,407	3,484,312	3,689,100	3,057,702	3,695,116	4,696,540
Debt service - interest	1,357,860	1,671,508	1,665,936	1,595,937	1,584,136	1,595,391	1,556,195	2,531,043	841,703	836,167
Capital outlay	18,496,532	9,116,240	7,575,647	5,401,985	8,518,735	7,777,324	6,202,777	6,863,986	5,749,618	8,477,784
Total expenditures	59,565,643	56,911,149	53,678,218	52,064,409	59,128,811	57,977,065	66,096,927	61,409,220	62,458,274	70,678,660
Excess of revenues over (under) expenditures	(15,230,586)	(9,343,075)	(4,393,414)	(2,618,396)	(970,298)	(1,688,902)	(1,598,199)	(489,496)	(3,666,738)	(6,868,468)
Other financing sources (uses)										
Transfers in	5,338,325	7,003,875	4,551,456	5,343,911	5,531,051	4,989,066	7,143,975	7,539,764	7,246,955	7,227,765
Transfers out	(5,170,043)	(6,821,059)	(4,665,834)	(5,282,309)	(5,557,582)	(4,797,139)	(7,478,899)	(8,145,604)	(8,060,866)	(8,065,955)
Payments to Refunded Bond Escrow Agent	-	(2,037,769)	-	-	(983,591)	-	-	(5,541,672)	(5,781,508)	-
Issuance of Refunding Bonds	-	4,355,000	-	-	1,000,000	-	-	5,480,000	5,860,000	-
Premium on Refunded Bonds	-	-	-	-	-	-	-	152,081	-	-
Issuance of long term debt/capital leases	2,850,881	11,574,351	2,378,354	-	3,276,941	4,168,336	2,559,396	1,895,150	1,514,851	3,159,644
Proceeds from sale of capital assets	100	-	840,620	82,716	56,794	-	-	22,171	465	-
Total other financing sources (uses)	3,019,263	14,074,398	3,104,596	144,318	3,323,613	4,360,263	2,224,471	1,401,890	779,897	2,321,454
Net change in fund balances	\$ (12,211,323)	\$ 4,731,323	\$ (1,288,818)	\$ (2,474,078)	\$ 2,353,315	\$ 2,671,361	\$ 626,272	\$ 912,394	\$ (2,886,840)	\$ (4,547,014)
Debt service as a percentage of non-capital expenditures	12%	23%	12%	12%	11%	12%	10%	12%	9%	10%

Source: City of Missoula

STATISTICAL SECTION

CITY OF MISSOULA, MONTANA OVERLAPPING PROPERTY TAX LEVIES Last Ten Fiscal Years

Taxing Authority	2007	2008	2009	2010	2011	2012	2013	2014	2015	2016
City of Missoula	204.73	212.23	222.45	222.45	225.56	233.24	240.90	243.52	245.62	252.81
County of Missoula										
County Wide	133.64	136.19	140.35	138.94	139.80	142.47	145.04	150.32	160.09	167.96
County Wide Schools	104.26	104.04	105.61	104.62	103.45	100.94	100.17	104.60	105.64	104.35
Total	237.90	240.23	245.96	243.56	243.25	243.41	245.21	254.92	265.73	272.31
District Schools										
School District One	150.26	145.45	140.24	142.75	141.50	145.18	141.88	148.94	150.34	149.71
High Schools	82.21	77.05	79.13	76.46	74.63	76.44	71.92	72.19	72.77	75.11
Total	232.47	222.50	219.37	219.21	216.13	221.62	213.80	221.13	223.11	224.82
State Levies										
University	6.00	6.00	6.00	6.00	6.00	6.00	6.00	6.00	6.00	6.00
Education Foundation	40.00	40.00	40.00	40.00	40.00	40.00	40.00	40.00	40.00	40.00
Total	46.00	46.00	46.00	46.00	46.00	46.00	46.00	46.00	46.00	46.00
Urban Transportation District	13.91	14.62	14.86	16.30	16.45	17.69	19.51	21.05	34.26	40.47
Total Levy on City Residents	735.01	735.58	748.64	747.52	747.39	761.96	765.42	786.62	814.72	836.41
Overall Property Tax Increase(Decrease	2.06%	0.08%	1.78%	-0.15%	-0.02%	1.95%	0.45%	2.77%	3.57%	2.66%
Other Levies of Interest										
County Only	34.50	35.68	35.80	35.80	36.18	36.18	36.38	36.37	36.37	37.70
Missoula Rural Fire	80.89	91.13	94.13	94.13	97.97	97.97	100.33	102.39	112.59	112.61

Source: County of Missoula Accounting Office
Note: MRA doesn't get University mills.

**CITY OF MISSOULA, MONTANA
ESTIMATED MARKET VALUE, TAXABLE VALUE AND MILL LEVY
Last Ten Fiscal Years**

Fiscal Year	Estimated Market Value	Taxable Value City Without Tax Increment	Ratio of Total Assessed Value to Total Estimated Market Value	Taxable Value Tax Increment Districts	Mill Levy
2007	\$ 2,901,638,641	\$ 93,533,579	3.22%	\$ 1,446,959	204.73
2008	3,195,587,513	99,332,558	3.11%	1,806,159	212.23
2009	3,369,424,088	103,000,436	3.06%	1,909,938	222.45
2010	3,757,969,949	104,408,018	2.78%	4,507,159	222.45
2011	3,965,146,053	106,229,033	2.68%	5,245,004	225.56
2012	4,140,685,284	107,878,992	2.61%	5,114,782	233.24
2013	4,110,699,383	108,167,019	2.63%	4,530,936	240.90
2014	4,305,020,382	109,336,360	2.54%	4,732,437	243.52
2015	4,406,017,003	108,677,495	2.47%	3,946,539	245.62
2016	7,303,138,213	111,558,503	1.53%	4,297,267	252.81

Source: Missoula County Assessors Office

CITY OF MISSOULA, MONTANA
ASSESSED VALUE AND ESTIMATED TAXABLE VALUE OF PROPERTY
Last Ten Fiscal Years
(in thousands of dollars)

Fiscal Year	Real Property	Equipment & Fixtures	Electric, Airline & Telecommunications	Railroad	Electric, Phone Co-ops & Pollution Control	Other	Tax Increment District	Total Taxable Assessed Value
2007	\$ 84,231	\$ 4,697	\$ 5,291	\$ 346	\$ 379	\$ 61	\$ (1,471)	\$ 93,534
2008	91,045	4,474	4,925	313	382	-	(1,806)	99,333
2009 ^	-	-	-	-	-	-	-	-
2010	96,352	5,133	3,585	348	380	3,117	(4,507)	104,408
2011	96,914	4,785	5,304	397	393	3,681	(5,245)	106,229
2012	98,235	4,851	5,376	402	398	3,732	(5,115)	107,879
2013	98,669	3,852	5,175	440	407	4,155	(4,531)	108,167
2014	99,741	4,086	4,928	587	346	4,381	(4,732)	109,336
2015	101,034	2,242	3,848	501	396	4,604	(3,947)	108,677
2016	104,254	2,071	3,888	509	405	4,727	(4,297)	111,559

*Property in the City does have a Market Value is assessed at actual value at a rate of 2.5%; therefore, the assessed values are equal to actual value.

*This table presents taxable property assessments at values calculated after certified values were received from the Department of Revenue. These values will not articulate to certified values due to the date that this report is run by the Department of Revenue.

^ 2009 Values are no longer available due to Department of Revenue (DOR) software constraints and timing issues in FY2009.

Source: Missoula County Assessor's Office and Department of Revenue.

**CITY OF MISSOULA, MONTANA
PROPERTY VALUE AND NEW CONSTRUCTION
Last Ten Fiscal Years**

Fiscal Year	Assessed Value City Property	New Construction						% Change Over Last Year
		Single Family		Multi-Family		All Construction		
		Number	Value Estimate	Number	Value Estimate	Number	Value Estimate	
2006	\$ 2,805,424,077	374	\$ 35,521,132	79	\$ 4,393,527	1,494	\$ 99,855,627	-11.80%
2007	2,901,638,641	303	31,466,438	153	7,595,391	1,613	89,139,379	-10.73%
2008	3,195,587,513	229	21,554,764	154	9,711,099	1,530	133,165,009	49.39%
2009	3,369,424,088	142	11,627,586	73	3,019,865	1,291	63,987,567	-51.95%
2010	3,757,969,949	139	12,643,362	63	2,552,415	1,306	54,867,213	-14.25%
2011	3,965,146,053	95	8,892,276	262	17,010,385	1,283	87,790,572	60.01%
2012	4,140,685,284	96	9,675,751	329	15,186,996	1,395	58,443,007	-33.43%
2013	4,110,699,383	127	11,284,179	371	14,682,857	1,485	68,558,394	17.31%
2014	4,305,020,382	160	18,828,163	210	9,575,271	1,319	74,177,588	8.20%
2015	4,406,017,003	176	18,033,312	302	12,840,095	1,427	122,960,429	65.76%

Source: City of Missoula Building Inspection Office and Missoula County Assessor

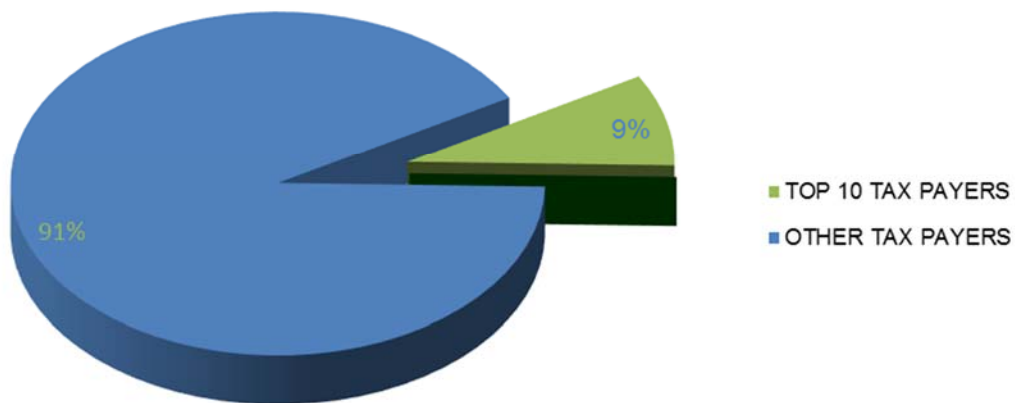
**CITY OF MISSOULA
FOR FY 2015 - FY 2016**

Rank	Taxpayer	Taxable Value
1	MOUNTAIN WATER COMPANY	\$ 1,610,569
2	CENTRYLINK	1,459,704
3	BRESNAN COMMUNICATION	1,142,583
4	RCHP BILLINGS MISSOULA LLC *	1,124,923
5	SOUTHGATE MALL	1,003,468
6	VERIZON WIRELESS	814,678
7	MONTANA RAIL LINK	733,168
8	GATEWAY LIMITED PARTNERSHIP	684,235
9	NORTHWESTERN ENERGY	669,534
10	ST PATRICK HOSPITAL CORP	438,358

* Formerly Community Hospital

\$ 9,681,220

**Top 10 Taxpayers as compared to
remaining taxpayers**



STATISTICAL SECTION

CITY OF MISSOULA, MONTANA PROPERTY TAX LEVIES AND COLLECTIONS GOVERNMENTAL FUND TYPES Last Ten Fiscal Years

Fiscal Year Ended June 30th	Total Tax Levy for Fiscal Year	Collected within the Fiscal Year of the Levy		in Subsequent Years	Total Collections to Date*		Percentage of Delinquencies
		Amount	Percentage of Levy		Amount	Percentage of Levy	
2006	\$ 18,369,060	\$17,935,902	97.64%	\$ 366,878	\$18,302,780	99.64%	2.36%
2007	19,863,202	19,806,028	99.71%	220,890	20,026,918	100.82%	0.29%
2008	21,454,436	20,926,264	97.54%	56,389	20,982,653	97.80%	2.46%
2009	22,914,220	22,301,910	97.33%	317,891	22,619,800	98.72%	2.67%
2010	23,225,564	22,737,517	97.90%	636,697	23,374,213	100.64%	2.10%
2011	23,961,021	22,743,766	94.92%	862,661	23,606,427	98.52%	5.08%
2012	25,161,696	24,607,176	97.80%	211,507	24,818,683	98.64%	2.20%
2013	26,057,435	26,150,721	100.36%	850,849	27,001,570	103.62%	-0.36%
2014	26,625,590	25,882,072	97.21%	140,631	26,022,703	97.74%	2.79%
2015	26,693,366	26,658,963	99.87%	209,372	26,868,335	100.66%	0.13%

Source: City of Missoula

* Delinquent tax collections include amounts collected from penalties, interest, and other delinquent collections. The City does not identify delinquent collections by the year for which the tax was levied.

In 2014 this table was updated to reflect all taxes levied by the City of Missoula, not just the General Fund.

While 2014 delinquencies are within a normal range we feel it germane to the reader to mention the passage of SB96 which reduced 2014 tax receipts for strict personal property. The legislature attempted to make taxing jurisdictions whole by one-time payments. The City of Missoula received a one-time payment of \$327,628 which is reflected in Intergovernmental revenues rather than tax receipts.

**CITY OF MISSOULA, MONTANA
GENERAL OBLIGATION DEBT RATIOS
REQUIRED CONTINUING DISCLOSURE**

The following general obligation debt ratios are provided as of June 30, 2015

Market Valuation	\$	4,406,017,003
Market Valuation (Less Tax Increment)	\$	4,402,070,464
Taxable Valuation	\$	112,624,034
Taxable Valuation (Less Tax Increment)	\$	108,677,495
Population		70,296
Direct Debt Per Capita	\$	301
Direct and Overlapping Debt Per Capita	\$	450
Direct Debt to Market Valuation		0.48%
Direct and Overlapping Debt to Market Valuation		0.72%
Direct Debt to Taxable Valuation		18.77%
Direct and Overlapping Debt to Taxable Valuation		28.09%
Market Valuation per Capita	\$	62,678
Taxable Valuation per Capita	\$	1,546

Source: City of Missoula

STATISTICAL SECTION

SUMMARY OF DIRECT DEBT, INDIRECT DEBT AND DEBT RATIOS REQUIRED CONTINUING DISCLOSURE AS OF JUNE 30, 2015

	Summary of Direct Debt		
	Gross Debt	Less: Debt Service Funds	Net Direct Debt
General Obligation Debt Supported by Taxes	\$ 21,144,176	\$ -	\$ 21,144,176
Debt Supported by General Fund	9,604,928	-	9,604,928
Revenue Debt (Sewer)	21,210,395	(a)	21,210,395
Revenue Debt (TIF and Parking)	24,196,354	(b)	24,196,354
Subtotal of Direct Debt	<u>\$ 76,155,853</u>		<u>\$ 76,155,853</u>

(a) Monies are transferred from the Sewer Enterprise Fund to make the principal and interest payments on these bonds.

(b) Monies from the Missoula Parking Commission and tax increment revenues are used to make principal and interest payments on these bonds.

	Summary of Indirect Debt		
	G.O. Debt as of June 30, 2015	Debt Applicable to Tax Capacity of City	
		Percentage^	Amount
Taxing Unit:			
Missoula County High School District	\$ 7,325,000	52.23%	\$ 3,825,848
Hellgate Elementary School District	9,835,000	14.90%	1,465,415
School District No. 20 (Desmet)	140,000	2.63%	3,682
Missoula County	9,433,000	55.12%	5,199,470
Subtotal of Indirect Debt	<u>\$ 26,733,000</u>		<u>\$ 10,494,414</u>

Total of Direct and Indirect Debt \$ 86,650,267

	Debt Ratios*	
	G.O. Net Direct Debt	G.O. Indirect & Net Direct Debt
Current Year Estimated Value	0.48%	0.72%
Per Capita	\$ 301	\$ 450

*Includes general obligation debt and debt supported by general fund revenues, excludes revenue supported debt.

^The percentage of overlapping debt applicable is estimated using taxable assessed property values. Applicable percentages were estimated by determining the portion of the county's taxable assessed value that is within the government's boundaries and dividing it by the county's total taxable assessed value.

Source: City of Missoula

Source: Missoula County Assessors Office

Source: Local Schools

STATISTICAL SECTION

CITY OF MISSOULA, MONTANA LEGAL DEBT MARGIN INFORMATION Last Ten Fiscal Years (amounts expressed in thousands)

	Fiscal Year									
	2006	2007	2008	2009	2010	2011	2012	2013	2014	2015
Debt Limit	\$ 42,362	\$ 72,541	\$ 79,890	\$ 84,236	\$ 93,949	\$ 99,129	\$ 103,517	\$ 102,767	\$ 107,626	\$ 110,150
Total net debt applicable to limit	14,511	18,972	17,722	16,426	15,224	13,966	12,661	12,124	11,555	10,178
Legal debt Margin	\$ 27,851	\$ 53,569	\$ 62,167	\$ 67,809	\$ 78,725	\$ 85,163	\$ 90,856	\$ 90,643	\$ 96,071	\$ 99,973
Total net debt applicable to the limit as a percentage of debt limit	34.25%	26.15%	22.18%	19.50%	16.20%	14.09%	12.23%	11.80%	10.74%	9.24%

Legal Debt Margin Calculation for Fiscal Year 2015

Assessed Value of Taxable Property as Ascertained by the last Assessment for Taxes	\$ 4,406,017
Debt Limit 2.5% of Assessed Value (1)	2.50%
General Obligation Debt Limit	110,150
Less: Outstanding General Obligation Debt, June 30, 2015	10,178
Total net debt applicable to limit	99,973
Legal Debt Margin	\$ 99,973

(1) Montana Statute (7-7-4201) prescribes a legal debt limit of 2.5% of the total assessed value of taxable property, which was increased in the FY 2007 legislature from 1.51%.

Source: City of Missoula
Source: Missoula County Assessors Office

STATISTICAL SECTION

CITY OF MISSOULA, MONTANA RATIO OF OUTSTANDING DEBT BY TYPE Last Ten Fiscal Years

Fiscal Year	Governmental Activities						Business-Type Activities			Total Primary Government	Total Personal Per capita Income*	Total Population	Debt as a Percentage of Personal Income	Debt Per Capita	Debt as a Percentage of Market Value
	General Obligation Bonds	Limited Obligation Bonds	Special Assessment Bonds	Loans Payable	Capital Leases	Sidewalk & Curb Warrants	Revenue Bonds	Capital Leases	Notes Payable						
2006	\$ 14,070,000	\$ 1,315,000	\$ 15,594,203	\$ 440,972	\$ -	\$ 120,923	\$ 17,079,212	-	-	\$ 48,620,310	\$ 33,247	64,081	2.28%	\$ 759	1.68%
2007	18,720,000	4,760,000	15,455,681	252,453	-	120,923	16,797,231	-	-	56,106,288	34,451	65,826	2.47%	852	1.76%
2008	17,500,000	5,360,000	15,510,165	222,425	-	120,923	15,818,231	-	-	54,531,744	35,294	66,000	2.34%	826	1.62%
2009	16,235,000	5,130,000	14,030,295	191,309	-	100,248	14,801,231	-	-	50,488,083	35,156	66,295	2.17%	762	1.34%
2010	15,065,000	4,935,000	14,350,241	159,063	1,378,125	-	13,883,485	-	-	49,770,914	35,592	66,500	2.10%	748	1.32%
2011	13,840,000	5,625,000	15,021,055	125,646	1,959,752	-	24,579,098	71,250	-	61,221,801	36,032	67,565	2.51%	906	1.63%
2012	12,570,000	5,285,000	15,322,685	91,014	2,174,849	-	23,600,000	385,660	2,525,270	61,954,479	36,479	68,484	2.48%	905	1.50%
2013	11,465,000	4,935,000	14,189,516	659,267	2,215,466	-	22,051,000	337,080	2,236,246	58,088,575	37,397	69,039	2.25%	841	1.41%
2014	11,020,000	4,575,000	12,738,346	534,747	3,201,445	-	20,857,000	232,296	1,962,919	55,121,753	38,444	69,821	2.05%	789	1.28%
2015	9,750,000	4,210,000	11,394,176	427,513	4,967,415	-	19,631,000	149,281	1,430,114	51,959,499	39,521	70,296	1.87%	739	1.18%

Source: City of Missoula

Source: Missoula County Assessors Office

Source: Montana Department of Labor - Research and Analysis Bureau

*2010 is the most recent data available. Preceding years to 2004-2009 are City estimates.

CITY OF MISSOULA, MONTANA
RATIO OF ANNUAL DEBT SERVICE REQUIREMENTS FOR
Last Ten Fiscal Years
Amounts expressed in thousands, except population and per capita

Fiscal Year	General Obligation Bonds*	Total Taxable Assessed Valuation	Percentage of Taxable Value of Property	Estimated Population	Per Capita
2006	\$ 14,070	\$ 91,358	15%	64,081	\$ 219.57
2007	18,720	93,534	20%	65,826	284.39
2008	17,500	99,333	18%	66,000	265.15
2009	16,235	103,000	16%	66,295	244.89
2010	15,065	104,408	14%	66,500	226.54
2011	13,840	106,229	13%	67,565	204.84
2012	12,570	107,879	12%	68,484	183.55
2013	11,465	108,167	11%	69,039	166.07
2014	11,020	109,336	10%	69,821	157.83
2015	9,750	108,677	9%	70,296	138.70

* Presented as net bonded debt (net bonded debt is balance of outstanding debt less restricted funds collected for debt payment). First year presented is FY2012. All other fiscal years is presented as total bonded debt.

Source Restricted Debt: Combining Balance Sheet - Nonmajor Debt Service Funds

Source: City of Missoula

Source: Missoula County Assessors Office

Source: Bureau of Economic Analysis

STATISTICAL SECTION

CITY OF MISSOULA, MONTANA PLEDGED-REVENUE COVERAGE WASTEWATER FACILITY REVENUE BONDS Last Ten Fiscal Years

Fiscal Year	Operating Revenues	Operating Expenses (1)	Revenue Available for Debt	Principal Paid	Debt Service Requirements		
					Interest Paid	Total Debt Service	Coverage (2)
2006	\$ 6,620,032	\$ 3,263,652	\$ 3,356,380	\$ 894,751	\$ 660,341	\$ 1,555,092	216%
2007	6,778,103	3,492,891	3,285,211	941,000	682,728	1,623,728	202%
2008	6,848,299	3,900,755	2,947,544	979,000	641,677	1,620,677	182%
2009	6,543,754	3,860,411	2,683,343	1,017,000	605,558	1,622,558	165%
2010	6,705,911	3,769,644	2,936,267	1,050,023	568,464	1,618,487	181%
2011	6,678,968	3,876,659	2,802,309	1,511,485	721,218	2,232,703	126%
2012	7,375,912	4,701,243	2,674,669	979,098	876,018	1,855,116	144%
2013	7,861,126	4,925,194	2,935,932	1,186,000	711,146	1,897,146	155%
2014	8,023,882	4,871,391	3,152,491	1,194,000	616,515	1,810,515	174%
2015 ^	8,208,336	5,111,953	3,096,383	1,226,000	564,953	1,790,953	173%

^ Debt Service Coverage Calculation - 2015	
	FY 2015
Revenues	
Operating Revenue	\$ 8,444,588
Less: Federal Credit	(236,252)
Total Operating Revenue	8,208,336
Expenses	
Operating Expenses	(7,691,517)
Add back Depreciation	2,579,564
Total Operating Expenses	(5,111,953)
Revenues Available for Debt Service:	\$ 3,096,383
Debt Service	
Principal	\$ 1,226,000
Interest	828,205
Less: Federal Credit	(263,252)
Net Debt Service	\$ 1,790,953
Coverage	173%

Source: City of Missoula Annual Financial Reports

(1) Does not include depreciation or bond interest.

(2) Net revenues divided by the maximum debt payment due in any future calendar year.

STATISTICAL SECTION

CITY OF MISSOULA, MONTANA COMPONENT UNIT REVENUE BOND COVERAGE PARKING COMMISSION REVENUE BONDS

Fiscal Year	Operating Revenues	Operating Expenses (A)	Net Available For Debt Service	Principal Paid	Interest Paid	Total Debt Service	Coverage (B)
2006	\$ 1,474,651	\$ 855,051	\$ 619,600	\$ 95,000	\$ 66,230	\$ 161,230	384%
2007	1,391,368	903,019	488,349	100,000	63,237	163,237	299%
2008	1,429,972	1,008,437	421,535	105,000	58,345	163,345	258%
2009	1,448,179	1,013,313	434,866	110,000	53,162	163,162	267%
2010	1,415,863	1,026,254	389,609	115,000	46,778	161,778	241%
2011	1,443,085	947,789	495,296	120,000	(86,268)	33,732	1468%
2012	1,739,234	876,485	862,749	220,000	384,813	604,813	143%
2013	1,838,073	958,094	879,979	210,000	302,292	512,292	172%
2014	1,840,624	1,060,034	780,590	220,000	317,253	537,253	145%
2015 *	1,814,680	1,336,268	478,412	40,000	268,709	308,709	155%

* Debt Service Coverage Calculation - 2015	
	FY 2015
Revenues	
Total Operating Revenue	\$ 1,629,455
MRA Pledge	185,225
Total Revenues Pledged	1,814,680
Expenses	
Operating Expenses	(1,740,325)
Add back Depreciation ^	404,057
Total Operating Expenses	(1,336,268)
Revenues Available for Debt Service	<u>\$ 478,412</u>
Debt Service	
Principal	\$ 40,000
Interest	268,709
Less: Federal Credit	-
Net Debt Service	<u>\$ 308,709</u>
Coverage	155%

(A) Does not include depreciation or bond interest.

(B) Net available divided by debt service.

Source: City of Missoula Annual Reports

**CITY OF MISSOULA, MONTANA
REVOLVING FUND YEAR-END BALANCES
REQUIRED CONTINUING DISCLOSURE
Last Ten Fiscal Years**

Fiscal Year	Revolving Fund Cash Balance	Principal Amount of Bonds	Percentage
2006	\$ 889,718	\$ 15,594,203	5.7%
2007	954,148	15,455,681	6.2%
2008	779,966	15,510,165	5.0%
2009	719,399	14,030,295	5.1%
2010	746,320	14,250,241	5.2%
2011	794,547	15,021,055	5.3%
2012	774,812	15,322,685	5.1%
2013	719,735	14,189,516	5.1%
2014	636,917	12,738,346	5.0%
2015	569,709	11,394,176	5.0%

Source: City of Missoula

STATISTICAL SECTION

CITY OF MISSOULA, MONTANA REVOLVING FUND CHANGES IN FUND BALANCE REQUIRED CONTINUING DISCLOSURE Last Ten Years

	Fiscal Year									
	2006	2007	2008	2009	2010	2011	2012	2013	2014	2015
Beginning Balance	\$ 808,460	\$ 889,718	\$954,148	\$779,966	\$719,399	\$ 764,101	\$ 794,547	\$ 791,209	\$ 735,266	\$ 652,449
Disbursements/Transfers	81,258	64,430	(174,182)	(60,567)	44,702	30,446	(3,338)	(55,943)	(82,817)	(65,853)
Ending Balance	<u>\$ 889,718</u>	<u>\$ 954,148</u>	<u>\$779,966</u>	<u>\$719,399</u>	<u>\$764,101</u>	<u>\$ 794,547</u>	<u>\$ 791,209</u>	<u>\$ 735,266</u>	<u>\$ 652,449</u>	<u>\$ 586,596</u>
Assets:										
Cash	\$ 885,738	\$ 928,632	\$776,343	\$702,257	\$746,320	\$ 793,639	\$ 774,812	\$ 719,735	\$ 636,917	\$ 569,709
Due from SID Funds	-	-	-	-	-	-	865	-	-	569,709
Other Receivables	218,910	222,281	184,856	182,844	167,952	135,548	134,640	119,108	103,577	88,046
Total Assets	<u>1,104,648</u>	<u>1,150,913</u>	<u>961,200</u>	<u>885,101</u>	<u>914,272</u>	<u>929,187</u>	<u>910,317</u>	<u>838,843</u>	<u>740,494</u>	<u>1,227,463</u>
Liabilities:										
Interfund Payable	-	-	-	-	-	-	-	-	-	568,353
Deferred Revenue	214,930	196,765	181,233	165,702	150,171	134,639	119,108	103,577	88,046	72,514
Total Liabilities	<u>214,930</u>	<u>196,765</u>	<u>181,233</u>	<u>165,702</u>	<u>150,171</u>	<u>134,639</u>	<u>119,108</u>	<u>103,577</u>	<u>88,046</u>	<u>640,867</u>
Total Fund Balance	<u>\$ 889,718</u>	<u>\$ 954,148</u>	<u>\$779,966</u>	<u>\$719,399</u>	<u>\$764,101</u>	<u>\$ 794,547</u>	<u>\$ 791,209</u>	<u>\$ 735,266</u>	<u>\$ 652,449</u>	<u>\$ 586,596</u>

Source: City of Missoula

**CITY OF MISSOULA, MONTANA
DEMOGRAPHIC AND ECONOMIC STATISTICS
Last Ten Fiscal Years**

Fiscal Year	Population		Income Statistics		State Unemployment Rate	Missoula County Unemployment Rate
	City Population (1)	County Population	Total Personal Income (2)	Capita Income (2)		
2006	64,081	104,145	\$ 3,460,865	\$ 33,247	3.5%	3.3%
2007	65,826	105,911	3,646,623	34,451	2.5%	2.3%
2008	66,000	107,565	3,795,962	35,294	4.1%	4.1%
2009	66,295	108,000	3,818,772	35,156	5.3%	5.1%
2010	66,500	108,500	3,866,079	35,592	6.6%	6.3%
2011	67,565	110,121	3,913,971 *	36,032 *	6.9%	6.8%
2012	68,484	111,054	3,962,457 *	36,479 *	6.5%	6.4%
2013	69,039	111,769	4,181,210	37,397	5.5%	5.7%
2014	69,821	112,684	4,306,646 *	38,444 *	4.6%	4.9%
2015	70,296	113,450	4,435,846 *	39,521 *	4.0%	3.7%

(1) 2005 and 2010 population is from the US Census Bureau. All other years are estimated.

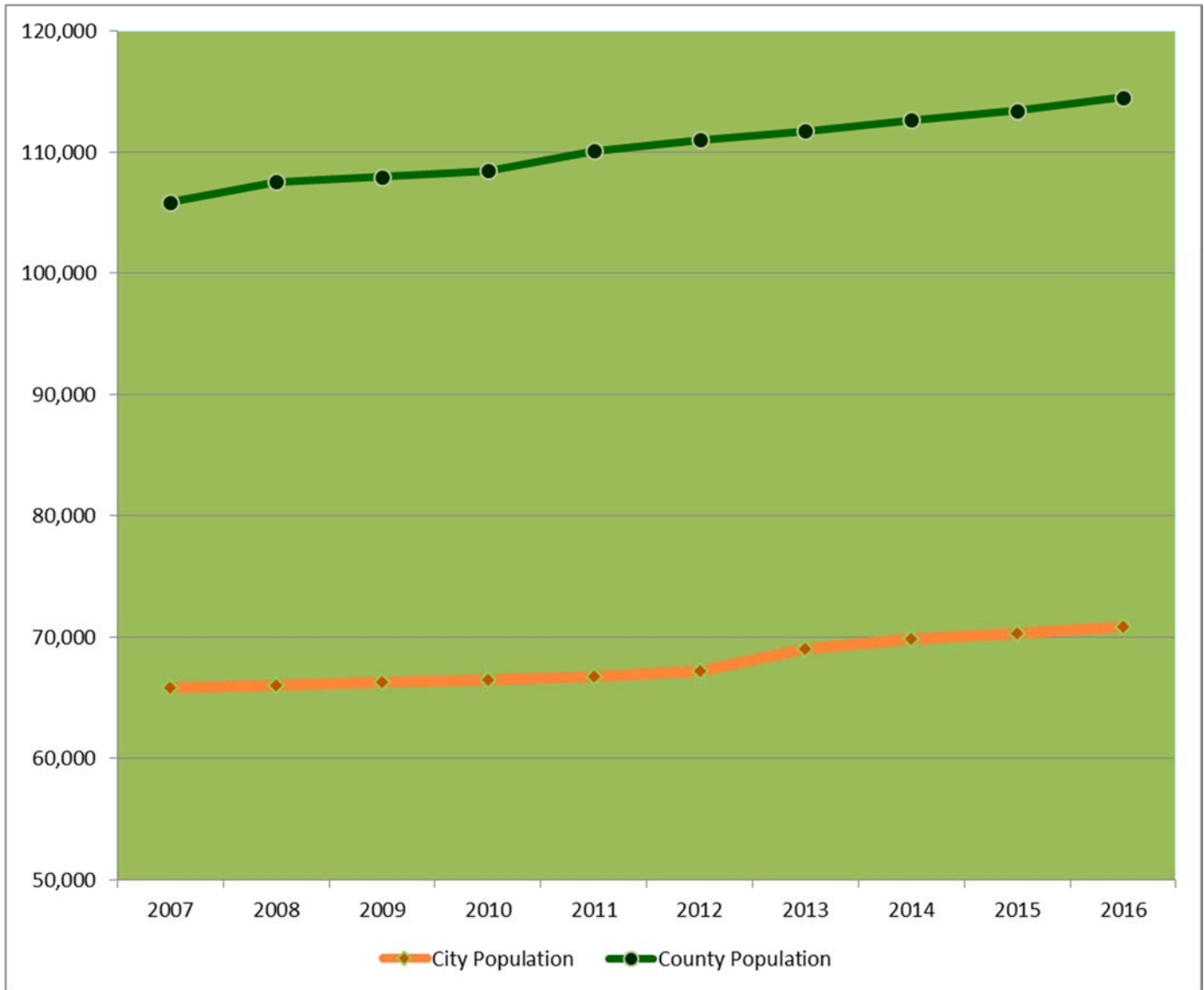
(2) Only Missoula County information available.

* Estimate based on average increase of prior years.

Source - Bureau of Economic Analysis and Department of Labor & Industry, Research & Analysis Bureau

N/A - Not available

County and City of Missoula Population per year



County and City of Missoula Percent increase in population per year



STATISTICAL SECTION

City of Missoula Climate Demographics Last 30 years

Temperature	Missoula (1893-2003)	Kalispell (1899-2003)	Butte (1894-2003)	State of Montana	State of Idaho
Latest 30 Year Normal Temperature (1971-2000)	44.8	42.6	39.5	-	-
Average Temperature (Jan-Dec)	44.3	43.1	39.9	-	-
	-33	-38	-52	-70	-60
Lowest Temperature	(1/26/57)	(1/30/50 - 1/31/50)	(2/9/33)	Rogers Pass (1/20/54)	Island Park Dam (1/18/43)
	107	105	100	117	118
Highest Temperature	(7/6/2007)	(8/4/61)	(7/22/31)	Medicine Lake (7/5/37)	Orofino (7/28/34)

Precipitation	Missoula (1893-2003)	Kalispell (1899-2003)	Butte (1894-2003)	State of Montana	State of Idaho
Latest 30 Year Normal Precipitation (1971-2000)	13.84	17.21	12.78	-	-
Average Precipitation (Jan-Dec)	13.65	16.22	12.97	-	-
	Trace	Trace	Trace	-	-
Driest Month	August 1967	August 1955	October 1987	-	-
	8.16	10.42	6.89	-	-
Driest Year	1931	1944	1935	-	-
	2.32 inches	2.71 inches	3.00 inches	-	-
Greatest 24-hour Precipitation	(11/5/1927)	(6/29/1982)	(06/09/1913)	-	-
	7.38 inches	6.02 inches	8.86 inches	-	-
Wettest Month	May 1980	July 1983	June 1913	-	-
	21.92 inches	25.23 inches	20.55 inches	-	-
Wettest Year	1998	1996	1909	-	-
	44 inches	58.3 inches	61.3 inches	-	-
Annual Average Snowfall	27.5 inches	20.1 inches	30.0 inches	-	-
	(11/30/1893)	(12/27/1911)	(10/10/1911)	-	-
Greatest 24-hour Snow	54.1 inches	55.9 inches	32.5 inches	-	-
	December 1996	December 1936	October 1911	-	-
Greatest Monthly Snow	106.1 inches	148.8 inches	125.5 inches	-	-
	1996	1996	1996	-	-
Greatest Annual Snowfall	27.0 inches	61.0 inches	27.0 inches	-	-
	(12/29/1996)	(12/30/1996)	(12/29/1996)	-	-
Greatest Snow Depth					

Source: National Weather Service Forecast Office, Missoula, MT

STATISTICAL SECTION

CITY OF MISSOULA, MONTANA TOP EMPLOYERS IN CITY OF MISSOULA Current and Ten Years Ago

Employer	Type of Product or Service	2015	Percentage of Total City Employment	2006 **	Percentage of Total City Employment
University of Montana	Higher Education	3,065	4.36%	2698	4.21%
St. Patrick Hospital	Healthcare	1,450	2.06%	1425	2.22%
Montana Rail Link	Rail Transportation	1,167	1.66%	1000	1.56%
Missoula County Public Schools	Public Education	1,124	1.60%	1182	1.84%
DirecTV (now part of AT&T family)	Service	935	1.33%	*	NA
Community Medical Center	Healthcare	916	1.30%	1245	1.94%
Missoula County	Government	878	1.25%	659	1.03%
Wal-Mart	Retail	585	0.83%	500	0.78%
Us Forest Service	Federal Government	584	0.83%	500-750	0.78%-1.12%
Opportunity Resources	Service	579	0.82%	*	NA
Plum Creek Timber				1000+	^
Southgate Mall				750-1000	0.78-1.12%
Smurfit-Stone Container Corp				507	0.79%

^ Some information was in range format for FY2006

* Employers were added after 2006

** Numbers are average between 2005 & 2007

Source - Bureau of Economic Analysis and Department of Labor & Industry, Research & Analysis Bureau

CITY OF MISSOULA, MONTANA
CITY SERVICES AND EMPLOYMENT

Bargaining Unit	Number of Members	Date of Expired Contract
International Association of Firefighters, Local No. 271	88	June 30, 2015 *
Missoula Police Protective Association	98	June 30, 2019
Montana Public Employees Association		
Maintenance Technicians in Parks and Recreation Dept	9	June 30, 2015 *
Wastewater Lab Techs	2	June 30, 2015 *
Parking Commission	7	June 30, 2015 *
Wastewater Plant Operators	6	^
Teamsters Union, Local No. 2	20	June 30, 2015 *
Operators' Union, Local No. 4000	12	June 30, 2015 *
Machinists Union, Local No. 88, District No. 86	8	June 30, 2015 *
Teamsters, Parks and Recreation Seasonal	23	June 30, 2015 *
Wastewater Operator's Union, Local 400	8	June 30, 2015 *
International Brotherhood of Electrical Workers	2	June 30, 2015 *
MEA-MFT	5	June 30, 2015 *

Note: Basic Services provided through City government include Police and Fire protection, Municipal Sewer and Sanitation, street Maintenance and Construction, Building Inspection, Zoning Enforcement, Public Works, and Parks and Recreation. As of June 30, 2008, the City employed approximately 639 workers, including Seasonal and Intermittent. Of the total City workforce, approximately 40% were members of organized bargaining units. State law requires Montana Cities to bargain collectively with formally recognized bargaining units. The City considers relations with its bargaining groups to be satisfactory.

* At time of budget publication, negotiations were ongoing

^ Newly created Union on July 1, 2015. Members were from WW Operators Union Local 400

Source: City of Missoula

STATISTICAL SECTION

MISSOULA, MONTANA METROPOLITAN AREA EMPLOYMENT BY MAJOR INDUSTRY TYPE ANNUAL AVERAGE Last Ten Fiscal Years

	2006	2007	2008	2009	2010	2011	2012	2013	2014	2015 (A)
Goods Producing	6,200	6,200	6,100	5,500	4,600	4,700	4,400	4,500	4,575	4,620
Trade, Transportation and Utilities	12,800	12,900	12,900	12,100	11,300	11,400	11,600	11,100	11,917	12,550
Professional and Business Service	5,200	5,900	6,200	6,100	6,900	6,900	6,800	7,000	7,025	7,060
Educational and Health Services	8,300	8,300	8,700	8,900	9,200	9,500	9,800	10,000	9,967	10,050
Healthcare and Social Assistance	7,900	7,900	8,200	8,400	8,700	9,000	9,200	9,300	9,408	9,500
Leisure and Hospitality	7,100	7,600	7,900	7,600	7,000	6,900	7,400	7,300	7,742	7,980
Government	10,600	10,400	9,300	8,300	10,300	8,400	10,300	10,500	10,567	11,400
	58,100	59,200	59,300	56,900	58,000	56,800	59,500	59,700	61,201	63,160

Source: Department of Labor & Industry, Research & Analysis Bureau

(A) Most recent data available through October 2015.
All other years are annual data

STATISTICAL SECTION

CITY OF MISSOULA, MONTANA OPERATING INDICATORS BY FUNCTION/PROGRAM Last Ten Fiscal Years

Function/Program	2006	2007	2008	2009	2010	2011	2012	2013	2014	2015
General Government										
Business Licenses Issued	5,173	5,290	6,386	5,141	5,947	5,103	5,872	5,585	5,418	4,566
Amount of SID's Billed	\$ 2,748,200	\$ 2,793,604	\$ 2,802,979	\$ 2,759,874	\$ 2,788,949	\$ 2,979,149	\$ 2,806,770	\$ 2,565,463	\$ 2,468,350	\$ 2,277,577
# Sewer Bills	38,728	41,002	41,818	42,323	42,860	43,493	44,495	45,042	45,042	45,448
Public Safety Activities										
Citations issued	33,262	38,468	32,219	31,700	25,136	20,232	20,554	18,139	15,420	14,042
Orders of Protection issued	604	417	400	398	277	209	236	203	318	267
Attorney's Office - Lawsuits & Claims	51	47	49	41	26	24	22	32	29	28
Attorney - Opened criminal files	4,235	3,181	2,708	2,372	2,313	3,029	4,007	4,255	3,955	3,023
Officers/1,000 population	2	2	2	2	2	1	2	2	2	2
Total sworn officers	100	102	101	101	100	100	104	106	109	109
Police calls for Service	43,778	40,515	40,981	41,424	41,373	40,272	41,334	42,302	41,728	45,605
Total Fire Department Incident Responses*	5,259	5,497	5,805	5,850	6,217	5,752	6,131	6,548	6,745	7,140
Public Works										
Miles of sidewalk installed	9.34	9.19	7.00	4.00	6.78	5.42	4.72	5.58	9.19	4.35
Building Permits Issued	1,613	1,613	1,530	1,291	1,306	1,283	1,395	1,485	1,319	1,427
Construction Value of Bldg permits issued	\$ 89,139,379	\$ 89,139,379	\$ 133,165,009	\$ 63,987,567	\$ 54,867,213	\$ 87,790,572	\$ 58,443,007	\$ 68,558,394	\$ 74,177,588	\$ 122,960,429
Miles of Street	359	338	312	383	391	413	416	419	422	428
Population	64,081	65,826	66,000	66,295	66,500	67,565	68,484	69,039	69,821	70,296

Source: City of Missoula

* Fire Department Incident Responses are based on Calendar Years. Current Year number through 12/31/14.

STATISTICAL SECTION

CITY OF MISSOULA, MONTANA CAPITAL ASSET STATISTICS BY FUNCTION/PROGRAM Last Nine Fiscal Years

Function	Fiscal Year								
	2007	2008	2009	2010	2011	2012	2013	2014	2015
GENERAL GOVERNMENT									
Vehicles	5	7	4	4	4	2	2	2	2
Buildings	2	3	3	3	3	4	4	5	5
PUBLIC SAFETY ACTIVITIES									
Fire Stations	5	5	5	5	5	5	5	5	5
Fire Engines/Trucks/Vehicles/Vans	27	26	26	25	25	31	32	32	33
Police Motorcycles	6	6	6	6	6	4	5	5	5
Police Patrol Cars/Passenger Vehicles/Other Vehic	47	58	62	63	63	66	59	63	63
PUBLIC WORKS									
Streets (sq. yards)	6,761,248	6,826,850	6,837,927	7,056,869	7,265,469	7,399,746	7,539,539	7,636,873	7,774,642
Curbs (lineal feet)	1,957,574	1,997,728	1,957,574	2,100,819	2,135,361	2,159,796	2,182,153	2,241,246	2,202,441
Sidewalks (sq. feet)	9,830,923	10,015,638	10,232,017	10,599,017	12,699,836	12,824,406	13,345,978	13,588,598	13,506,374
Storm Sewer (lineal feet)	153,275	153,275	157,826	162,158	168,148	172,360	179,388	179,888	170,051
Sumps	5,160	5,307	5,307	5,385	5,496	5,524	4,183	4,209	5,585
Signs	54,901	53,768	56,635	57,502	58,369	59,236	60,103	60,970	61,837
Vehicles	98	107	161	163	165	163	123	123	123
Buildings	7	4	4	4	4	4	5	5	5
PUBLIC HEALTH ACTIVITIES									
Cemetery & Buildings	7	7	7	7	7	7	7	7	7
Vehicles/Tractors/Trucks/Mowers	17	16	14	14	15	17	18	18	18
CULTURE AND RECREATION									
Parks	46	51	67	68	69	70	70	70	70
Trails	18	20	22						
Commuter	N/A	N/A	N/A	22	22	23	23	23	23
Recreational	N/A	N/A	N/A	55	55	56	56	56	56
Park Shelter/Band Shells/Pavilions	10	10	10	12	15	17	18	18	18
Buildings	20	23	23	23	23	23	23	23	23
Vehicles (Including trailers)	57	55	58	59	59	59	108	112	112
HOUSING & COMMUNITY DEVELOPMENT									
Vehicles	10	10	1	1	1	1	1	1	1
Buildings	2	2	-	-	-	-	-	-	-

Capital Asset Statistics by Function information prior to 2006 is not readily available in this format.

Source: City of Missoula Fixed Asset Accounting Module
Source: Various City of Missoula Departments

**CITY OF MISSOULA, MONTANA
SPECIAL ASSESSMENTS BILLED AND COLLECTED
Last Ten Fiscal Years**

Fiscal Year	Assessments Billed	Current Assessments Paid	Percent Collected	Delinquent Assessments Paid	Total Assessments Paid	Penalty and Interest Paid
2006	\$ 2,748,200	\$ 2,638,272	96.00%	\$ 246,280	\$ 2,884,552	\$ 10,996
2007	2,793,604	3,695,269	132.28%	106,930	3,802,199	11,629
2008	2,802,979	2,690,299	95.98%	107,817	2,798,116	11,653
2009	2,759,874	2,666,875	96.63%	109,340	2,776,215	11,539
2010	2,788,949	2,796,909	100.29%	136,607	2,933,516	14,999
2011	2,979,149	2,818,935	94.62%	159,941	2,978,876	18,139
2012	2,806,770	2,760,131	98.34%	160,377	2,920,508	16,070
2013	2,565,463	2,549,864	99.39%	51,388	2,601,252	8,058
2014	2,468,350	2,464,285	99.84%	19,211	2,483,496	11,121
2015	2,277,577	2,308,308	101.35%	8,655	2,316,963	8,359

Note: Property tax levies are set in August at the time the City budget is approved and billed November 1 by the County. Half of the taxes are due by November 30 and the other half by May 31. After those dates, the bills are delinquent (and a lien is placed on the property). The interest charged on delinquent taxes is one percent per month, with a two percent penalty.

Source: City of Missoula

STATISTICAL SECTION

CITY OF MISSOULA, MONTANA SPECIAL IMPROVEMENT DISTRICT 512, 521 AND 522 REQUIRED CONTINUING DISCLOSURE

Fiscal Year	Combined Market Value of All Districts	Average Ratio of Market Value to Assessments of Individual Parcels	Highest Ratio of Market Value to Assessments of Individual Parcels	Lowest Ratio of Market Value to Assessments of Individual Parcels	Median Ratio of Market Value to Assessments of Individual Parcels
2005	\$ 166,871,500	\$ 95.60	\$ 2,692.30	\$ 2.07	\$ 117.52
2006	158,701,080	757.82	10,797.00	5.82	221.17
2007	191,613,295	1,219.98	13,841.43	6.35	221.37
2008	211,405,977	317.09	4,977.27	5.04	141.94
2009	234,349,048	954.97	6,111.87	20.47	160.49
2010	236,039,170	1,071.95	30,710.27	22.07	247.40
2011	215,320,296	1,296.29	51,474.37	40.46	823.26
2012	296,665,021	1,601.54	60,391.92	47.21	957.42
2013	343,465,684	43.42	43.42	43.42	43.42
2014	212,236,360	6,153.16	233,364.95	81.73	3,711.41
2015	275,246,631	7,937.62	244,392.70	10.65	5,041.41

Source: City of Missoula and Missoula County Assessor's Office

STATISTICAL SECTION

CITY OF MISSOULA, MONTANA SPECIAL IMPROVEMENT DISTRICTS Current as of June 30, 2015

SID Number	Combined Market Value of All Districts	Average Ratio of Market Value to Assessments of Individual Parcels	Highest Ratio of Market Value to Assessments of Individual Parcels	Lowest Ratio of Market Value to Assessments of Individual Parcels	Median Ratio of Market Value to Assessments of Individual Parcels
FY11 Total ^	\$ 2,698,949,941	\$ 1,042.61	\$ 42,350.68	\$ 0.03	\$ 341.14
FY12 Total ^	3,105,150,944	893.51	26,719.49	1.76	429.81
FY13 Total ^	3,365,098,815	352.35	40,261.28	4.87	110.58
FY14 Total ^	1,497,286,124	1,737.80	233,364.95	0.22	442.92
512/521/522	275,246,631	7,937.62	244,392.70	10.65	5,041.41
0520	91,725,504	925.23	6,037.69	75.91	765.82
0524	710,017,533	3,815.48	150,510.99	17.21	2,512.23
0525	26,948,933	1,038.64	2,799.69	293.37	838.77
0526	97,472,838	1,048.30	5,938.33	33.74	810.80
0532	63,625,440	1,866.29	5,811.37	402.31	1,836.67
0533	10,231,178	1,045.62	4,801.05	523.82	731.30
0534	12,631,758	817.64	1,502.08	179.73	795.46
0536	22,216,268	793.01	1,775.66	19.71	775.32
0540	107,888,348	1,192.63	1,949.72	26.52	1,178.70
0541	496,202,901	9,239.55	60,404.17	0.17	8,596.83
0543	81,145,298	8,989.58	18,495.98	4,077.35	8,635.39
0544	87,670,693	605.07	1,804.33	9.66	608.84
0545	13,423,539	7,066.20	16,156.02	1,662.92	6,910.01
0546	11,193,896	7,312.64	9,499.86	5,630.93	7,154.35
0548	9,324,692	35.97	69.22	0.17	39.48
CS08	8,912,011	545.24	1,476.03	130.32	632.83
CS09	21,267,872	511.06	2,322.28	55.39	379.77
CS10	30,509,645	671.89	8,752.11	49.19	376.20
CS12	54,021,059	3,437.35	38,893.83	142.38	1,503.85
CS13	68,241,260	9,614.93	109,161.68	53.57	4,284.05
CS15	18,697,138	1,225.52	16,194.87	79.83	616.96
CS344	11,675,270	601.31	2,684.23	125.52	472.98
CS345	20,756,055	751.67	1,864.82	84.66	655.44
CS346	22,433,730	449.29	2,176.12	51.59	313.16
FY15 Total ^	\$ 2,373,479,490	\$ 2,861.51	\$ 244,392.70	\$ 0.17	\$ 795.46

Source: City of Missoula and Missoula County Assessor's Office

^ First year to disclose information for all City SID's is FY 2011

**CITY OF MISSOULA, MONTANA
MISSOULA PARKING COMMISSION RATES AND FEES
Last Ten Fiscal Years**

Fiscal Year	On-Street Hourly Parking	Garage Hourly Parking	Parking Garage Lease Space Range	Off-Street Lease Space Range	Average Off-Street and Garage Lease Rate
2006	\$ 0.50	\$ 0.25	\$55.00 TO \$65.00	\$30.00 TO \$50.00	\$ 44.00
2007	0.50	0.25	55.00 TO 65.00	30.00 TO 50.00	45.00
2008	0.50	0.25	55.00 TO 65.00	30.00 TO 50.00	45.00
2009	0.50	0.25	55.00 TO 65.00	30.00 TO 50.00	45.00
2010	0.50	0.25	55.00 TO 65.00	30.00 TO 50.00	45.00
2011	0.50	1.00	65.00 TO 75.00	35.00 TO 55.00	49.00
2012	0.50	1.00	65.00 TO 75.00	30.00 TO 55.00	51.00
2013	0.50	1.00	65.00 TO 75.00	30.00 TO 55.00	51.00
2014	0.50	1.00	65.00 TO 75.00	30.00 TO 55.00	53.00
2015	0.50	1.00	65.00 TO 75.00	30.00 TO 55.00	53.00

Source: Missoula Parking Commission

STATISTICAL SECTION

CITY OF MISSOULA, MONTANA MISSOULA PARKING COMMISSION OPERATIONS AND FACILITIES Last Ten Fiscal Years

Fiscal Year	Parking Meters	Leased Parking Spaces	Parking Lots Throughout Downtown Missoula	Leased Parking Garage Spaces	University District Parking Permits	Percentage of Parking Ticket Revenue	Percentage of Parking Meter Revenue	Percentage of Garage Parking Revenue	Percentage of Leased Parking Revenue other than Parking Garage	Percentage of Other Revenue
2006	1,075	801	13	257	1,124	20%	34%	14%	28%	5%
2007	1,075	801	13	257	1,124	20%	34%	14%	27%	4%
2008	1,075	801	13	257	1,592	18%	31%	16%	21%	14%
2009	1,129	800	12	257	1,011	19%	35%	16%	21%	10%
2010	1,061	800	12	257	1,166	18%	37%	18%	23%	4%
2011	1,061	800	12	257	1,198	18%	37%	18%	23%	4%
2012	1,015	855	12	257	1,012	17%	38%	14%	29%	3%
2013	1,015	890	12	460	1,025	16%	34%	16%	32%	1%
2014	1,015	1,133	12	522	870	14%	33%	19%	31%	1%
2015	1,061	1,275	15	523	918	13%	34%	18%	25%	10%

Source: Missoula Parking Commission

**CITY OF MISSOULA, MONTANA
COMPONENT UNIT MISSOULA REDEVELOPMENT AGENCY
HISTORICAL VALUE OF TAX INCREMENT DISTRICTS
For the Last Ten Fiscal Years**

Urban Renewal District II (1-1C, 4-1C)

Fiscal Year	Personal Property		Total Taxable Value
	Personal Attached Taxable Value	(Unattached) Taxable Value	
2006	\$ 2,444,439	\$ 197,268	\$ 2,641,707
2007	2,660,473	311,261	2,971,734
2008	2,718,817	342,487	3,061,304
2009	3,162,083	358,422	3,520,505
2010	3,302,146	318,269	3,620,415
2011	3,415,110	336,897	3,752,007
2012	3,371,473	309,233	3,680,706
2013	3,379,411	262,535	3,641,946
2014	3,586,154	216,449	3,802,603

Urban Renewal District III (1-1D)

Fiscal Year	Real Property & Personal Property		Total Taxable Value
	Personal Attached Taxable Value	(Unattached) Taxable Value	
2006	\$ 6,991,926	\$ 677,495	\$ 7,669,421
2007	7,111,962	586,632	7,698,594
2008	7,306,424	406,379	7,712,803
2009	8,468,861	468,589	8,937,450
2010	9,027,375	514,481	9,541,856
2011	8,939,540	568,590	9,508,130
2012	9,118,547	552,532	9,671,079
2013	8,797,853	381,195	9,179,048
2014	8,293,647	177,106	8,470,753

Front Street URD (1-1F)

Fiscal Year	Real Property & Personal Property		Total Taxable Value
	Personal Attached Taxable Value	(Unattached) Taxable Value	
2009 *	\$ 1,362,450	\$ 51,225	\$ 1,413,675
2010	1,571,488	50,604	1,622,092
2011	2,105,933	124,059	2,229,992
2012	1,908,040	121,154	2,029,194
2013	1,903,163	83,983	1,987,146
2014	1,911,595	38,792	1,950,387

Riverfront Triangle URD

Fiscal Year	Real Property & Personal Property		Total Taxable Value
	Personal Attached Taxable Value	(Unattached) Taxable Value	
2010 ^	\$ 1,571,488	\$ -	\$ 1,571,488
2011	153,701	36,236	189,937
2012	132,286	36,579	168,865
2013	112,584	279	112,863
2014	119,533	1,337	120,870

* First year data available as district was created in FY 2009

^ First year data available as district was created in FY 2010

CITY OF MISSOULA, MONTANA
COMPONENT UNIT MISSOULA REDEVELOPMENT AGENCY
TAXABLE VALUE OF DISTRICTS COMPARED TO CITY
For the Last Ten Fiscal Years

Urban Renewal District II				
Fiscal Year	Total City Taxable Value	Total Taxable Value Within Tax Increment District	Incremental Taxable Value Within Tax Increment District	Tax Increment as Percentage of City's Taxable Value
2007	\$ 99,332,558	\$ 2,971,734	\$ 1,111,911	1.1%
2008	103,000,436	3,061,304	1,201,481	1.2%
2009	106,334,891	3,520,504	1,392,741	1.3%
2010	107,159,214	3,620,415	1,760,592	1.6%
2011	111,474,037	3,752,007	1,892,184	1.7%
2012	112,993,774	3,680,706	1,820,883	1.6%
2013	112,697,955	3,641,946	1,782,123	1.6%
2014	109,336,360	3,685,963	1,826,140	1.7%
2015	112,624,034	3,802,603	1,942,780	1.7%
2016	115,855,770	4,297,267	2,031,759	1.8%

Urban Renewal District III				
Fiscal Year	Total City Taxable Value	Total Taxable Value Within Tax Increment District	Incremental Taxable Value Within Tax Increment District	Tax Increment as Percentage of City's Taxable Value
2007	\$ 99,332,558	\$ 7,698,594	\$ 694,248	0.7%
2008	103,000,436	7,712,803	708,457	0.7%
2009	106,334,891	8,937,450	1,933,104	1.8%
2010	107,159,214	9,541,856	2,537,510	2.4%
2011	111,474,037	9,508,130	2,503,784	2.2%
2012	112,993,774	9,671,079	2,666,733	2.4%
2013	112,697,955	9,179,048	2,174,702	1.9%
2014	109,336,360	9,358,441	2,355,095	2.2%
2015	112,624,034	8,470,753	1,466,407	1.3%
2016	115,855,770	4,297,267	1,766,703	1.5%

Front Street URD				
Fiscal Year	Total City Taxable Value	Total Taxable Value Within Tax Increment District	Incremental Taxable Value Within Tax Increment District	Tax Increment as Percentage of City's Taxable Value
2009 *	\$106,334,891	\$ 1,413,675	\$ 640	0.0%
2010	107,159,214	1,622,092	209,057	0.2%
2011	111,474,037	2,229,992	816,957	0.7%
2012	112,993,774	2,029,197	616,159	0.5%
2013	112,697,955	1,987,146	574,111	0.5%
2014	109,336,360	1,964,237	551,202	0.5%
2015	112,624,034	1,950,387	537,352	0.5%
2016	115,855,770	4,297,267	426,064	0.4%

Riverfront Triangle				
Fiscal Year	Total City Taxable Value	Total Taxable Value Within Tax Increment District	Incremental Taxable Value Within Tax Increment District	Tax Increment as Percentage of City's Taxable Value
2010 ^	\$104,408,018	\$ 133,871	\$ -	0.0%
2011	111,474,037	189,937	32,079	0.0%
2012	112,993,774	168,865	11,007	0.0%
2013	112,697,955	112,863	-	0.0%
2014	109,336,360	116,994	-	0.0%
2015	112,624,034	120,870	-	0.0%
2016	115,855,770	4,297,267	-	0.0%

Hellgate Urban Renewal District #				
Fiscal Year	Total City Taxable Value	Total Taxable Value Within Tax Increment District	Incremental Taxable Value Within Tax Increment District	Tax Increment as Percentage of City's Taxable Value
2016 #	\$115,855,770	\$ 960,528	\$ -	0.0%

North Reserve / Scott Street Urban Renewal District #				
Fiscal Year	Total City Taxable Value	Total Taxable Value Within Tax Increment District	Incremental Taxable Value Within Tax Increment District	Tax Increment as Percentage of City's Taxable Value
2016 #	115,855,770	1,563,946	72,741	0.1%

* First year data available as district was created in FY 2009

^ First year data available as district was created in FY 2010

First year data available as district was created in FY 2016

Source: City of Missoula and Missoula County Assessor's Office

STATISTICAL SECTION

CITY OF MISSOULA, MONTANA COMPONENT UNIT MISSOULA REDEVELOPMENT AGENCY TRENDS IN PROPERTY VALUATION IN CITY For the Last Ten Fiscal Years

Fiscal Year	City Appraised Value	City Taxable Value (includes district)	Incremental Taxable Value District II	Incremental Taxable Value District III	Incremental Taxable Value Front Street URD	Incremental Taxable Value Riverfront Triangle URD	Hellgate Urban Renewal District	North Reserve / Scott Street Urban Renewal District	City Taxable Value (without district)
2007	\$ 3,195,587,513	\$ 101,138,717	\$ 1,111,911	\$ 694,248	\$ -	\$ -	\$ -	\$ -	\$ 99,332,558
2008	3,369,424,008	103,000,436	1,201,481	708,457	-	-	-	-	101,090,498
2009	3,412,313,560	106,334,891	1,392,741	1,933,104	640	-	-	-	103,008,406
2010	3,684,720,974	107,159,214	1,760,592	2,537,510	209,057	-	-	-	102,652,055
2011	3,965,146,053	111,474,037	1,892,184	2,503,784	816,957	32,079	-	-	106,229,033
2012	4,140,685,284	112,993,774	1,820,883	2,666,733	616,159	11,007	-	-	107,878,992
2013	4,110,699,383	112,697,955	1,782,123	2,174,702	574,111	-	-	-	108,167,019
2014	4,305,020,382	114,068,797	1,826,140	2,355,095	551,202	-	-	-	109,336,360
2015	4,406,017,003	112,624,034	1,942,780	1,466,407	537,352	-	-	-	108,677,495
2016	7,303,138,213	115,855,770	2,031,759	1,766,703	426,064	-	-	72,741	111,558,503

Source: City of Missoula and Missoula County Assessor's Office

**CITY OF MISSOULA, MONTANA
MISSOULA REDEVELOPMENT AGENCY
COMPONENT UNIT TAX INCREMENT REVENUE BOND COVERAGE
URD II: MILLSITE \$3.6M BONDS**

FISCAL YEAR	PROJECTED PLEDGED TAX INCREMENT	MAXIMUM PROJECTED DEBT	COVERAGE
2007			
With State Entitlement	\$ 1,033,421	\$ 250,500	413%
Without State Entitlement	749,799	250,500	299%
2008			
With State Entitlement	1,129,477	250,500	451%
Without State Entitlement	845,855	250,500	338%
2009			
With State Entitlement	1,302,970	250,400	520%
Without State Entitlement	1,019,348	250,400	407%
2010			
With State Entitlement	1,369,859	250,400	547%
Without State Entitlement	1,113,237	250,400	445%
2011			
With State Entitlement	1,493,995	250,400	597%
Without State Entitlement	1,210,373	250,400	483%
2012			
With State Entitlement	1,429,000 A	250,400 B	571%
Without State Entitlement	1,173,740	250,400	469%
2013			
With State Entitlement	1,474,944 C	250,400	589%
Without State Entitlement	1,157,656	250,400	462%
2014			
With State Entitlement	1,522,881	676,428 D	225%
Without State Entitlement	1,208,093	676,428	179%
2015			
With State Entitlement	1,668,283 E	676,428	247%
Without State Entitlement	1,225,692	676,428	181%
2016			
With State Entitlement	1,713,113	676,428	253%
Without State Entitlement	1,270,522	676,428	188%

A State Entitlement amount reduced by 10% to \$255,260 by 2011 Legislative action

B Civic Stadium Note issued February 2012 is subordinate to the Series 2006 bonds so not included in Max. Projected DS. Civic Stadium DS is \$500K Max Annual through FY15.

C Personal Property Tax Reduction Reimbursement approved by 2011 Legislature under SB372. Annual Reimbursement is \$62,028.

D Series 2013 \$5.75M Bond issued March 2013 on parity with Series 2006 Bond. Max. Annual DS \$426,028

E Personal Property Tax Reduction Reimbursement approved by 2013 Legislature under SB96. Annual Reimbursement is \$125,303.

Source: City of Missoula Annual Reports

STATISTICAL SECTION

CITY OF MISSOULA, MONTANA PROPERTY TAX LEVIES IN THE URBAN RENEWAL DISTRICT II Last Ten Fiscal Years

	FY '07	FY '08	FY '09	FY '10	FY '11	FY '12	FY '13	FY '14	FY '15	FY '16
Taxing Authority	2006/07	2007/08	2008/09	2009/10	2010/11	2011/12	2012/13	2013/14	2014/15	2015/16
State University Mill Levy	6.00	6.00	6.00	6.00	6.00	6.00	6.00	6.00	6.00	6.00
State Statewide School Equalization	25.91	25.39	25.44	26.92	26.60	26.28	26.55	26.15	19.23	18.78
General Countywide School Levy	67.53	66.04	67.17	54.71	53.28	51.18	51.46	52.68	50.80	49.00
Missoula County	86.56	86.44	89.27	72.66	72.00	72.24	74.51	75.71	76.98	78.86
Missoula Highschool District	53.25	48.91	50.33	39.98	38.44	38.76	36.94	36.36	34.99	35.27
City of Missoula	132.60	134.71	141.49	116.33	116.17	118.27	123.75	122.64	118.10	118.70
Urban Transportation District	9.01	9.28	9.45	8.52	8.47	8.97	10.02	10.60	16.47	19.00
Increment 1-1C *	256.84	266.50	270.27	353.75	359.55	372.64	369.31	387.47	419.86	440.51
Subtotal	637.70	643.27	659.42	678.87	680.51	694.34	698.54	717.61	742.43	766.12
School District 1-1C	97.32	92.32	89.20	74.65	72.88	73.61	72.88	75.01	72.29	70.29
Total levies for property in the District lying within School District 1-1C	735.02	735.59	748.62	753.52	753.39	767.95	771.42	792.62	814.72	836.41

	FY '07	FY '08	FY '09	FY '10	FY '11	FY '12	FY '13	FY '14	FY '15	FY '16
Taxing Authority	2006/07	2007/08	2008/09	2009/10	2010/11	2011/12	2012/13	2013/14	2014/15	2015/16
State University Mill Levy	6.00	6.00	6.00	6.00	6.00	6.00	6.00	6.00	6.00	6.00
State Statewide School Equalization	21.46	20.06	18.77	24.90	22.73	25.87	25.85	26.37	21.37	20.96
General Countywide School Levy	55.95	52.19	49.56	49.44	43.27	50.14	49.71	53.27	56.44	54.68
Missoula County	71.71	68.31	65.86	65.66	58.47	70.77	71.98	76.55	85.54	88.01
Missoula Highschool District	44.11	38.65	37.13	36.13	31.21	37.97	35.69	36.76	38.88	39.36
City of Missoula	109.86	106.45	104.38	105.12	94.34	115.86	119.55	124.01	131.23	132.48
Urban Transportation District	7.46	7.33	6.97	7.70	6.88	8.79	9.68	10.72	18.31	21.21
Increment 4-1C *	335.27	355.00	402.98	398.69	441.03	384.35	384.05	382.13	378.47	387.52
Subtotal	651.82	653.99	691.65	693.64	703.93	699.75	702.51	715.81	736.24	750.22
School District 4-1C	77.67	64.27	73.61	74.27	66.18	75.98	71.89	74.84	82.45	69.94
Total levies for property in the District lying within School District	729.49	718.26	765.26	767.91	770.11	775.73	774.40	790.65	818.69	820.16

* Note: Tax Increment districts are not taxing authorities and do not levy taxes, i.e. levy mills. Total incremental taxable value can be viewed as a percentage of total taxable value in a district, from information provided by the Montana Department of Revenue. For purposes of disclosure, this report shows that same percentage broken down as a portion of the total mills levied in the district.

STATISTICAL SECTION

MISSOULA COUNTY Urban Renewal District II - Top 10 Taxpayers Tax Year 2015 (FY16)

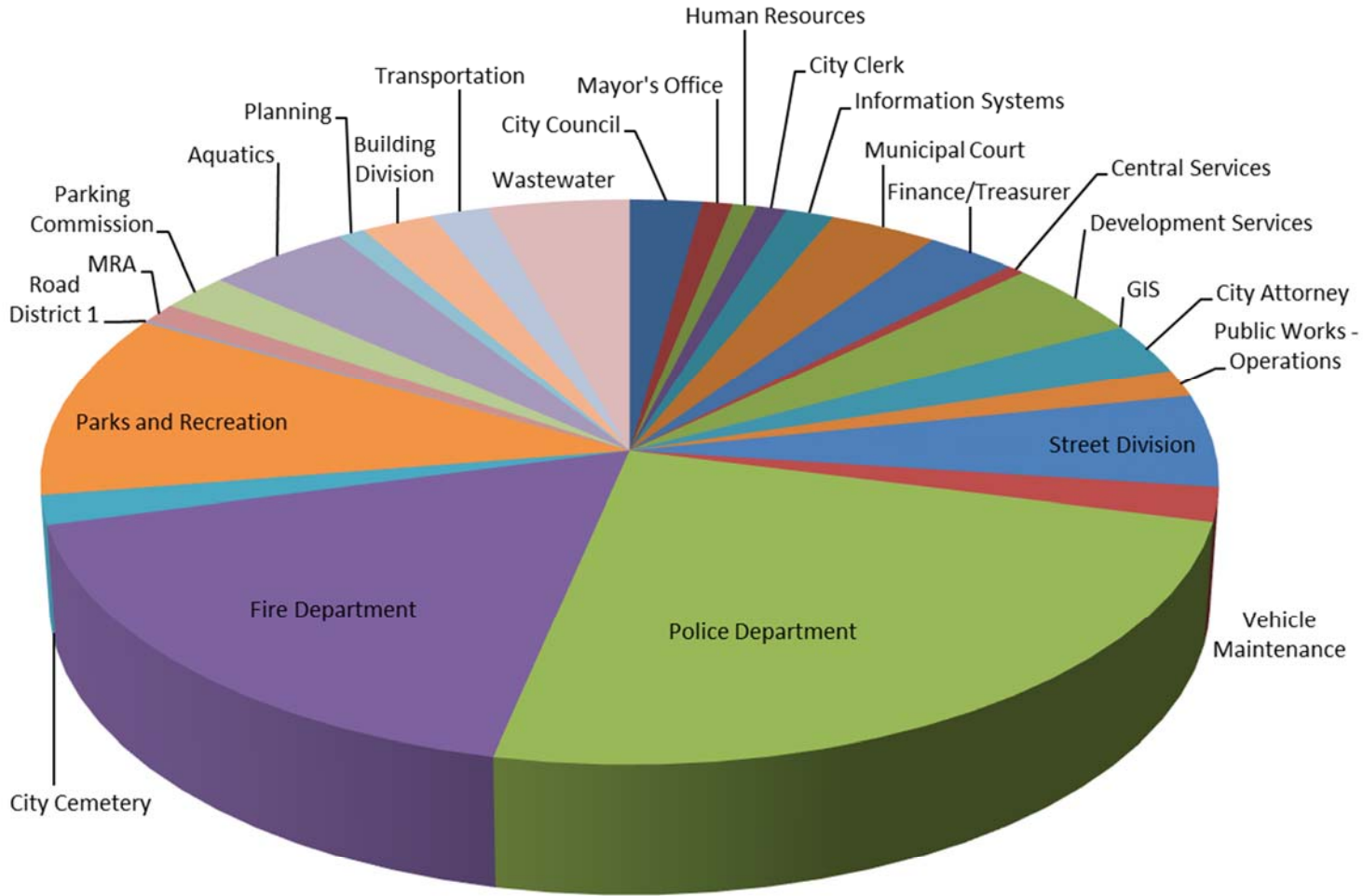
	Taxpayer	Type of Business	2015 Total Tax	2015 Market Value	2015 Taxable Value
1	Montana Apartment Company	Residential	\$ 196,335	\$ 16,839,200	\$ 227,329
2	Mountain Water Co	Water Utility	141,982	10,516,542	165,052
3	Spirit Master Funding IX LLC	Grocery Store	111,286	6,600,005	124,741 *
4	Nutritional Laboratories	Food Supplement Manufacturer	107,577	7,636,827	128,122
5	Blackfoot Telephone	Co-op Communications	107,412	4,235,440	127,064
6	Good Food Store	Commercial Grocery	106,564	6,716,080	121,398
7	Millsite Revitalization Project LLC	Developer	87,624	5,340,873	100,944
8	Missoula Electric Coop	Co-op Electric Utility	80,168	3,160,825	94,825
9	Ashlyn Place	Residential	62,926	5,397,800	72,870
10	Like-Nu Auto Services	Automotive Repair	61,179	3,820,364	72,205
		Total	<u>\$ 1,063,053</u>	<u>\$ 70,263,956</u>	<u>\$ 1,234,550</u>

* Excludes personal property under different Tax ID and still under Safeway Inc. #2619

**CITY OF MISSOULA
SCHEDULE OF FTE TRENDS
FY 2012 – 2016**

	2012	2013	2014	2015	2016
	# FTE	# FTE	# FTE	#FTE	Adopted
City Departments					
City Council	12.00	12.00	12.00	12.00	12.00
Mayor's Office	5.00	5.00	5.00	5.00	5.00
Human Resources	4.00	4.00	4.00	4.00	4.00
City Clerk	4.00	4.00	4.00	5.00	5.00
Information Systems	6.00	6.00	6.00	6.00	8.00
Municipal Court	13.75	16.75	16.85	17.85	17.85
Finance/Treasurer	16.00	16.00	15.50	15.00	15.00
Central Services	-	-	1.50	3.00	3.00
Development Services	-	33.71	35.21	23.50	23.75
GIS	-	-	3.00	3.00	-
City Attorney	14.00	15.00	16.00	16.00	16.00
Public Works - Operations	27.52	11.42	8.42	8.42	8.42
Street Division	28.54	28.79	28.79	28.79	28.79
Vehicle Maintenance	10.50	10.50	11.50	10.50	10.50
Police Department	117.00	122.00	126.00	130.00	132.00
Fire Department	95.00	95.00	95.00	95.00	95.00
City Cemetery	8.92	8.92	8.92	8.92	8.91
Parks and Recreation	54.42	57.74	55.80	57.00	57.59
Total General	416.65	446.83	453.49	448.98	450.81
General Fund % Increase	1.34%	7.24%	1.49%	-0.99%	0.41%
Special Revenue Funds					
Planning	-	-	-	4.50	4.50
Building Division	9.00	9.00	10.99	11.10	12.00
Road District 1	-	0.25	0.25	0.25	0.75
Parks District 1	-	1.20	1.20	1.98	2.73
Transportation	-	-	-	8.40	9.57
Total Special District	9.00	10.45	12.44	26.23	29.55
Enterprise Funds					
Aquatics	26.81	26.81	26.81	25.45	23.88
MRA	6.00	6.00	6.00	6.00	6.00
Wastewater	21.50	21.50	22.50	22.50	23.50
Parking Commission	11.33	11.50	11.50	11.50	11.50
Total Enterprise	65.64	65.81	66.81	65.45	64.88
Non-General Fund % Increase	-12.22%	2.17%	3.92%	15.68%	3.00%
Total for City Departments	491.29	523.09	532.74	540.66	545.24

City FTE Count by Department - FY 2016



City FTE Count by Function - FY2016

