

Partner to Partner

Missoula Parks and Recreation • December, 2014



Who Are We?

Partners In Parks are Missoula residents, businesses, organizations who support the work of the Missoula Parks and Recreation Department.

Together, we invest in our future by supporting Missoula's kids, enhancing our quality of life, and developing the parks, trails and open space that make Missoula a desirable place to live and do business.

Partners In Parks supports the efforts of the Parks and Recreation department by providing recreation grants for low-income families, assisting the department in building new parks and trails and enhancing existing facilities, and volunteering our time to help with Parks and Recreation projects and recreation programs.

How You Can Help

Donate

Visit www.missoulaparks.org today or phone 721-PARK to donate to Partners In Parks.

Ft. Missoula Regional Park
Contact Parks and Recreation Director Donna Gaukler if you are interested in naming rights related to FMRP. 406-552-6265, dgaukler@ci.missoula.mt.us

Volunteer

Help with a park project or recreation program by phoning Meg Rogosienski, Recreation Specialist, at 552-6271.

Partners in Parks By The Numbers

In addition to the funds below, special thanks and recognition to key partners who have successfully met major capital campaign goals!

- **Silver Summit Playground \$450,000**
- **Grant Creek Trail \$180,000**

Special thanks to Ruth Havican and Karen Holcomb, for their 10th annual donation to Share The Fun Youth Recreation Grants.

\$37,174

Partners In Parks Donations to parks programs and facilities.
(Plus capital campaigns as above.)



\$16,948

Donations to Share The Fun Youth Recreation Grants.



Plus a \$10,000 contribution from Missoula County.

2386 hours

456 individuals

Hours volunteered in City parks, on trails and open space, in recreation programs and special events.

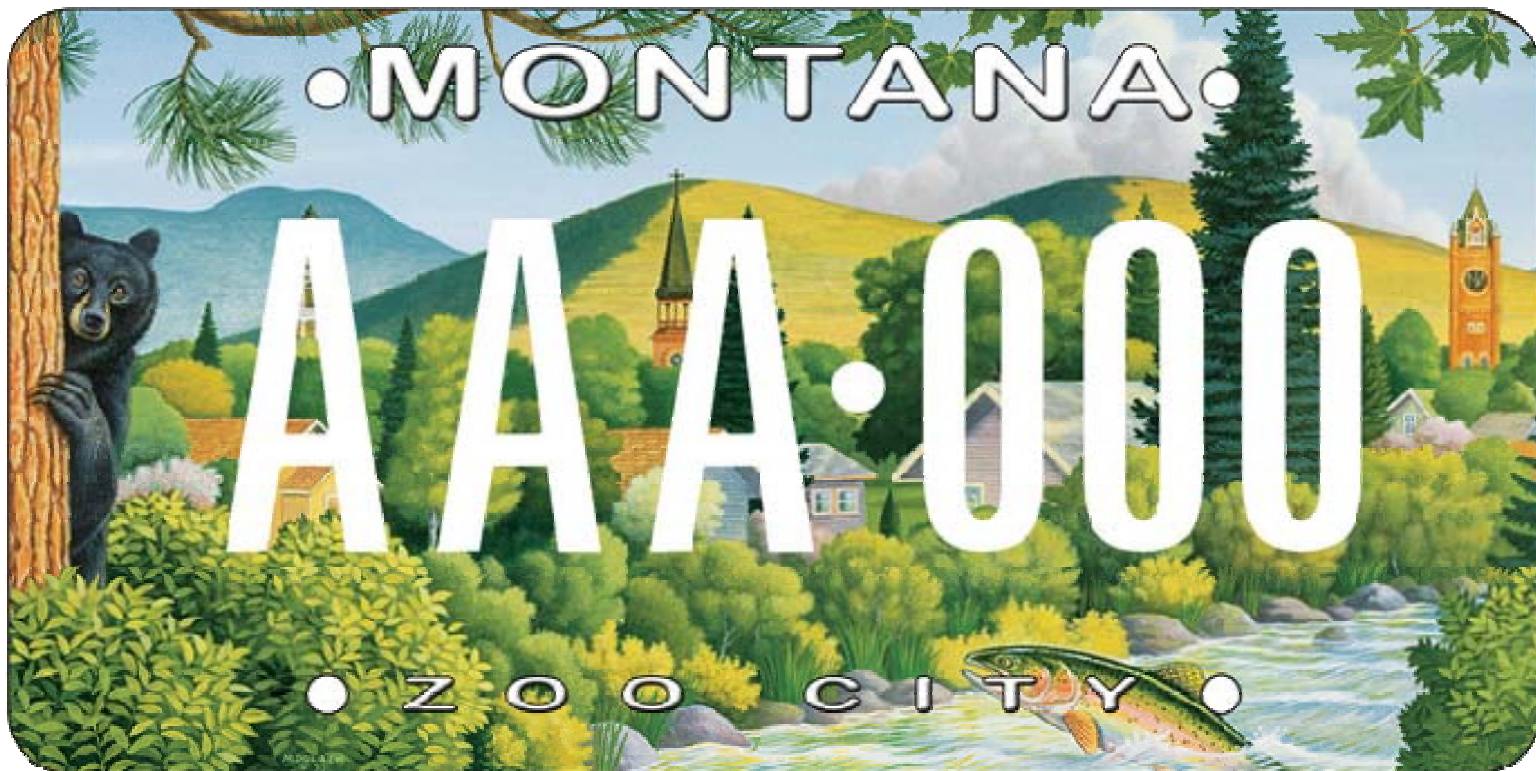


538 children

and adults

Received Share The Fun financial assistance for recreation and aquatics programs.





Step Up To The Plate! Show your support with the Parks & Recreation license plate. Available at DMV.



Many thanks to these great organizations who volunteered with Parks and Recreation in 2014!

Big Sky Bikes
 Big Sky High School
 Dennis and Phyllis Washington Foundation
 Five Valleys Land Trust
 Free Cycles Community Shop
 Hellgate High School
 Hugh O'Brian Youth Leadership (HOBY)
 Loyola Sacred Heart High School
 Missoula Aging Services
 Missoula Developmental Services
 Missoula Indian Center
 Missoula Organization of Realtors
 Missoula Rose Society
 Missoula Water Quality Advisory Council
 Montana Conservation Corp
 Montana Organization of Geocachers
 Montana Skate Park Association
 Montana Trails Recreation and Parks Association
 – University of Montana Chapter
 Mountain Bike Missoula
 North Missoula Community Development Corp
 Opportunity Resources

Parks and Recreation Teen Workcreation Program
 Payne West Insurance
 Potomac School
 Project Smile University of Montana Chapter
 Radtke Youth Homes
 Rotartact Club of University of Montana
 Sentinel High School
 Sigma Alpha Epsilon
 Spectrum Aquatics
 Sussex School
 The Clark Fork Coalition
 The Girl Scouts
 The Playground Project
 The Rotary Club
 Trees For Missoula
 TriO Upward Bound – University of Montana
 University of Montana Mansfield Center
 University of Montana Recreation Club
 University of Montana Society of American Foresters
 Valley Christian Academy
 Walmart

Thank you to all the individuals who gave substantial volunteer time on parks projects and conservation.

Chris Bacon
 Matt Barnes
 Bill Bevis
 Kathy Heffernan
 Kristi Kusche
 Charlotte Langer
 Steve Loken
 Jim McFarlane
 Jenny Montgomery
 Bob Oaks
 Jerry Patasek
 Karen Sippy
 Ryan Whicher

Special thanks to those who give their time informally by picking up litter, watering plants, and assisting conservation efforts. Thanks for making Missoula a better place to live!



Many thanks to our generous Partners In Parks!

Over \$5000

All-Abilities Playground Project
Grant Creek Trails Association
Ruth Havican and Karen Holcomb
Kiwanis Club of Missoula
Little Grizzly Sports
REI

\$4999 - \$3000

Community Medical Center
Exact Image
Montana Radio Company

\$2999 - \$1500

CXC Wisconsin
Gallagher Western Charitable Foundation
Snowbowl Ski Patrol

\$1499 and under

1st Interstate Bank
A Carousel for Missoula
ACE Hardware
Advantage Tennis
Adventure Source
AJ Frozen Treats Inc.
Albertsons
Axis Physical Therapy
Bear Aware
Betty's Divine
Black Coffee Roasters
Bob Wards
Buffalo Wild Wings
Caras Nursery
Costco

Theresa and Randy Cox
The Depot
Discovery Dental Group
Finn and Porter
First Security Bank
Garden City Flyers
Garden City Harvest
Donna Gaukler
Good Food Store
Grant Creek Kiwanis
Great Harvest
Hot-Woods LLC
Jak Enterprises - KornUtopia
JT Specialties
Labs "R" It
Lawyer Nursery
Les Schwab Tire Centers
Let's Move! Missoula
Liquid Planet
Loomis Ventures - dba Baskin-Robbins
Lost Trail Ski Resort
Marchies Nursery
Marshall Mountain
McDonalds (Kyong, LLC)
Merry Pawpins
Missoula City-County Health Dept.
Missoula Downtown Association
Missoula Federal Credit Union
Missoula Fire Department
Missoula Pediatric Dentistry
Missoula Pet Au Pair
Missoulian Angler
Montana Ace Hardware
Montana Coffee Express/Valley Vending

From Our Director

Through Partners In Parks we bring residents together, create places for making memories and economic vitality, and grow healthy kids while nurturing our seniors and all citizens. Please consider joining the growing efforts to make Missoula an even better place to live, work and play. Thank you!
*Donna Gaukler, Director
Missoula Parks and Recreation, 552-6265
dgaukler@ci.missoula.mt.us*

Montana Rail Link
MonTECH
Mountain Water Company
Orange Street Food Farm
Papa Johns
Pizza Hut
Polka Dot Patties
Pruyn Veterinary Hospital
Republic Services
Runners Edge
Scott's EQ Muffler
Sportsman's Warehouse
UM Grizzly Athletics
UM College of Forestry
USFS Smokey the Bear
Veterinary Emergency & Specialty Group PLLC
Western Montana Clinic
Janice & Cara Wherley
Wild Skies Raptor Center
Mike Williams Photography
Wind River Tails and Trails
Linda and Jon Yearous
Zootown Surfers