

FY25 Budget Presentation

June 12, 2024

Jeremy Keene, Director

Rebecca Anciaux, Business Finance Manager

Logan McInnis, Deputy Director, Utilities

Brian Hensel, Deputy Director, Streets

Ross Mollenhauer, Engineering Manager

Aaron Wilson, Transportation Planning Manager



AGENDA

1. FY25 Budget Summary (10 min)
2. New Requests – Road District (30 min)
3. New Requests – Utilities (30 min)
4. Community Investment Program (60 min)
5. Utility Rates (10 min)

MISSION

Public Works & Mobility's mission is to deliver the high-quality public infrastructure, transportation networks, utilities, and core services that promote health, safety, and quality of life for Missoula residents and visitors.

STRATEGIC PLANNING

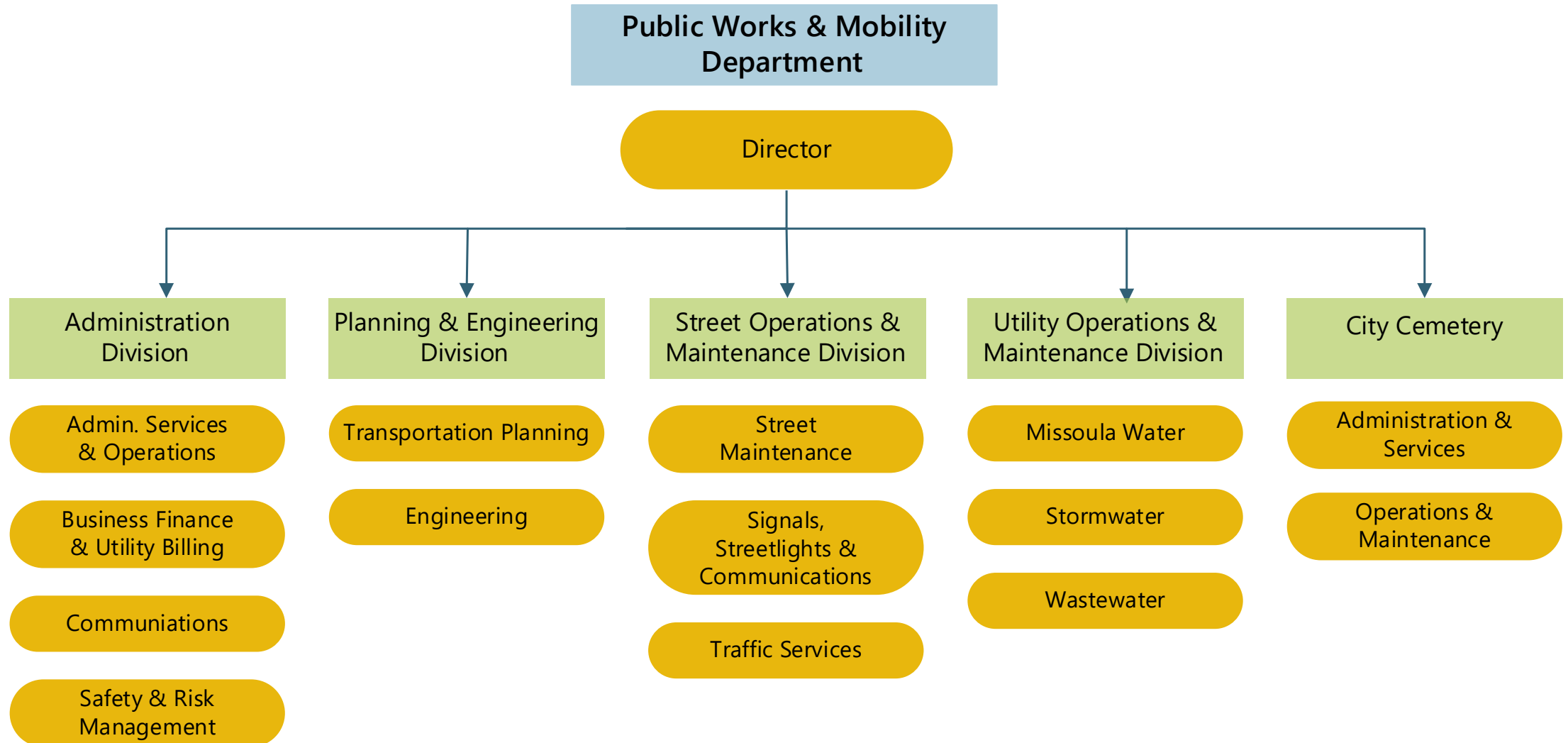
City of Missoula **Guiding Principles**

Trust
Opportunity
Inclusion
Environment
Economy



Service
Safety
Integrity
Accessibility
Sustainability
Affordability
Accountability
Equity
Efficiency
Fiscal Responsibility

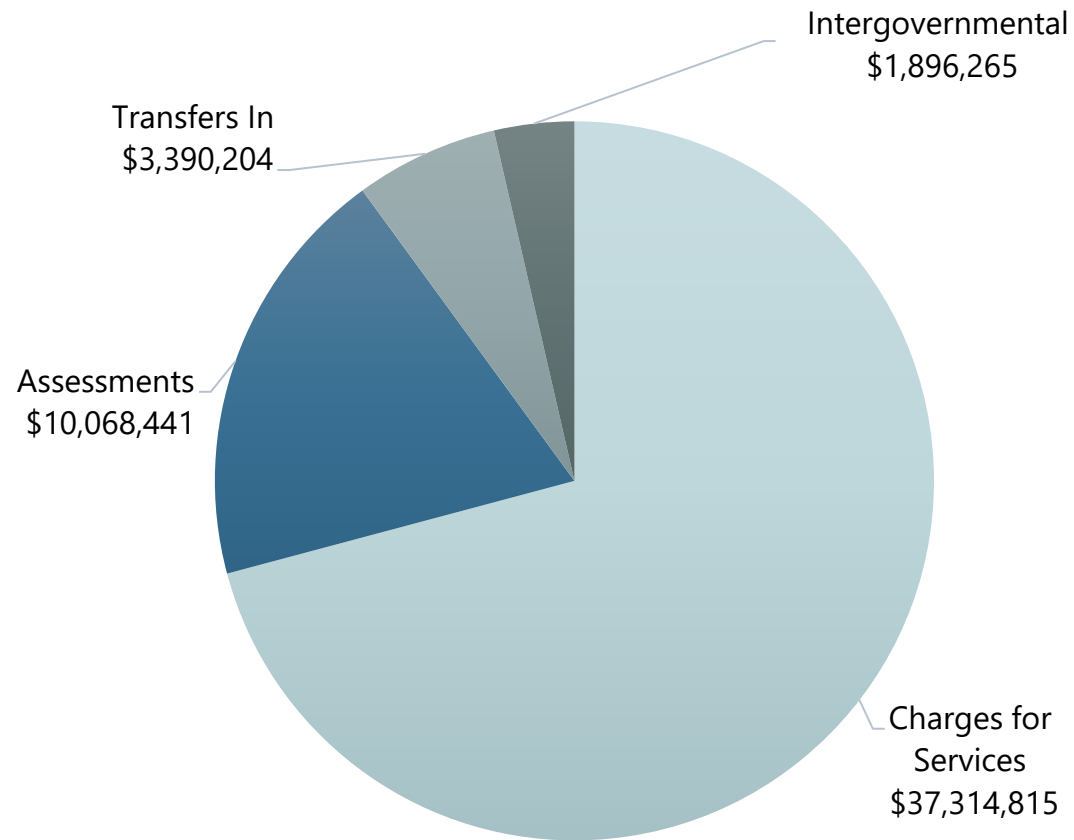
ORGANIZATION



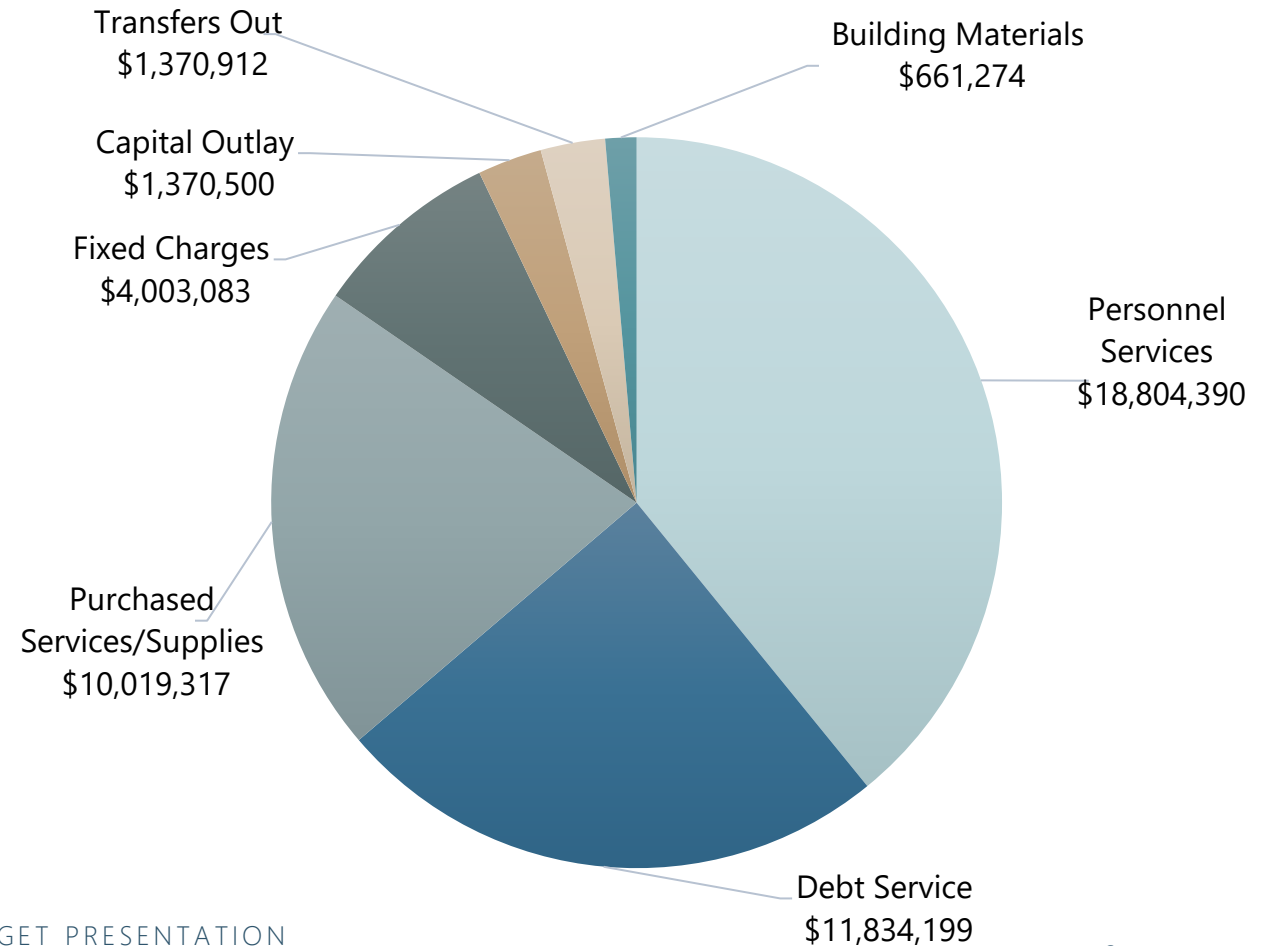
FY25 BUDGET SUMMARY

DEPARTMENT BUDGET

Revenue — \$52,669,725



Expenditures — \$48,063,675



PROGRAM ACTIVITY DESCRIPTIONS

2512 Road District #1 Fund

- Public Works Administration
 - 430100 Admin
- Planning & Engineering
 - 431400 Engineering
 - 430262 Sidewalk Construction Subsidy
 - 490200 Revenue Bond Debt Service
- Streets Operations & Maintenance
 - 430210 Streets Admin
 - 430230 Streets Maintenance
 - 430251 Snow/Ice Control
 - 430252 Street Cleaning
 - 430263 Street Lighting
 - 430264 Traffic Signal Maintenance
 - 430265 Signing & Striping
 - 430270 Communications Maintenance
 - 431200 Flood Control Maintenance
- Cemetery
 - 430910 Cemetery Admin
 - 430920 Cemetery Facilities Ac
 - 430930 Cemetery Grounds Maintenance
 - 430940 Cemetery Burials
- Other Road District activities include Reimbursable Services, Capital Equipment Debt Service, Grant Subsidy (local match), and Gas Tax

			This activity is charged with expenditures for the general administrative direction of the public works department.	
Public Works - Road District #1 Department Budget				
FUND: Special Revenue - PW Road District #1				
ACCOUNTING CODE: 2512.280 & 320				
ACTIVITY NAME:			Public Works Administration	
ACTIVITY CODE:			430100	
	Grand Total Baseline	Grand Total Baseline + Changes	Baseline	Proposed Changes

Follow link to:

[www.ci.missoula.mt.us/DocumentCenter/View/72314/
Public-Works-and-Mobility-Line-Item-Budget](http://www.ci.missoula.mt.us/DocumentCenter/View/72314/Public-Works-and-Mobility-Line-Item-Budget)

PROGRAM ACTIVITY DESCRIPTIONS (CONT.)

2955 Transportation Special Revenue Fund

- 411070 MPO
- 411079 Bike/Ped CMAQ
- 411080 Missoula In Motion
- 430255 Bike/Ped Program & Trails

5120 Water Utility Enterprise Fund

- 430510 Water Admin
- 430520 Water Facilities Maintenance
- 430530 Water Production
- 430550 Water Distribution

Other Water Activities include Capital Projects and One-Time expenditures

5311 Wastewater Enterprise Fund

- 430610 Wastewater Admin
- 430630 Wastewater Collection & Transmission
- 430640 Wastewater Treatment & Disposal
- 430650 Wastewater Lab & Testing
- 430660 Compost

Other Wastewater activities include Capital Projects and One-Time Expenditures

5450 Stormwater Enterprise Fund

- 430210 Stormwater Admin
- 430246 Stormwater Maintenance
- 431200 Stormwater Flood Control

Other Stormwater activities include Capital Projects and One-Time Expenditures

FY25 NEW REQUESTS





ROAD DISTRICT #1

FY25 NEW REQUESTS BY FUND

ROAD DISTRICT #1

Inflationary Adjustments for Purchased Materials and Services

- Baseline adjustments of 7% are being requested for Operating Supplies, Gasoline, Contract Services, and Building Materials and 10% for all Repairs and Maintenance lines.
- \$115,164 from Road District property assessment increase



Street Maintenance crew completes paving project

Departmental Goal: Maintain core levels of service to ensure public safety, health, and well-being.

FY25 NEW REQUESTS BY FUND

ROAD DISTRICT #1

New Communications Shop FTE

- Backlog of 33 new police vehicles expected over next 2 years (install computer equipment, lights, radios)
- Increased demand for installation and maintenance of flashing (RRFB) ped crossings, City-owned streetlights, and traffic signals
- Retirement transition planning
- \$105,786 from Road District property assessment increase



*Sign Shop crew installs RRFB on 3rd St.
west of Russell St.*

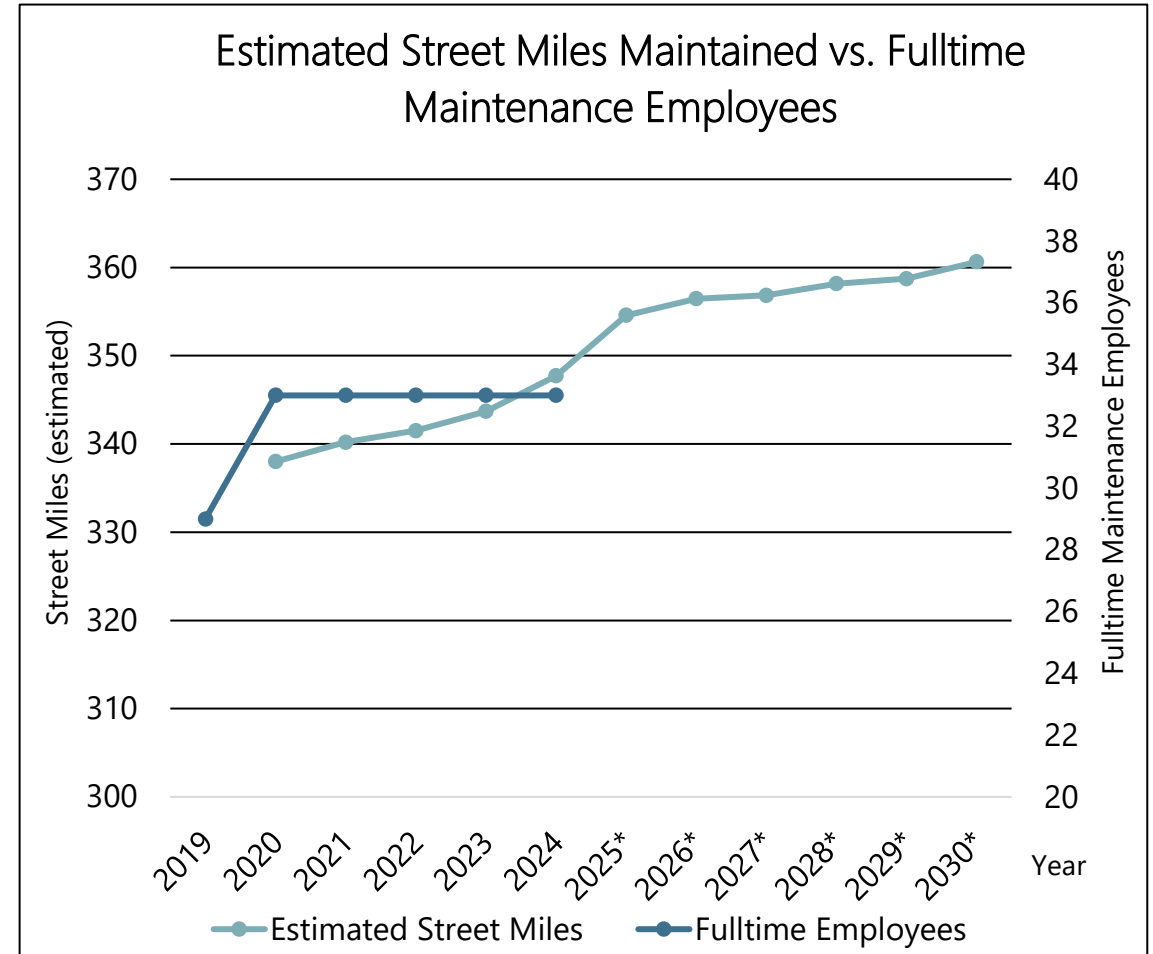
Departmental Goal: Maintain core levels of service to ensure public safety, health, and well-being.

FY25 NEW REQUESTS BY FUND

ROAD DISTRICT #1

Three New Street Maintenance FTEs

- Three additional FTEs plus Equipment
- No staff added since 2019
- Address growing number of street miles (3 to 5 new street miles per year)
- Maintain core levels of service for snow operations, street sweeping, pavement maintenance, storm drain cleaning, and ADA sidewalk upgrades
- \$536,253 ongoing from Road District property assessment increase
- \$229,500 one-time through equipment financing



Departmental Goal: Maintain core levels of service to ensure public safety, health, and well-being.

FY25 NEW REQUESTS BY FUND

ROAD DISTRICT #1

Deicer Tanks

- Four 10,000-gallon bulk deicer storage tanks
- Replace 3 failing liquid deicer tanks and increase storage capacity to treat added street miles
- Existing tanks are 21 years old (expected life is 15 to 20 years)
- \$58,000 from Road District Fund Balance



Deicer application

Departmental Goal: Maintain core levels of service to ensure public safety, health, and well-being.

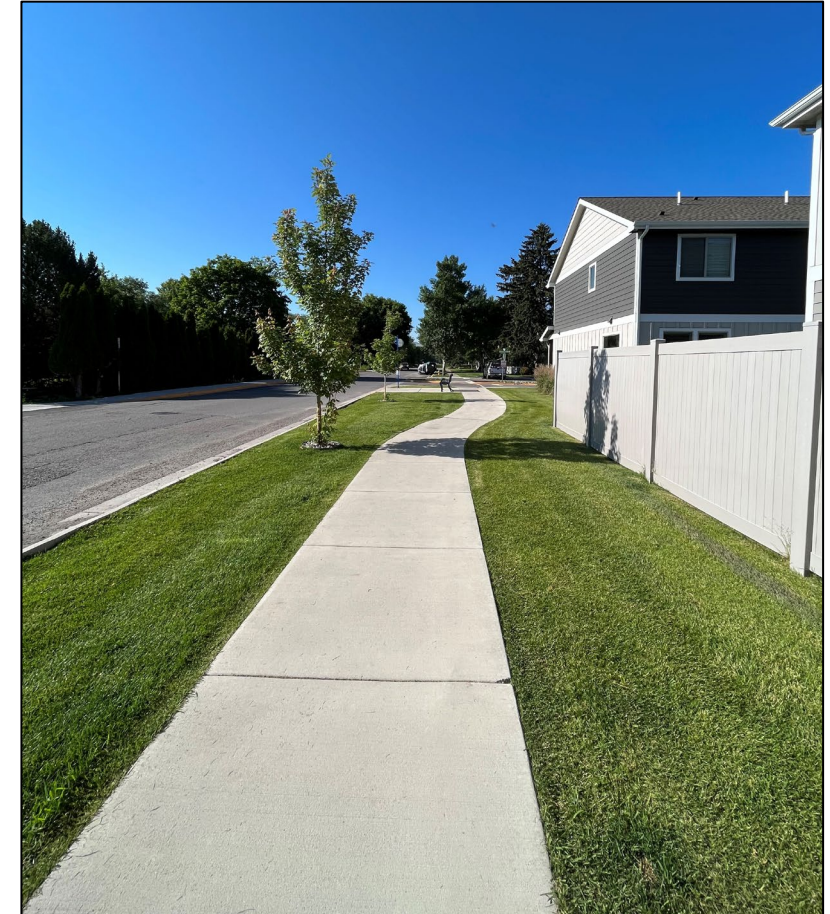
FY25 NEW REQUESTS BY FUND

ROAD DISTRICT #1

Sidewalk Program Modifications

- Reduce cost burden on certain property owners in line with City's goals for equity and affordability
- Increase the threshold for deferrals on income-qualified properties from 80% to 120% AMI
- Lower threshold for high-assessment deferrals from \$6,000 to \$3,500
- Allows subsidy to apply to new single-dwelling, duplex, and ADU projects with postponements.
- \$60,000 from Road District property assessment increase

Departmental Goal: Improve equity and housing affordability.



Eaton St. Phase 1 sidewalk and boulevard improvements

FY25 NEW REQUESTS BY FUND

MISSOULA CITY CEMETERY

Utility Cart

- Used for grounds upkeep
- Current cart is 22 years old and requires a lot of maintenance to keep it running.
- \$12,000 from Cemetery Reserve Fund



Example of requested utility cart

Departmental Goal: Maintain core levels of service to ensure public safety, health, and well-being.

FY25 NEW REQUESTS BY FUND

MISSOULA CITY CEMETERY

Block Markers

- Existing block markers are deteriorated and no longer useful to cemetery guests
- New ones would be placed throughout the grounds
- \$7,000 from Cemetery Donation Fund



Examples of damaged and/or deteriorated block markers



Departmental Goal: Maintain core levels of service to ensure public safety, health, and well-being.

FY25 BUDGET REVENUES & EXPENSES BY FUND

ROAD DISTRICT #1

Road District Revenues	FY24 Updated Projection	FY25 Budget
Intergovernmental Revenues*	7,489	221,686
Charges for Service**	2,212,729	2,217,921
Assessments	9,534,764	10,068,441
Transfers In***	2,806,324	2,773,439
Total	\$14,616,979	\$15,281,487

Road District Expenses	FY24 Updated Projection	FY25 Budget
Personnel	7,637,339	8,284,450
Operating	3,603,697	3,953,912
Grants	10,780	10,780
Debt Service	984,669	907,096
Transfers Out***	665,167	756,140
Capital Outlay	1,435,617	1,123,500
Total	\$14,337,269	\$15,035,878

Road District includes Admin, Engineering, Streets, and Cemetery.

*Intergovernmental: Grants, MUTD, State contributions

**Charges for Service: Licenses, Permits, Special Contracts, State Maintenance Contract, Reimbursable Services

***Transfers: Operating, Flushing District, Proceeds from Capital Lease, Gas Tax (In) Operating

FY25 BUDGET REVENUES & EXPENSES BY FUND

TRANSPORTATION PLANNING

Transportation Revenues	FY24 Updated Projection	FY25 Budget
Intergovernmental Revenues/Grants	1,600,957	1,628,482
Local Match	27,283	32,193
Transfers In	177,815	218,288
Total	\$1,806,055	\$1,878,963

Transportation Expenses	FY24 Updated Projection	FY25 Budget
Personnel	821,507	1,026,949
Operating	527,806	630,812
Grants	276,802	221,202
Total	\$1,830,374	\$1,878,963

FY25 BUDGET REVENUES & EXPENSES BY FUND

CEMETERY RESERVE FUND

Cemetery Revenues	FY24 Updated Projection	FY25 Budget
Charges for Services	55,673	101,741
Total	\$55,673	\$101,741

Cemetery Expenses	FY24 Updated Projection	FY25 Budget
Operating	37,500	12,500
Improvements	195,000	235,000
Total	\$232,500	\$247,500

Remainder of Cemetery operating budget is included in Road District budget

QUESTIONS





UTILITIES

FY25 NEW REQUESTS BY FUND

WATER ENTERPRISE FUND

Wage Adjustments

- Needed to address wage equity across PWM staff
- Allows wages for non-union employees to remain competitive
- Wages will be in line with Wastewater for similar positions
- Proposed increase of 15% of market pay for Distribution and service, 11% increase in market for Production
- \$96,200 ongoing from Water Enterprise Fund



City Water Utility staff work with contractor to install new water pump

Departmental Goal: Achieve pay equity between similar work groups

FY25 NEW REQUESTS BY FUND

WATER ENTERPRISE FUND

Inflationary Increase for Chlorine	Inflationary Increase for Contract Labor
<ul style="list-style-type: none">• Is a 10% baseline adjustment• Over past 5 years, inflationary increases have averaged 10 to 14% per year• Needed to maintain service levels and compliance with DEQ requirements• \$57,109 ongoing	<ul style="list-style-type: none">• Is a 16% baseline adjustment• Paying prevailing wage for all contracted repair requests• \$68,973 ongoing
Funding source: Water Enterprise Fund	

Departmental Goal: Maintain compliance with federal regulations

FY25 NEW REQUESTS BY FUND

WATER ENTERPRISE FUND

Water Building Remodel

- Needed to provide adequate office space for Utility and Road District staff
- Water building has enough space when we include the adjacent Recompute Computers building
- Structural repairs to the Recompute Computers building needed
- Architectural evaluation
- \$120,000 (\$60,000 from Water Enterprise Fund + \$60,000 from Road District)



Thirteen Water Utility staff share this small office space most days

Departmental Goal: Provide adequate office space for utility and road district staff

FY25 NEW REQUESTS BY FUND

WATER ENTERPRISE FUND

Asset Management System

- The purpose of asset management is to minimize the life cycle cost of physical assets such as streets and utilities
- The system will develop and prioritize maintenance and replacement schedules for utility assets
- \$65,000 one-time cost for implementation
- \$35,000 ongoing for annual maintenance
- Funding sources: Water Enterprise Fund (\$45K initial, \$5K/year), Wastewater Enterprise Fund (\$10K initial, \$15K/yr), and Stormwater Enterprise Fund (\$10K initial, \$15K/yr)

Departmental Goal: More efficiently manage physical assets



Radio equipment used to communicate with water pump sites

FY25 NEW REQUESTS BY FUND

WATER ENTERPRISE FUND

Utility Engineer FTE

- Purpose is to design water main projects in house and build engineering capacity for all utilities
- Savings over contracting for engineering services on City CIPs
- Using in-house engineering on projects like water main replacements is common in other Montana cities, including Billings and Bozeman
- \$116,150 ongoing from Water Enterprise Fund



Examples of in-house engineering design that saved money and time

Departmental Goal: Provide high-quality, responsive and innovative services efficiently and effectively.

FY25 NEW REQUESTS BY FUND

WATER ENTERPRISE FUND

Service Line Loan Fund Increase

- Customer is responsible for maintaining or replacing their service line
- Customer lacks incentives to replace service line until it fails
- Typical replacement cost is \$10,000-\$15,000
- This request will increase funds available in loan fund
- Anticipate great demand for loan funds due to code revision to use partial loan forgiveness and increased use of leakage detection technology
- \$100,000 from Water Enterprise Fund. Customer loan payments replenish loan fund. Eventual savings on utility's power bills

Departmental Goal: Incentivize the customer to replace water service lines



Examples of broken water service lines



FY25 NEW REQUESTS BY FUND

WATER ENTERPRISE FUND

Service Line Replacement Crew

- More than 16,000 galvanized services in our system beyond useful life
- City crew could replace approximately 200 services per year. Customer would be responsible to repay the cost over time, except for the partial loan forgiveness
- City crew would be a limited resource, there would still be plenty of work available for private contractors
- \$117,000 ongoing for service crew foreman
- \$202,000 one-time expense for equipment
- Funding sources: Water Enterprise Fund + proceeds from Capital Lease. Offsetting revenue from customer payments.



Departmental Goal: Assist the customer with replacing their water service lines

FY25 BUDGET REVENUES & EXPENSES BY FUND

WATER ENTERPRISE FUND

Water Revenues	FY24 Updated Projection	FY25 Budget
Intergovernmental Revenues	2,757	2,757
Charges for Services	19,835,921	21,195,351
Debt Proceeds*	1,104,261	0
Transfers In	358,410	263,198
Total	\$21,301,349	\$21,461,306

Water Expenses	FY24 Updated Projection	FY25 Budget
Personnel	4,044,578	4,276,936
Operating	5,832,512	5,507,346
Debt Service	7,884,727	8,759,153
Grants	12,000	12,000
Transfers Out	100,000	100,000
Total	\$17,873,817	\$18,655,435

*No budget for debt proceeds. Budget amendment is done when funding is secured. Debt Proceeds are funds received from loans secured.

FY25 NEW REQUESTS BY FUND

WASTEWATER ENTERPRISE FUND

RRF Maintenance Manager FTE

- Needed to split existing Operations and Maintenance Manager position into two positions
- Maintenance workload leaves little time for operations duties
- Operations Manager needs to focus more time on plant operations to improve process control, plant performance, energy efficiency, and cost analyses
- \$118,500 ongoing from Wastewater Enterprise Fund



Resource Recovery Facility

Departmental Goal: Improve operations and maintenance at Resource Recovery Facility

FY25 NEW REQUESTS BY FUND

WASTEWATER ENTERPRISE FUND

Wastewater Project Manager FTE

- Needed to coordinate compost facility upgrade project, transition poplar farm to a new crop, and future expansion of wastewater land application to other properties
- Current staff cannot take on new duties in addition to current workload
- \$118,500 ongoing
- \$2,053 one-time for computer equipment
- Funding source: Wastewater Enterprise Fund



Christmas tree chipping at Garden City Compost

Departmental Goal: Provide adequate staffing for management of large wastewater projects

FY25 BUDGET REVENUES & EXPENSES BY FUND

WASTEWATER ENTERPRISE FUND

Wastewater Revenues	FY24 Updated Projection	FY 25 Budget	Wastewater Expenses	FY24 Updated Projection	FY25 Budget
Intergovernmental Revenues	2,711	3,031	Personnel	4,147,735	4,480,443
Charges for Service	11,378,254	12,199,121	Operating	4,584,054	4,153,833
Operating Transfers	61,738	123,476	Debt Service	2,061,618	2,055,593
Bond & Capital Lease Proceeds	750,557	0	Grants	18,050	18,050
			Transfers	27,040	27,040
Total	\$12,193,261	\$12,325,628	Total	\$10,838,497	\$10,734,959

FY25 NEW REQUESTS BY FUND

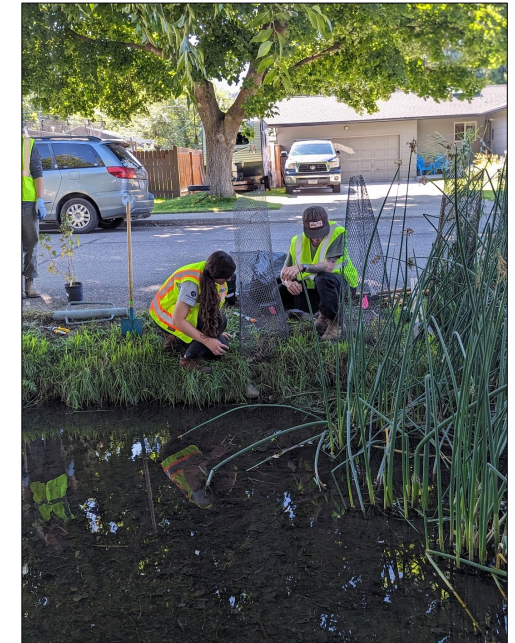
STORMWATER ENTERPRISE FUND

Green Infrastructure Maintenance

- New EV or hybrid vehicle for green infrastructure maintenance, including Level 2 charger
- Green infrastructure development is encouraged to protect water quality and mitigate climate impacts
- \$50,000 from Stormwater Enterprise Fund. Using funds from 2 approved FTE technicians to instead hire a maintenance manager and Montana Conservation Corps members for maintenance work



Missoula Water's new EV pickup



Examples of green infrastructure

Departmental Goal: Support development that promotes economically and environmentally responsible growth

FY25 BUDGET REVENUES & EXPENSES BY FUND

STORMWATER ENTERPRISE FUND

Stormwater Revenues	FY24 Updated Projection	FY25 Budget
Charges for Service	1,515,822	1,606,771
Transfers In	11,459	11,459
Total	\$1,527,281	\$1,619,100

Stormwater Expenses	FY24 Updated Projection	FY25 Budget
Personnel	587,030	735,612
Operating	453,815	436,771
Debt Service	113,448	112,357
Transfers	225,700	225,700
Total	\$1,379,993	\$1,510,440

A photograph of a path lined with trees, creating a tunnel effect. The path is covered in green grass and low-lying plants. The trees have green leaves, some of which are slightly yellowed. The right side of the image is faded into a white background where the word 'QUESTIONS' is written in a dark blue, sans-serif font.

QUESTIONS



BREAK (10 minutes)

COMMUNITY INVESTMENT PROGRAM

JUNE 12, 2024

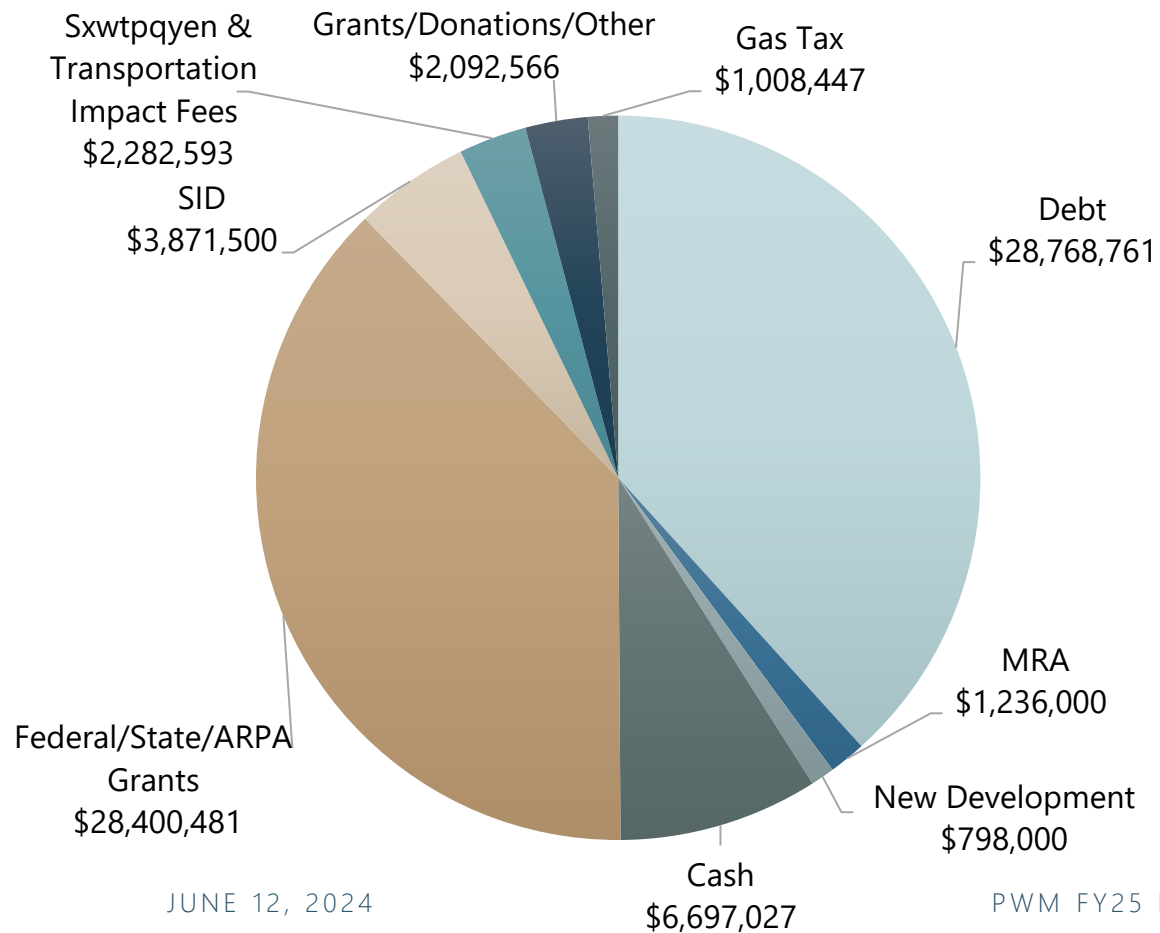
PWM FY25 BUDGET PRESENTATION

38

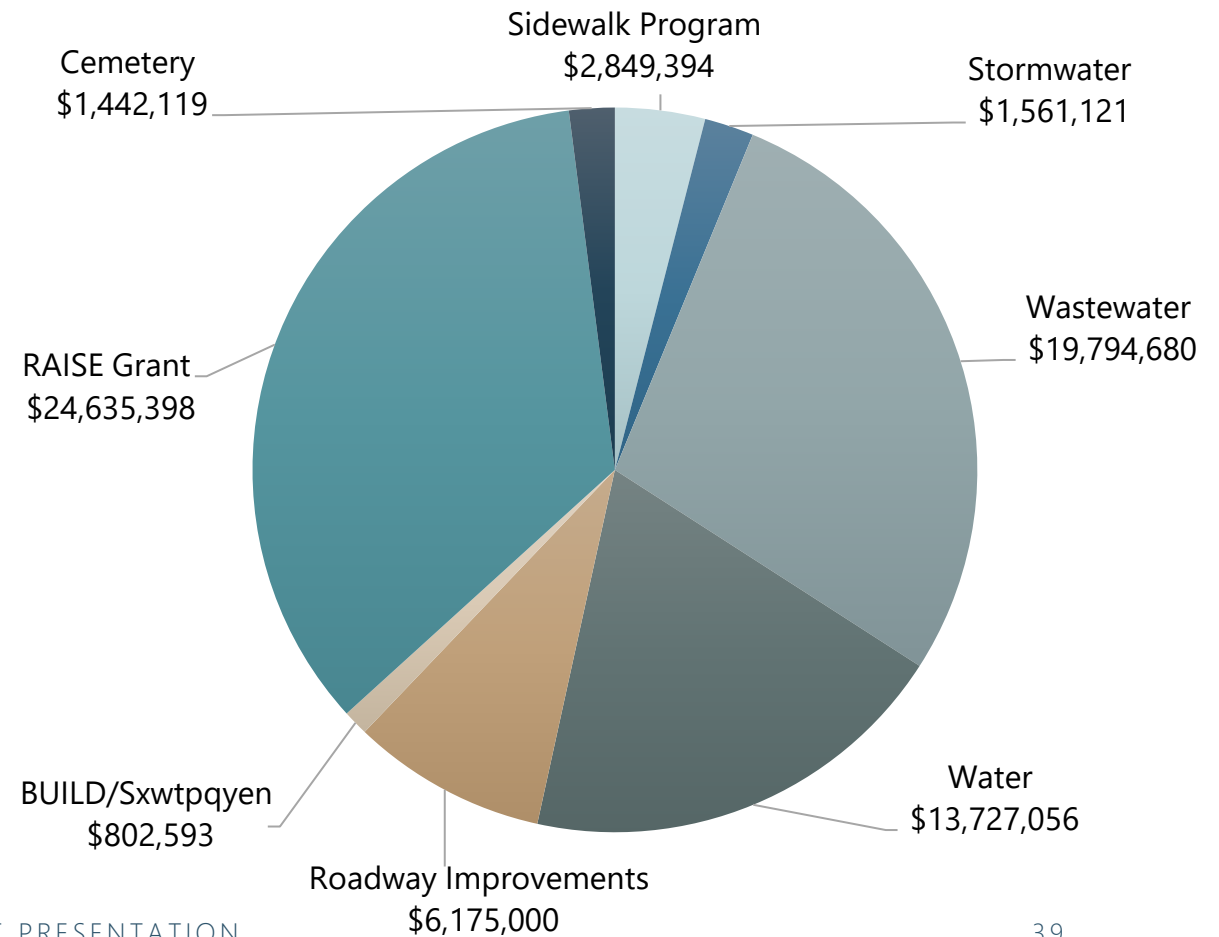
COMMUNITY INVESTMENT PROGRAM

FY25 BUDGET SUMMARY

Revenues— \$70,987,361



Expenses— \$70,987,361





TRANSPORTATION

COMMUNITY INVESTMENT PROGRAM

TRANSPORTATION PROJECT PRIORITIZATION

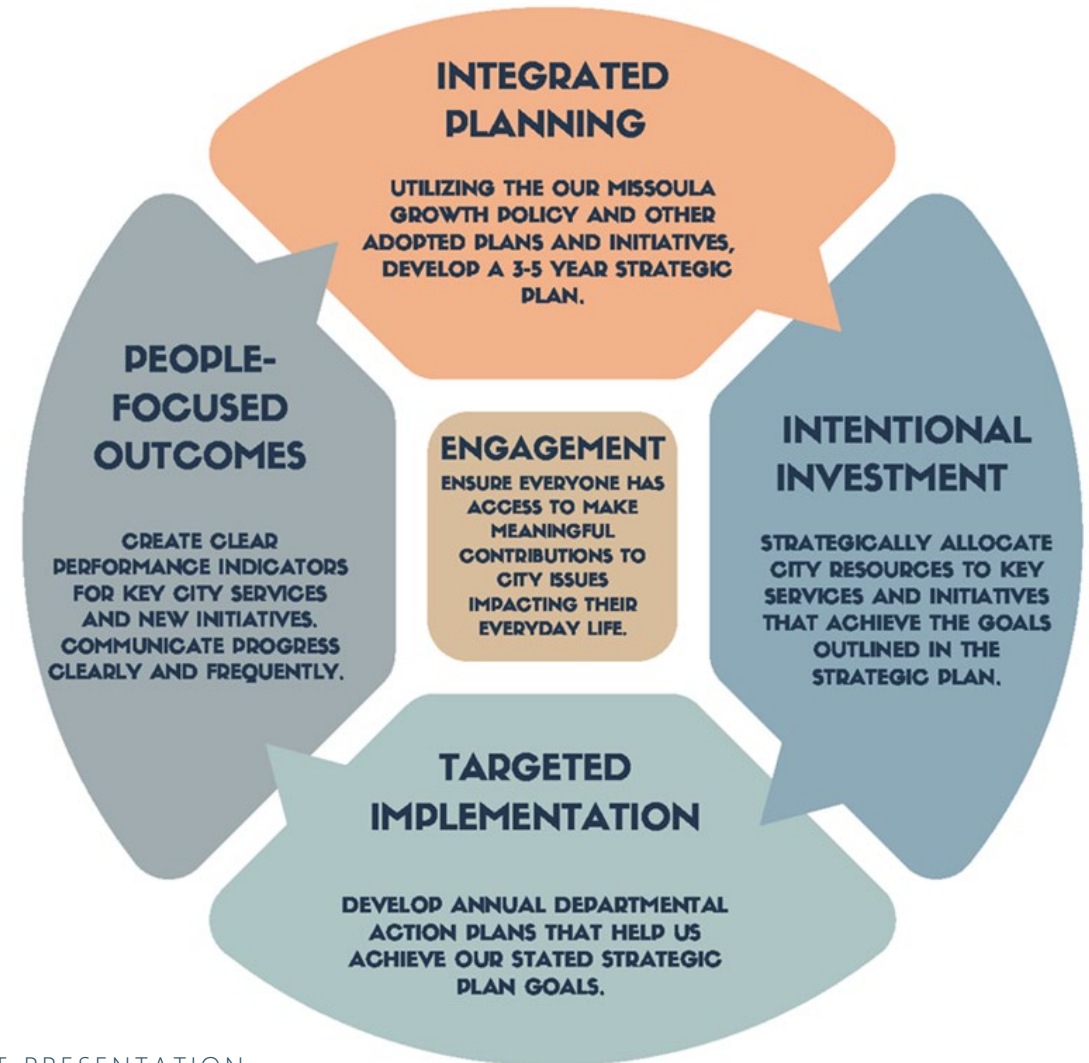
CITY OF MISSOULA STRATEGIC FRAMEWORK

MISSION

Reflecting the needs and values of our citizens, the City of Missoula commits to enhancing opportunity and quality of life through effective delivery of City services and fiscal stewardship while maintaining and creating a harmonious natural and built environment.

VISION

We are an inclusive city where all people can live and celebrate meaningful, purposeful and fulfilling lives through the confluence of unparalleled recreational, cultural and entrepreneurial opportunities.



COMMUNITY INVESTMENT PROGRAM

TRANSPORTATION PROJECT PRIORITIZATION

Sidewalks & Mobility	Sidewalks, Neighborhood Greenways, ADA ramps, spot safety and intersection improvements
Roadway Improvement	Complete Streets, intersection traffic control (roundabouts and signals), vehicle movements and safety (two way left turn lanes)
Parks Projects (combined CIPs)	Primary Commuter Trails and Parks access
Federal Aid Projects	Federal grant funded projects

COMMUNITY INVESTMENT PROGRAM

TRANSPORTATION PROJECT PRIORITIZATION

Scoring Criteria:

1. **Plan Conformity** — Project is included in adopted plans
2. **Connectivity** — Project provides connections to other facilities, such as existing sidewalks, bike lanes, trails, neighborhood greenways, and bus routes and/or provides connections where few or none exist
3. **Access** — Project provides access to key destinations
4. **Safety** — Project addresses identified safety concerns
5. **Equity** — Project addresses underserved neighborhoods and impacts of development
6. **Leverage** — Project builds on recent/upcoming projects, supports redevelopment, and/or brings other funding sources
7. **Readiness** — Project is ready for construction, planning/feasibility studies completed, engineering work completed, other jurisdictions or constraints addressed

COMMUNITY INVESTMENT PROGRAM

TRANSPORTATION PROJECTS

Active Projects
Turner Worden Sidewalks*
Ivy Franklin Ph 1*
Scott Street Ph 1
Kent/Central (Russell to Regent)
Orange/Cregg Intx
Eaton Street Ph 2
Lower Miller Creek Rd
California Street
Flynn & Mullan Trails
Burch/Maple/Sherwood (URD II sidewalks)
Collector Street Lighting

Grant-Funded Projects
DowntownSAM
South Ave Safe Street
Flynn & Mullan Trails
Broadway/Toole Intx
Lolo Street Bridge
Highway 200/East Msla
Grant Creek Realignment
Russell/Fairground Xing

Development-Driven Projects
Grant Creek/Expo Pkwy†
George Elmer Dr
England Blvd
Mary Jane Blvd South

†No funding requested in FY25

*Under construction

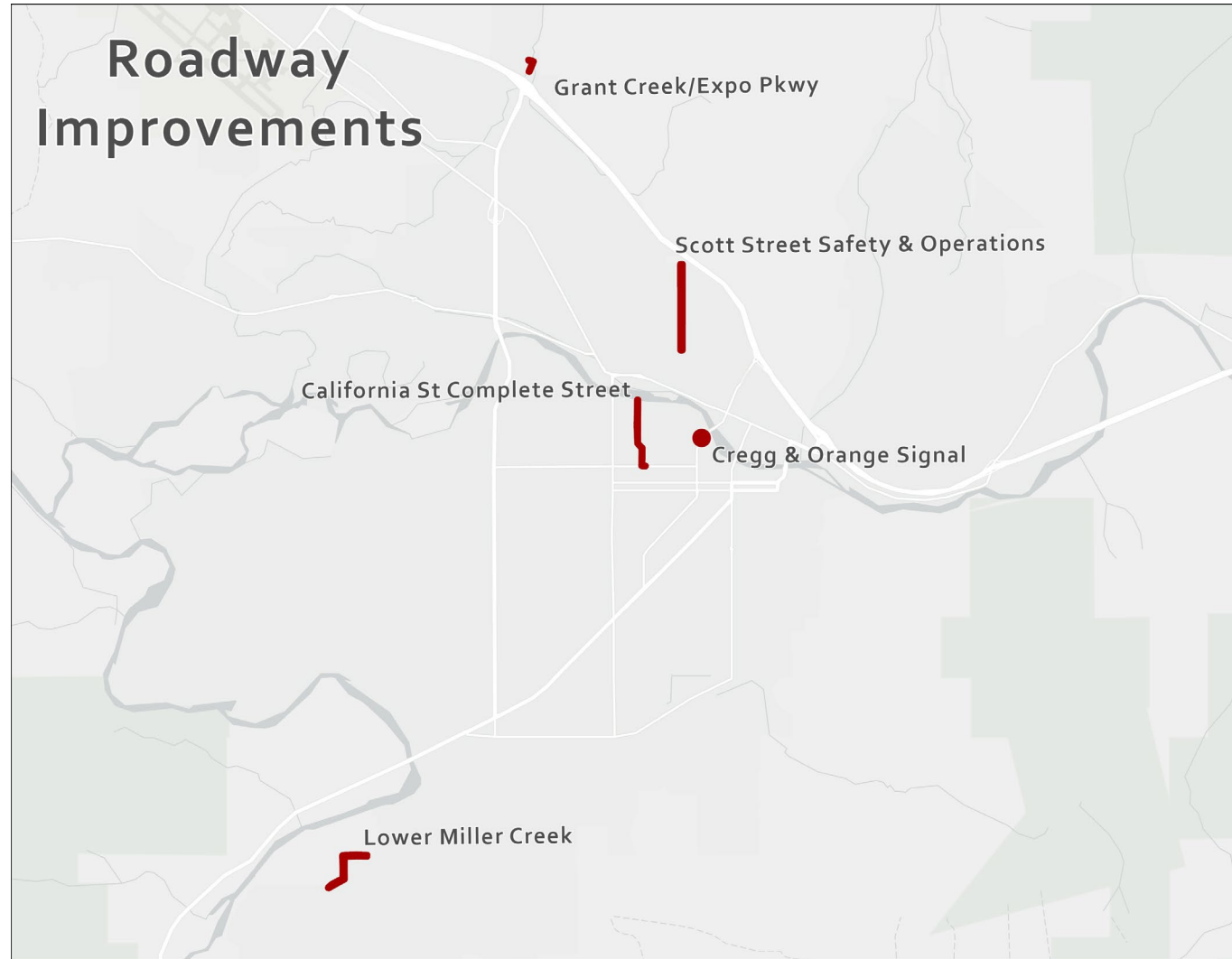
COMMUNITY INVESTMENT PROGRAM

HIGHLIGHTED TRANSPORTATION PROJECTS

FY25
Roadway
Improvements
\$6.2M

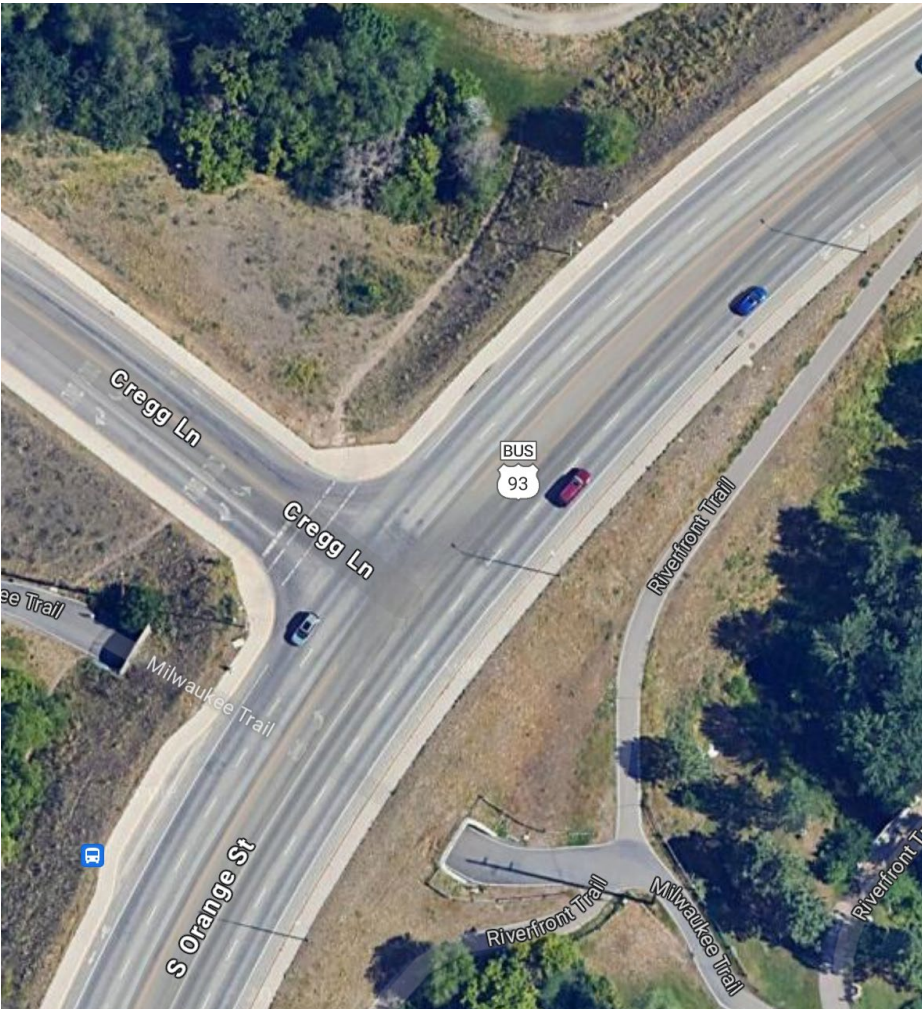
- Orange/Cregg Traffic Signal
- Scott Street, Phase I
- California Street Reconstruction
- Grant Creek Rd/Expo Parkway Improvements
- Lower Miller Creek Rd Reconstruction
- Collector Street Lighting
- Russell St Lighting

COMMUNITY INVESTMENT PROGRAM

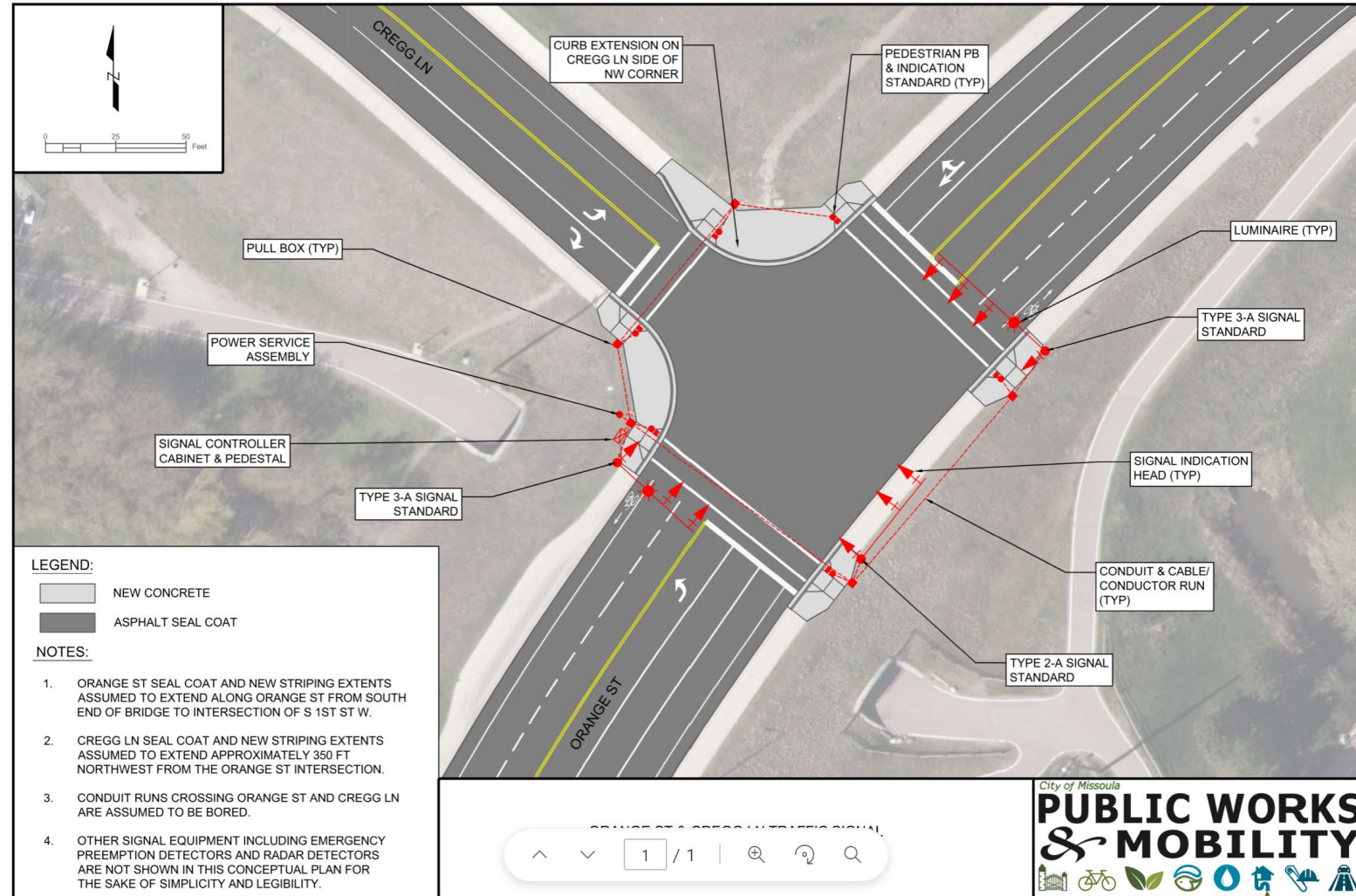


ORANGE/CREGG TRAFFIC SIGNAL

COMMUNITY INVESTMENT PROGRAM



JUNE 12, 2024



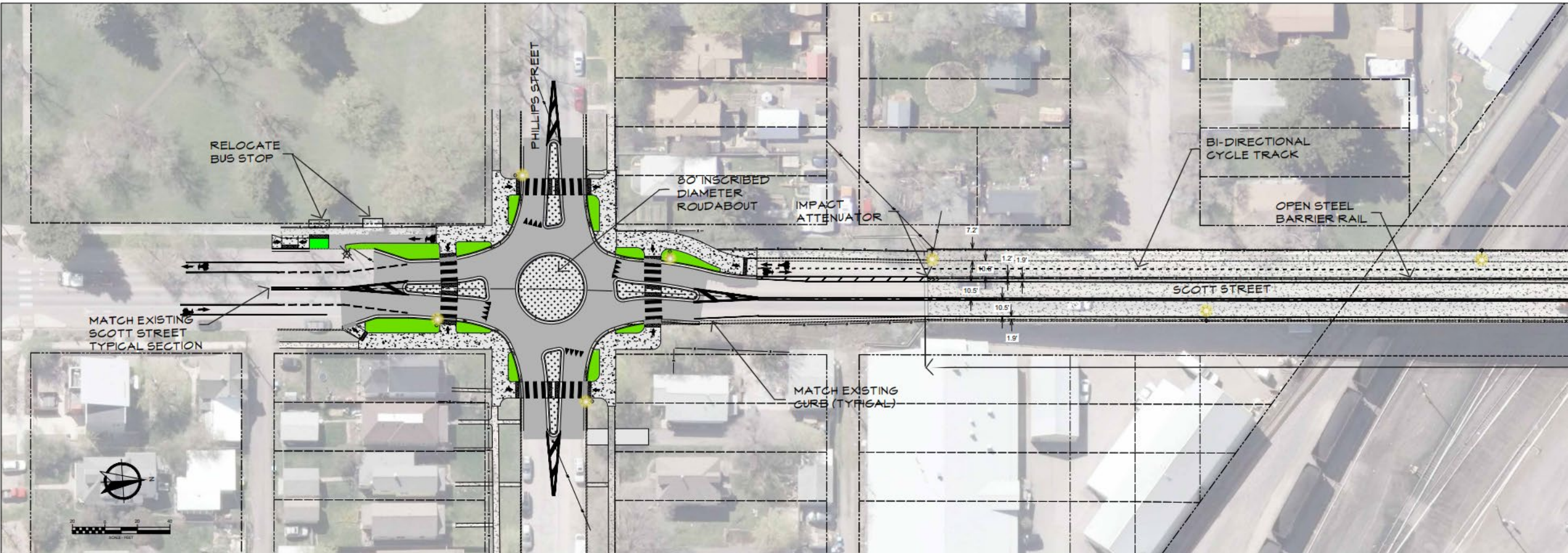
PWM FY25 BUDGET PRESENTATION

47

SCOTT STREET IMPROVEMENTS

COMMUNITY INVESTMENT PROGRAM

Scott St. & Phillips St. intersection improvements:



CALIFORNIA STREET

COMMUNITY INVESTMENT PROGRAM

Phase 1 (FY 25 CIP):

- River Rd to Dakota St
- Sidewalks, other complete street improvements

Phase 2 (Future):

- Dakota to S 3rd St
- Includes road realignment, traffic calming
- Sidewalks, edge lane road for bikes



COMMUNITY INVESTMENT PROGRAM

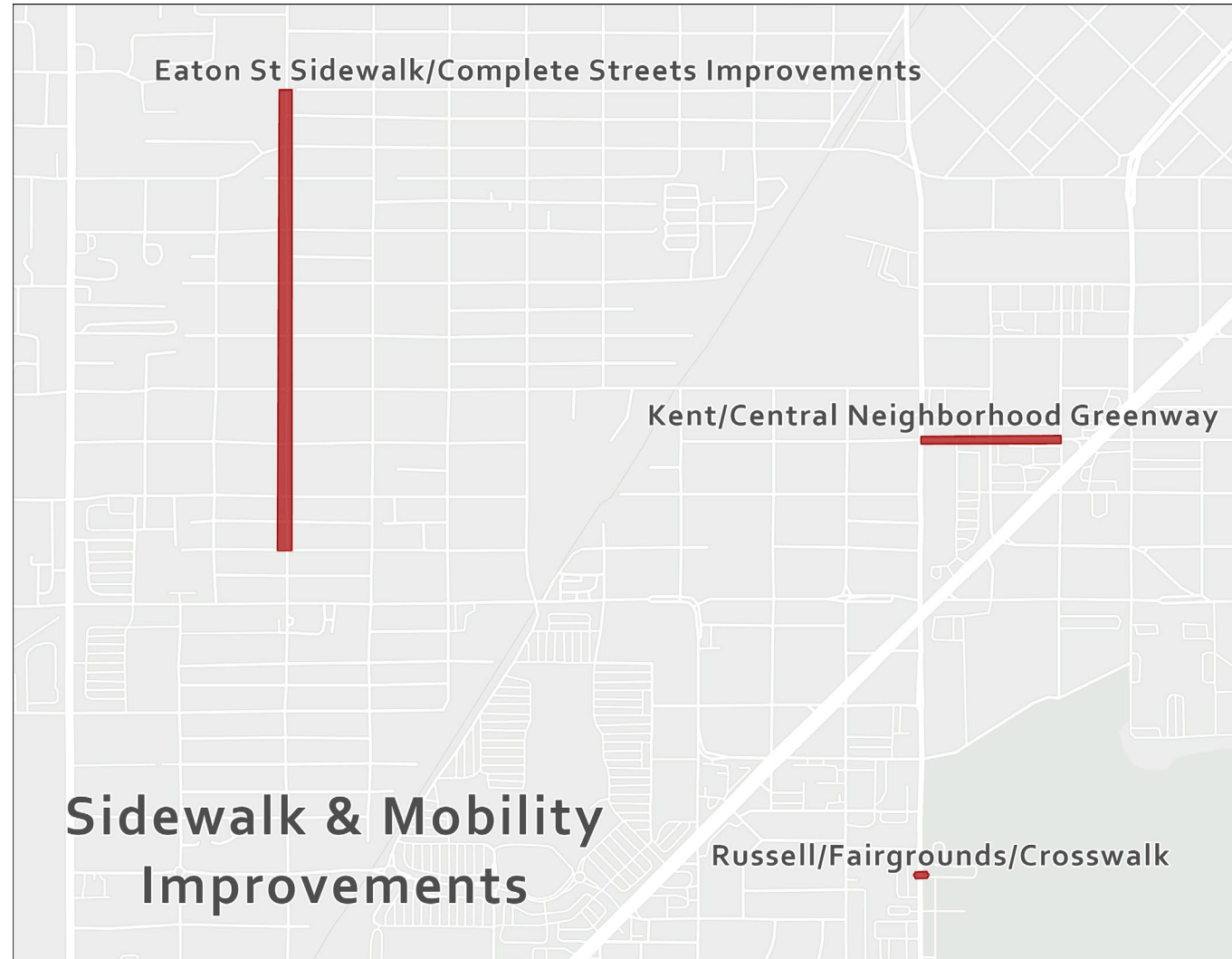
HIGHLIGHTED TRANSPORTATION PROJECTS

FY25
Sidewalks and
Mobility
Improvements
\$2.8M

- Russell/Fairgrounds Trail Crosswalk*
- Kent/Central Greenway: Ph I (Russell to Regent)
- Eaton St, Ph II (13th to Sussex)
- Hazardous Sidewalk Projects
- Alternative Materials Sidewalk Pilot Project

*Grant funded through Transportation Alternatives

COMMUNITY INVESTMENT PROGRAM



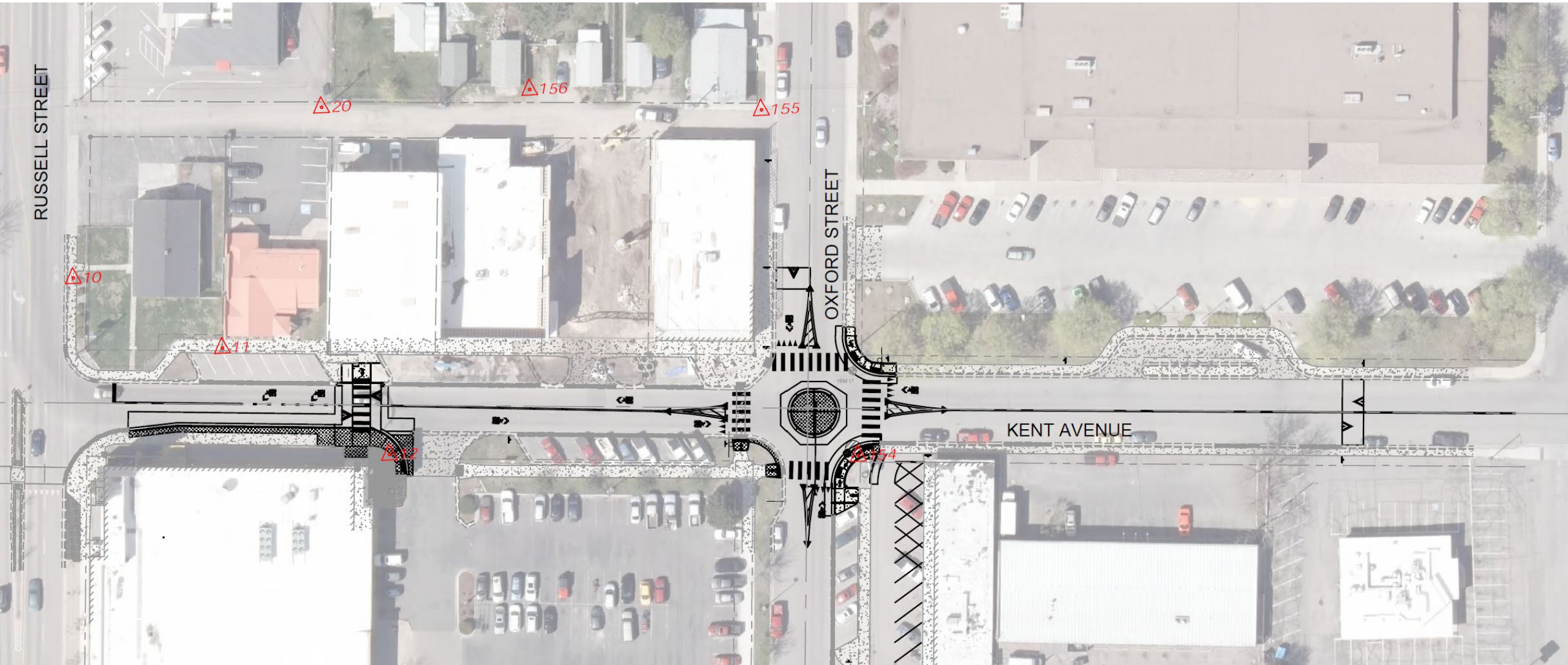
EATON STREET SIDEWALKS PH 2

COMMUNITY INVESTMENT PROGRAM



KENT-CENTRAL GREENWAY PH 1

COMMUNITY INVESTMENT PROGRAM



OTHER SIDEWALK PROGRAMS

COMMUNITY INVESTMENT PROGRAM



Hazardous sidewalk replacement: \$50,000



Alternative materials pilot: \$65,000

COMMUNITY INVESTMENT PROGRAM

HIGHLIGHTED TRANSPORTATION PROJECTS

BUILD Project, Phase II
\$803K

- Flynn & Mullan Trails*
- George Elmer Drive – McNett Flats Portion
- Mary Jane Blvd – Snowfarm Portion
- England Blvd – West End Homes Portion
- George Elmer Drive North†
- Grant Creek Trail Paving†

*Grant funded through Transportation Alternatives

†No funding request in FY25

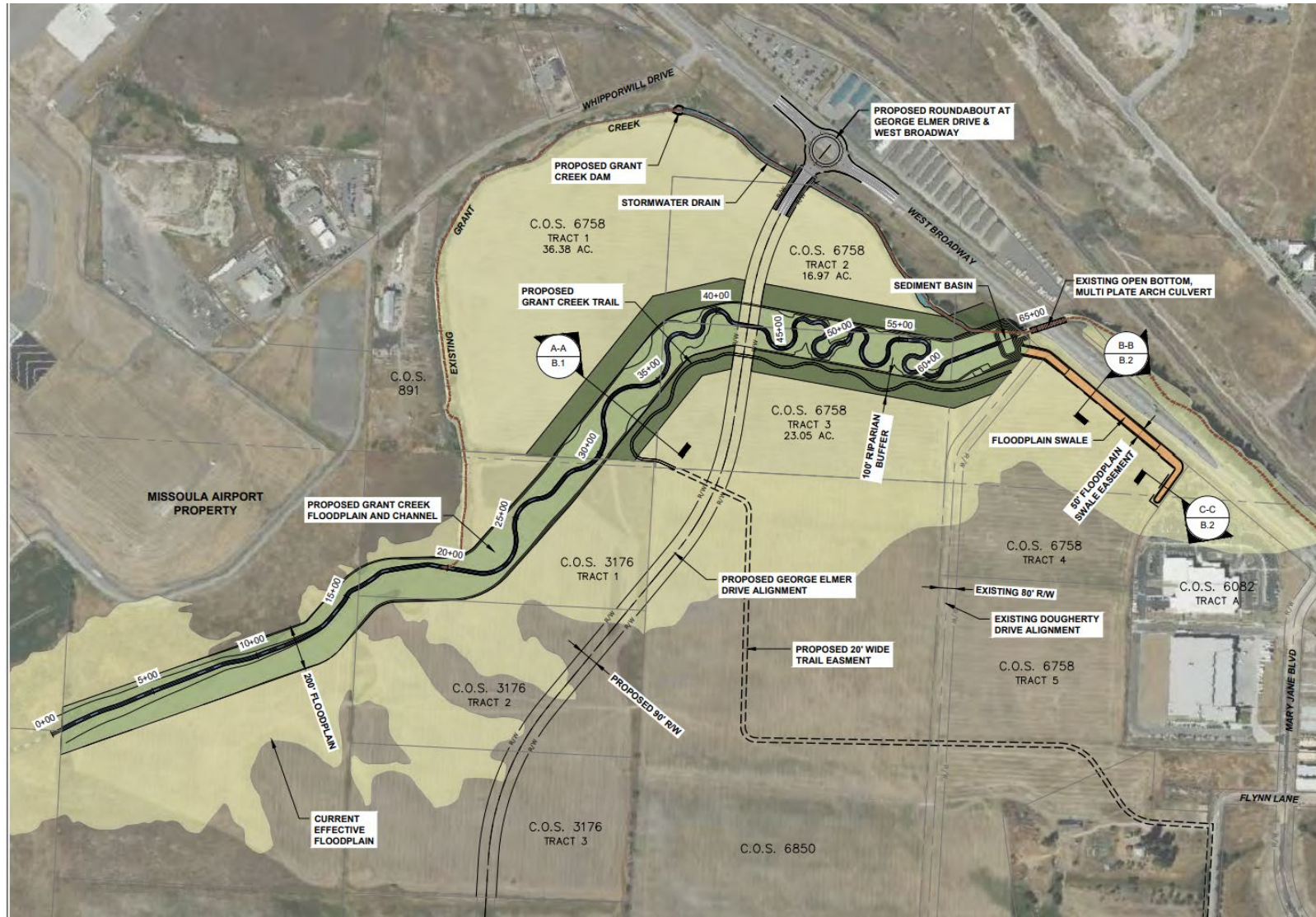
MULLAN BUILD

COMMUNITY INVESTMENT PROGRAM



GRANT CREEK REALIGNMENT

COMMUNITY INVESTMENT PROGRAM



COMMUNITY INVESTMENT PROGRAM

HIGHLIGHTED TRANSPORTATION PROJECTS

Federal Grants

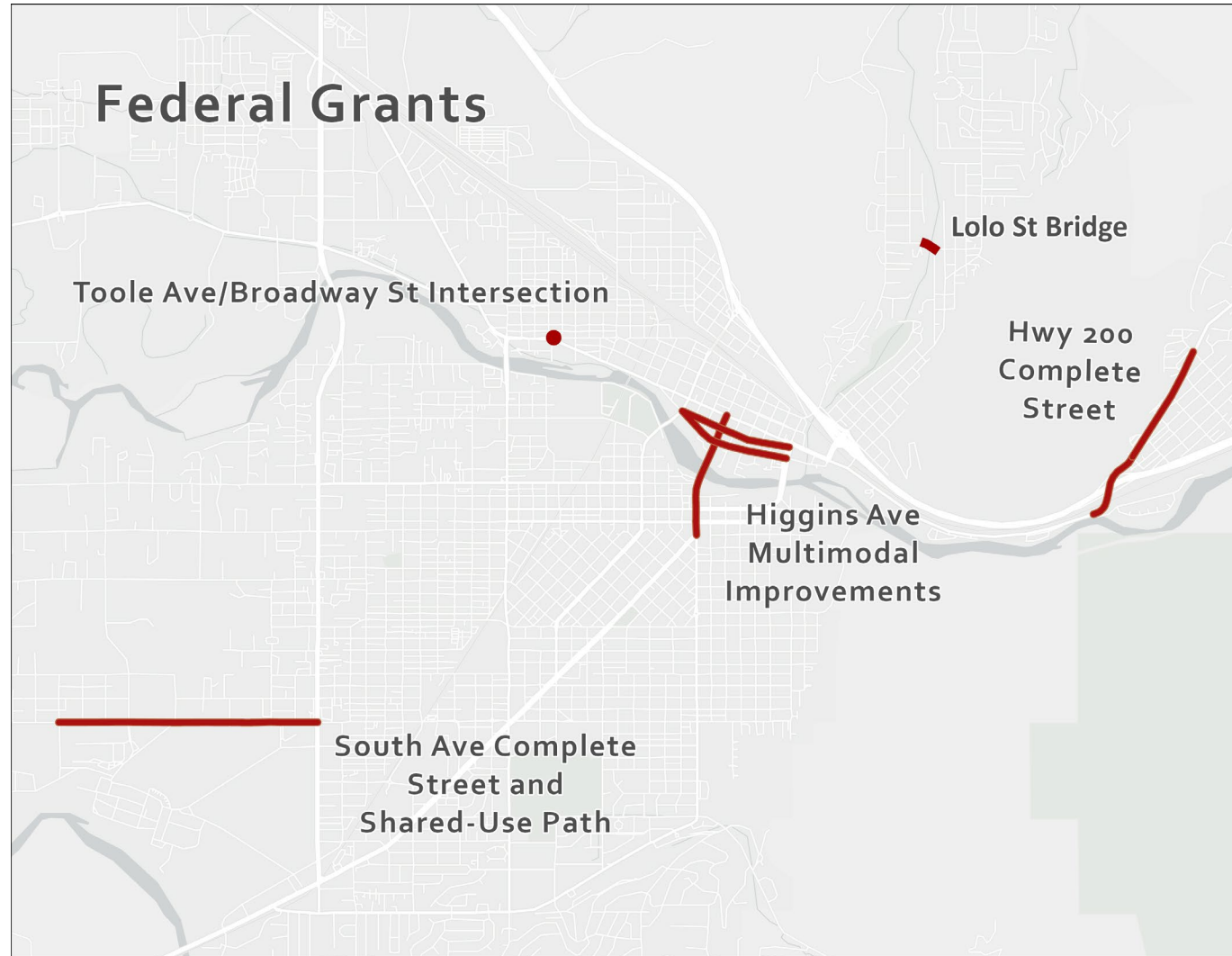
FY25: \$24.5M

Total: \$68.9M

- Downtown SAM
- Broadway/Toole Intersection*
- Lolo St Bridge*
- Highway 200/East Missoula*

*No funding request in FY25

COMMUNITY INVESTMENT PROGRAM



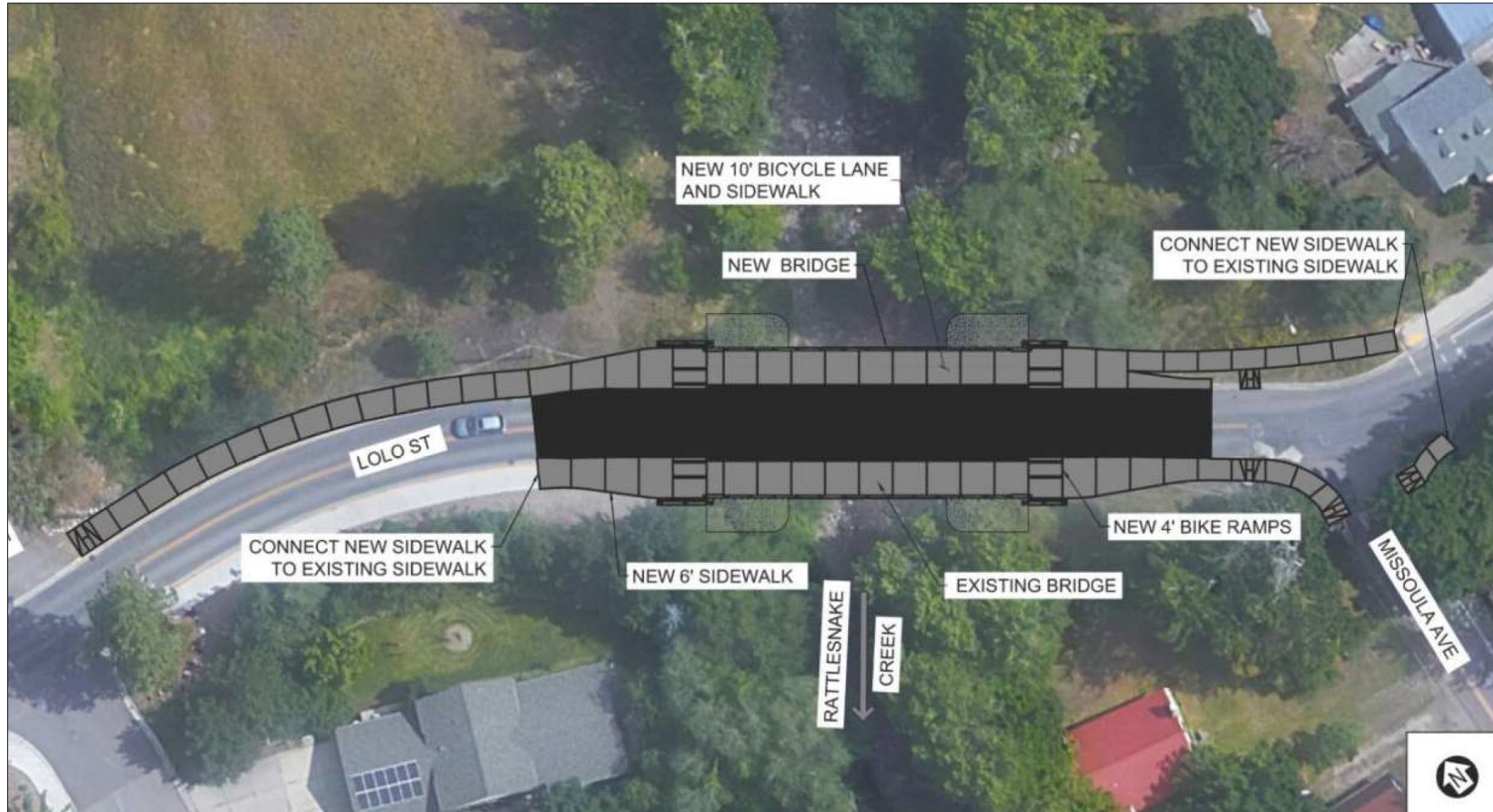
LOLO STREET BRIDGE REPLACEMENT

COMMUNITY INVESTMENT PROGRAM



LOLO STREET BRIDGE REPLACEMENT

COMMUNITY INVESTMENT PROGRAM



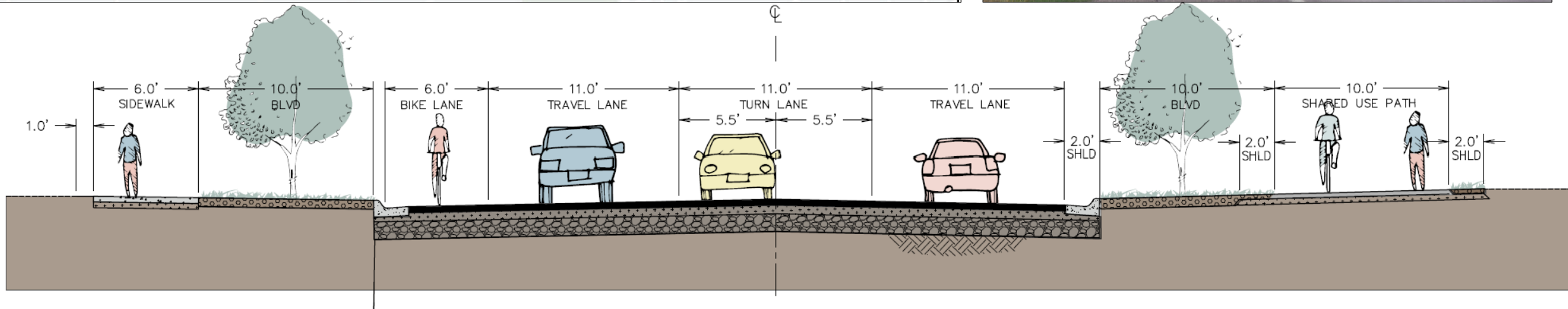
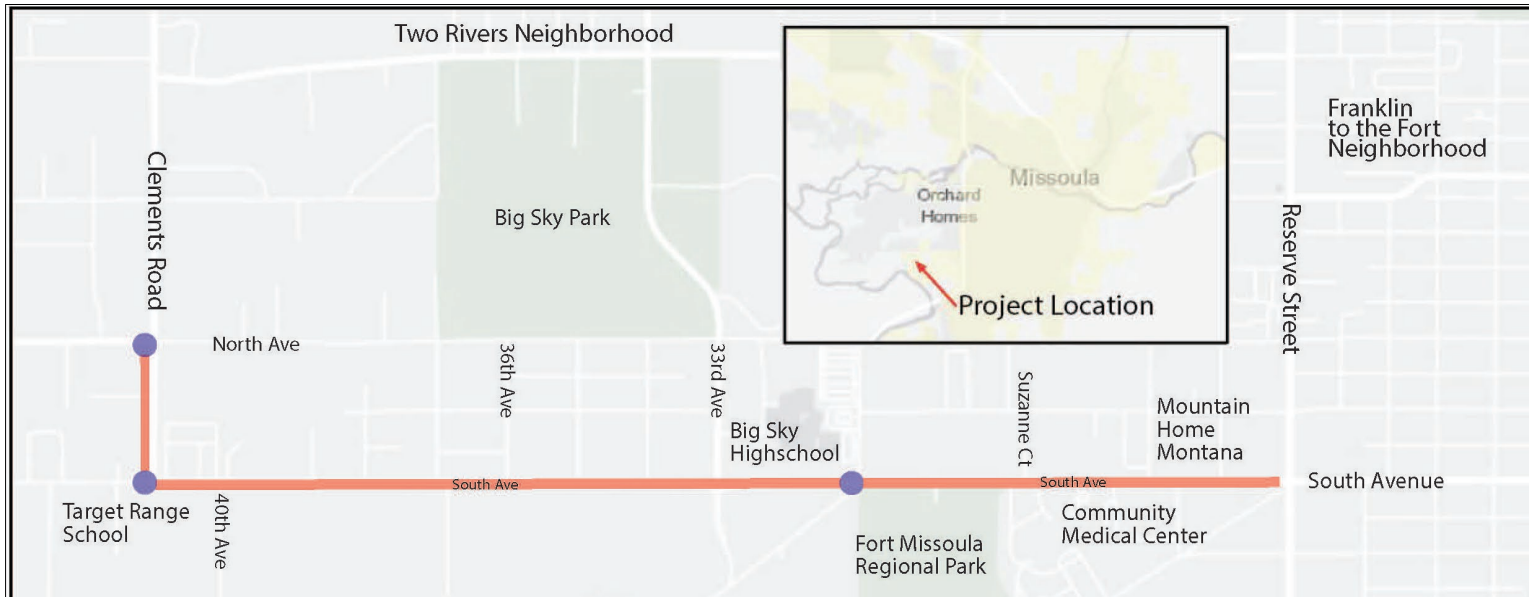
DOWNTOWN SAM

COMMUNITY INVESTMENT PROGRAM



SOUTH AVE SAFE STREET IMPROVEMENTS

COMMUNITY INVESTMENT PROGRAM



BROADWAY & TOOLE INTERSECTION

COMMUNITY INVESTMENT PROGRAM



- Safety concerns – lots of turning movements
- Inefficient signal timing
- Access to W Broadway Master Plan area
- Poor ped crossing options
- Bike lane ends

COMMUNITY INVESTMENT PROGRAM

FURTHER INFORMATION

www.engagemissoula.com/transportation-community-investment-program

Transportation Community Investment Program - Selection Process





Background

Each year City staff receive requests from residents, City Council, and other groups to complete transportation projects that they consider to be important. Staff also reviews the many plans the City has adopted to make transportation, safety, and other important improvements. The challenge is that there simply is not enough funding available to fulfill all these requests. So, in 2019 the City developed a set of scoring criteria (detailed below) to evaluate, rank, and prioritize all these projects. City Council approved this approach to project prioritization, and directed staff to place more emphasis on safety and equity when ranking projects.

Current Transportation Community Investment Program Projects

City staff created and regularly updates a list of all transportation community investment program (CIP) projects that are being considered for construction or implementation, their

REGISTER to join the conversation

Who's Listening

Aaron Wilson

Planning Manager
City of Missoula Public Works & Mobility Department

Phone 406-552-6668
Email WilsonA@ci.missoula.mt.us

Ben Weiss

Senior Transportation Planner
City of Missoula

Phone 406-552-6352
Email weissb@ci.missoula.mt.us

Monte Sipe

Construction Project Manager

QUESTIONS

JUNE 12, 2024

PWM FY25 BUDGET PRESENTATION

66



UTILITIES

COMMUNITY INVESTMENT PROGRAM

HIGHLIGHTED UTILITY PROJECTS

FY25
Water Distribution
Projects
\$9.6M

Water Main Replacement Projects

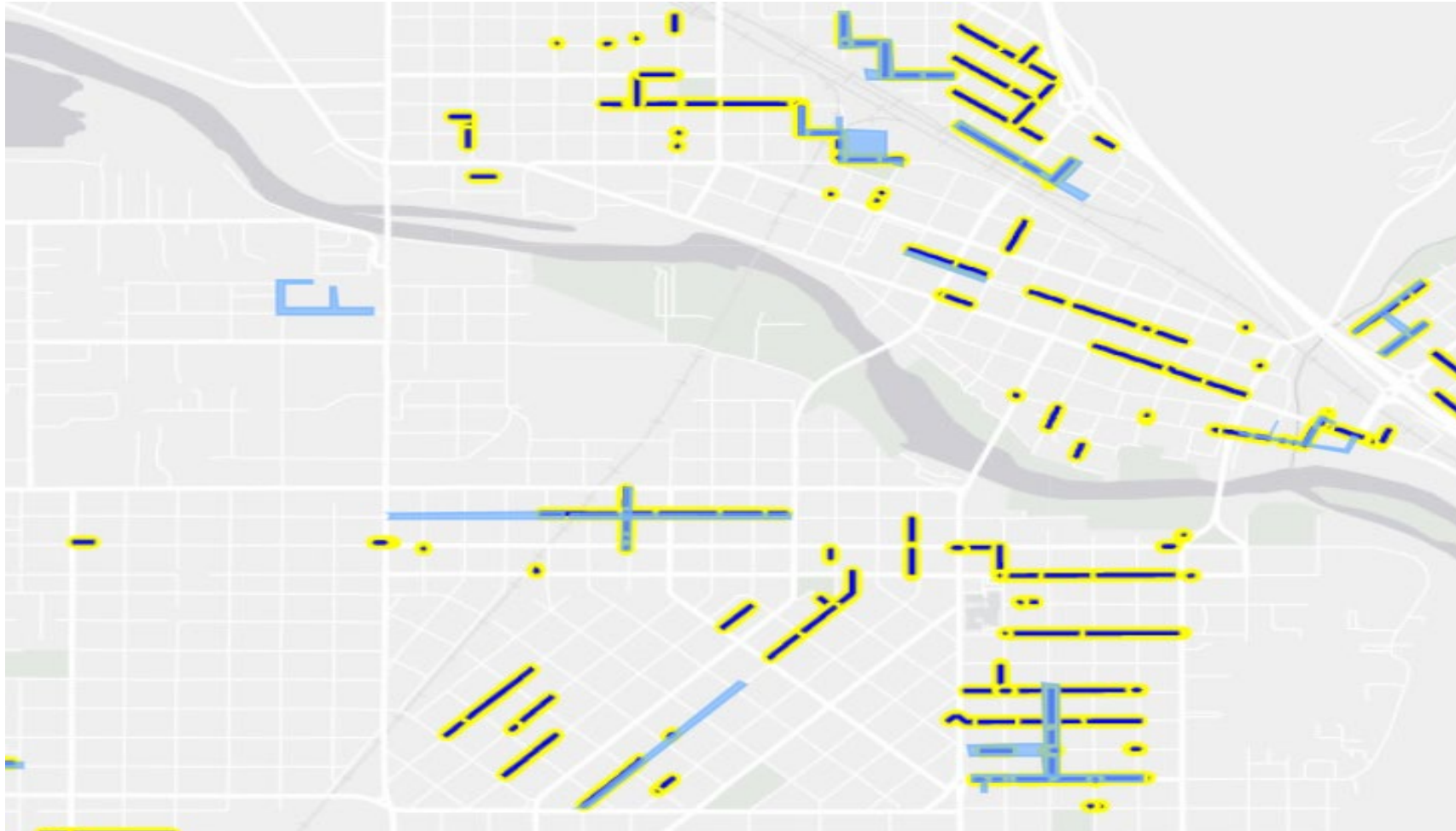
- S 4th St (Bitterroot Trails to Orange) Phase 2
- Sherwood (McCormick to Sherwood & Phillips)
- Milton/Howell/Phillips
- N 1st Ave & Woody St
- Ronald Ave & Keith Ave
- Fairview & Benton
- 13th St

Water Main Extension Projects

- Montana/Idaho URD III

WATER DISTRIBUTION SYSTEM

COMMUNITY INVESTMENT PROGRAM



- Proposed water main replacement projects
- - Priority 1 water mains

WATER DISTRIBUTION SYSTEM

CIP PRIORITIZATION CRITERIA

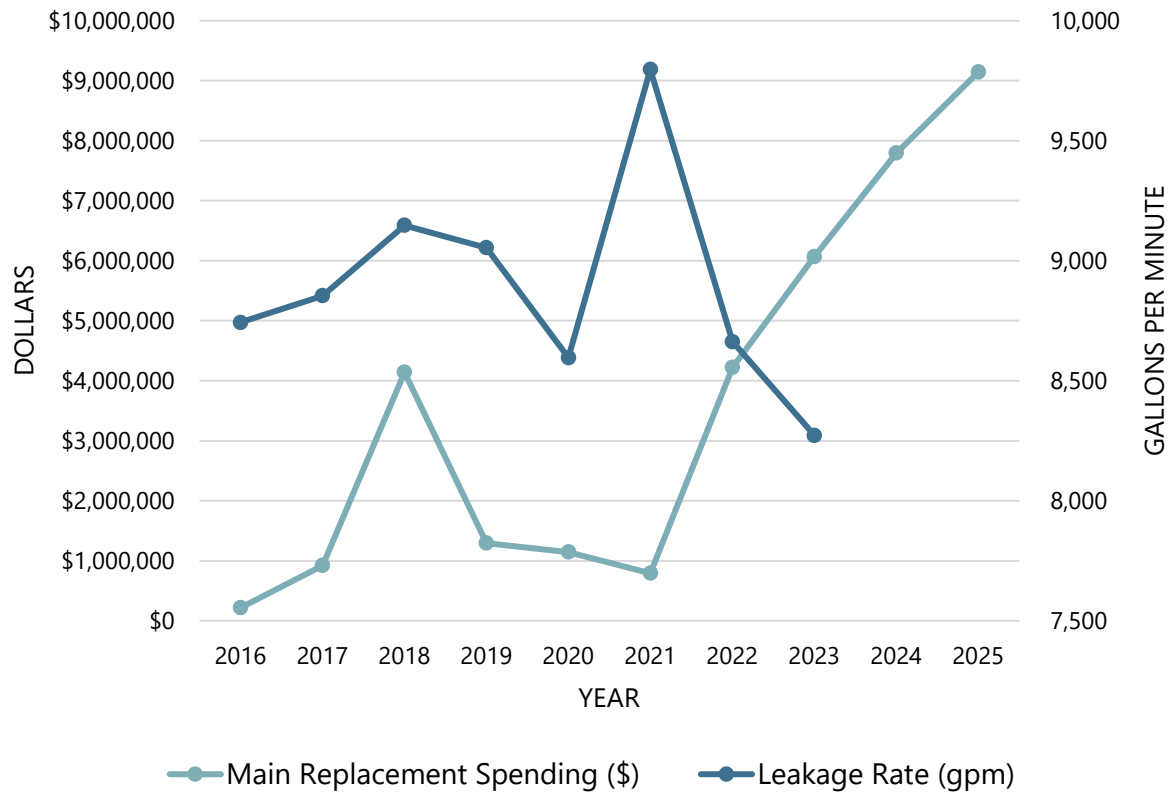
Water main replacement project ranking criteria:

- **Leak History** — Known leaks over 50 gallons per minute ranked highest
- **Pipe Type and Age**
 - Priority 1: Kalamein & Invasion pipe
 - Priority 2: Other pipes over 75 years old
 - Priority 3: Other pipes over 50 years old
- **Coordination with other City or private projects** — More cost-effective to combine with other projects
- **Equity** — Projects located in underserved neighborhoods or impacted by development rank higher
- **Consequences of Leakage** — Hillside areas and commercial areas are ranked higher
- **Other** — If increases capacity, system capacity storage, water supply, or water rights – receives additional points

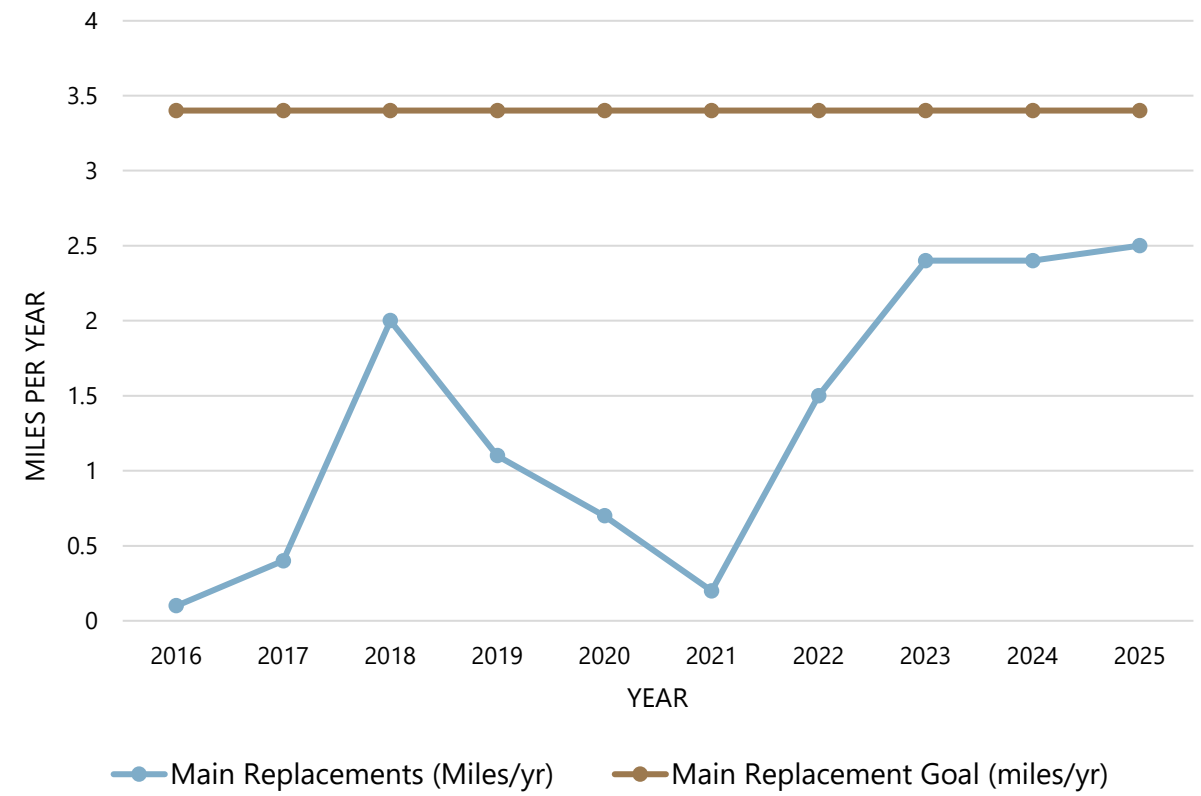
WATER DISTRIBUTION SYSTEM

MAIN REPLACEMENT TRENDS

Main Replacement Spending vs Leakage Rate



Main Replacements vs Main Replacement Goal



COMMUNITY INVESTMENT PROGRAM

HIGHLIGHTED UTILITY PROJECTS

FY25
Water Production
Improvements
\$2.8M

- SCADA Improvements
- Pump Building Improvements
- Rattlesnake Wilderness Lakes
- Pump House Solar Arrays

WATER PUMP HOUSE IMPROVEMENTS

COMMUNITY INVESTMENT PROGRAM

Dixon Well Chlorine Room Replacement



Agnes Well Doors and Roof Replacement



RATTLESNAKE WILDERNESS LAKES

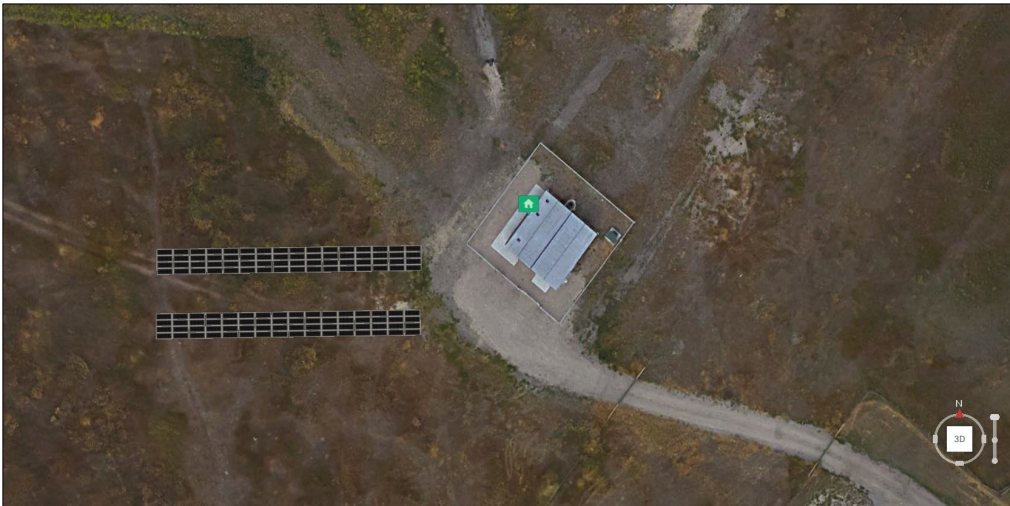
COMMUNITY INVESTMENT PROGRAM

- 10 dams on 8 wilderness lakes
- All dams are in poor condition and don't meet Forest Service standards
- McKinley Lake dam to be decommissioned in July 2024
- Plan to develop environmental documents to remove or replace the remaining dams



PUMPHOUSE SOLAR ARRAY

COMMUNITY INVESTMENT PROGRAM



Water Net Metered Solar Sites

- North Reservoir (Waterworks Hill)
- South Reservoir
- Haugan Wells
- Skyview Reservoir
- 23rd Avenue Wells
- Orchard Well
- 6th St Well
- High Park Boosters

COMMUNITY INVESTMENT PROGRAM

HIGHLIGHTED UTILITY PROJECTS

FY25
Water Misc.
Improvements
\$1.4M

- Water Meters
- Hydrants
- Leak Detection Equipment
- Water Main Upsizing

COMMUNITY INVESTMENT PROGRAM

HIGHLIGHTED UTILITY PROJECTS

FY25
Wastewater Plant
Improvements
\$9.6M

- RAS Valve Replacement
- RRF Equipment Replacement
- Wastewater Side 2 Solar Array
- RRF programmable logic controllers (PLC)
Equipment Replacement
- Solids Handling Expansion

RAS VALVE REPLACEMENT

COMMUNITY INVESTMENT PROGRAM



Leaking RAS valves at the treatment plant



Rusty, corroded RAS valve

WASTEWATER SIDE 2 SOLAR ARRAY

COMMUNITY INVESTMENT PROGRAM



Existing solar panels at the RRF

- Similar to Side 1 Solar Array completed in 2023
- Half the size of Side 1
- Estimated 500 panels, 350,000 kWh, 250 kw in size
- No power purchase agreement necessary

COMMUNITY INVESTMENT PROGRAM

HIGHLIGHTED UTILITY PROJECTS

FY25
Wastewater Compost
Improvements
\$7.9M

- Garden City Compost, Phase II
- Compost facility is essential to diverting a significant amount of material from the landfill and providing compost for the community.
- State permit requires composting on paved surfaces

GARDEN CITY COMPOST, PHASE II

COMMUNITY INVESTMENT PROGRAM

Garden City Compost Facility Improvements, Phase II

Negative Pressure Aerated Static Pile

- Composting process to be constructed over concrete slab, with in-floor aeration
- Collect air from negative pressure system and discharge through biofilter for odor reduction
- Reuse concrete blocks to create curing bunkers



COMMUNITY INVESTMENT PROGRAM

HIGHLIGHTED UTILITY PROJECTS

FY25
Wastewater
Collections
Improvements
\$2.5M

- Clark Fork Sewer Crossing
- Sewer Main Rehabilitation
- Collections System Improvements
- Misc Sewer Main Upsizing

CLARK FORK SEWER CROSSING

COMMUNITY INVESTMENT PROGRAM



CLARK FORK SEWER CROSSING

COMMUNITY INVESTMENT PROGRAM

- 36-inch concrete pipe installed in 1963
- 2024 Scour Analysis from MMI

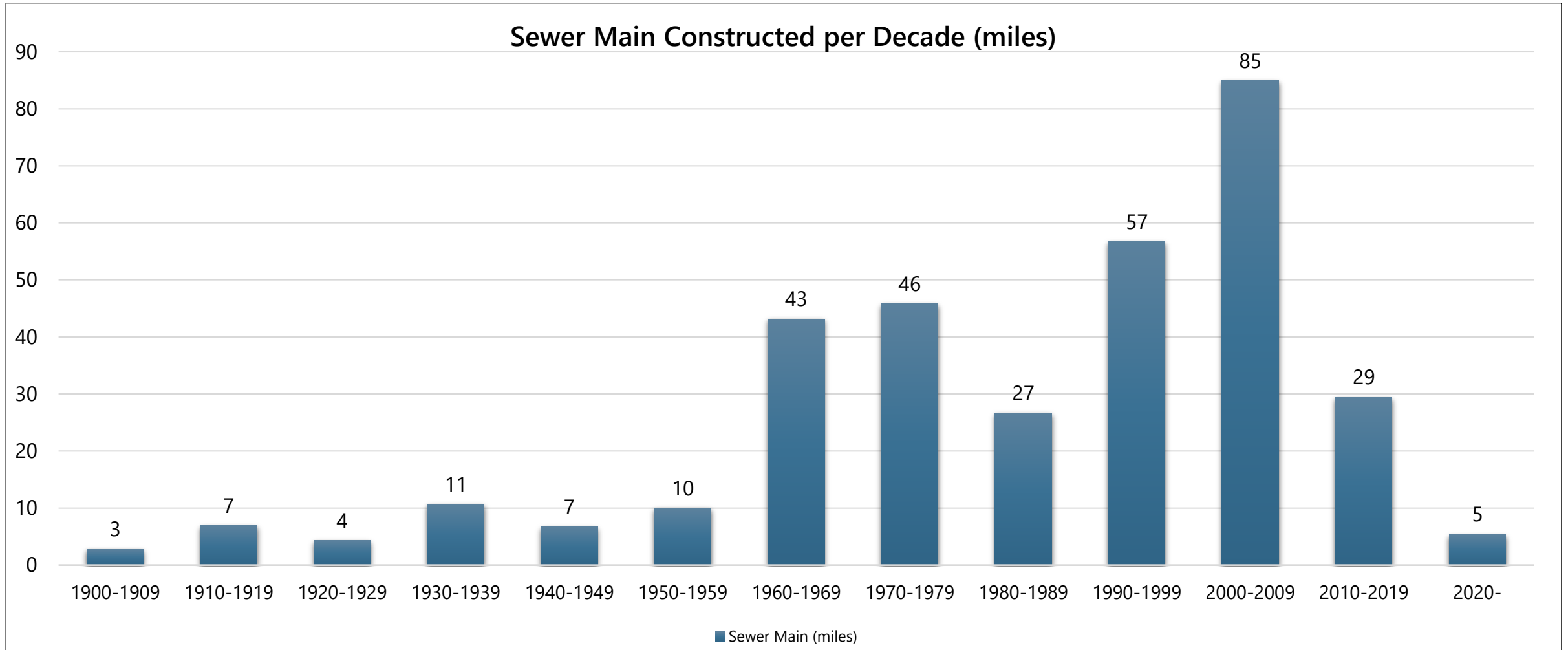
Scour Hole Within
0.1' of Pipe Bottom

Clark Fork River

Sewer Pipeline
Concrete Cap

SEWER MAIN REHABILITATION PROGRAM

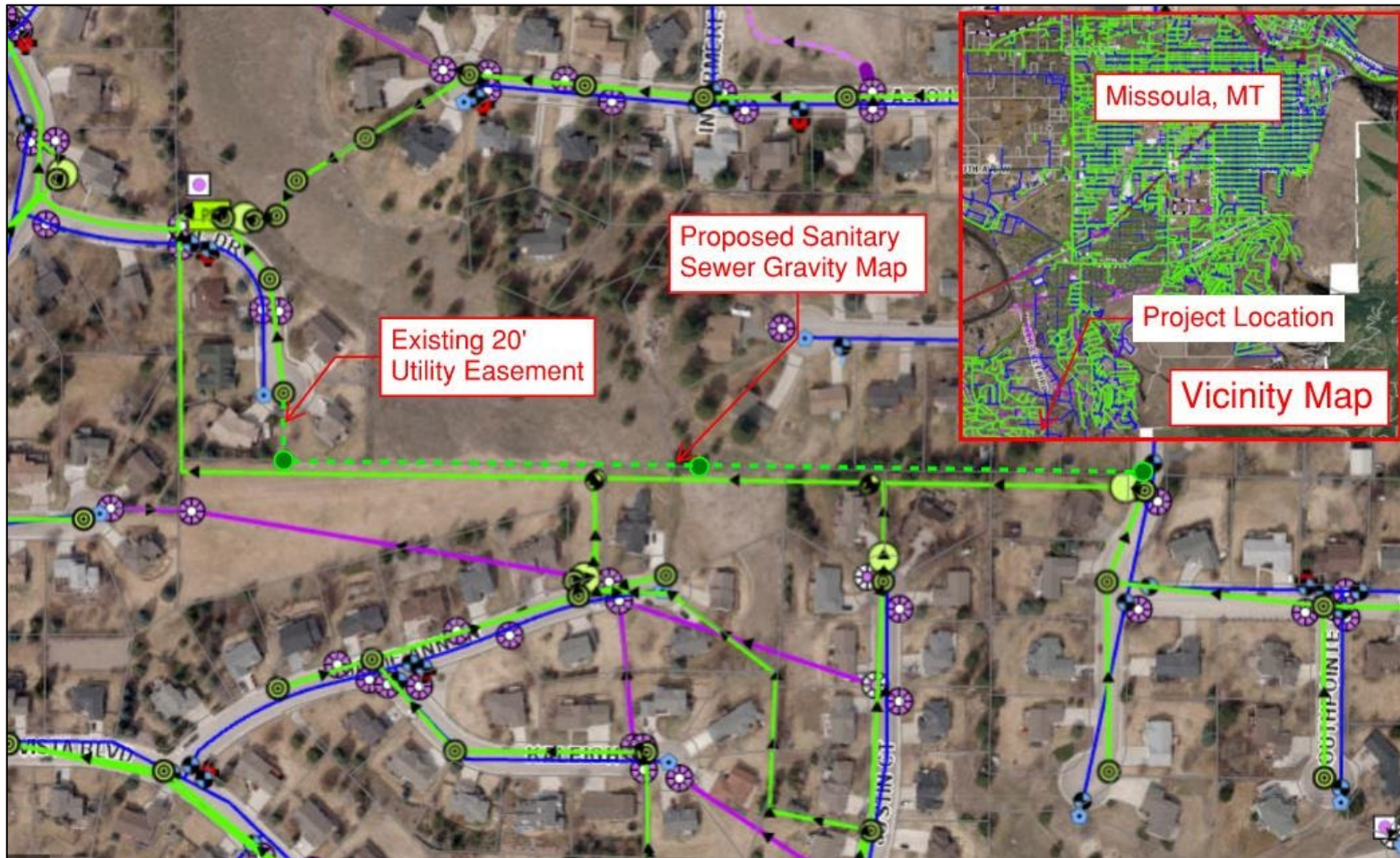
COMMUNITY INVESTMENT PROGRAM



SEWER MAIN REHABILITATION PROGRAM

COMMUNITY INVESTMENT PROGRAM

STEP System Decommissioning Project - Southpointe



COMMUNITY INVESTMENT PROGRAM

HIGHLIGHTED UTILITY PROJECTS

FY25 Stormwater
Improvements
\$1.5M

- Bitterroot Outfall
- Takima Park Bioretention
- Missoula Development Park Condition Assessment and Repairs
- Garland Park/Moose Can Gully Green Stormwater Infrastructure
- Missoula Public Library Living Roof

BITTERROOT OUTFALL PROJECT

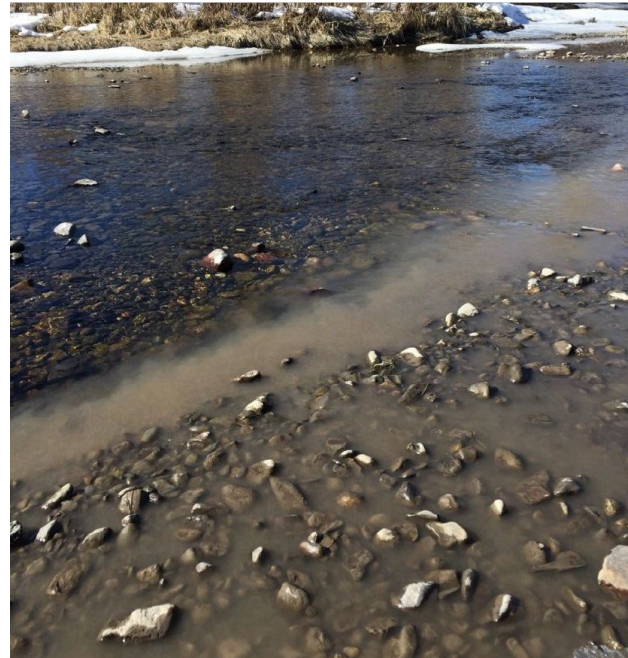
COMMUNITY INVESTMENT PROGRAM

Current Conditions

Deferred vegetation maintenance around wingwalls and apron threatens infrastructure stability



Sediment-laden stormwater entering the Bitterroot River



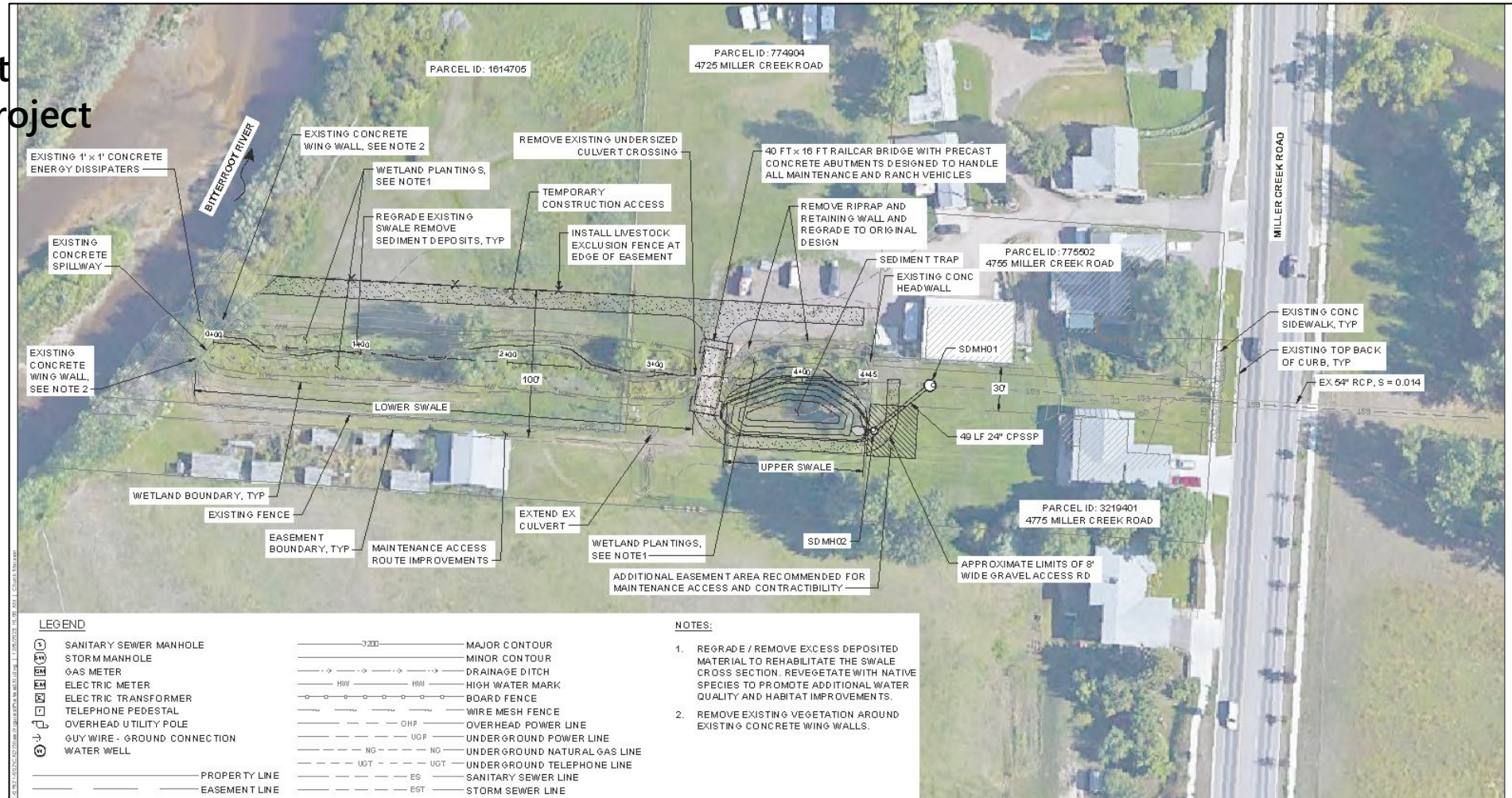
City staff removing accumulated road sand from outfall channel to prevent it from entering the Bitterroot River →



BITTERROOT OUTFALL PROJECT

COMMUNITY INVESTMENT PROGRAM

Bitterroot Outfall Project Design



COMMUNITY INVESTMENT PROGRAM

FURTHER INFORMATION

Engage Missoula:

www.engagemissoula.com/transportation-community-investment-program

City website on Public Works & Mobility Infrastructure Projects in Progress:

www.ci.missoula.mt.us/2649/Projects

QUESTIONS



UTILITY RATES

UTILITIES

FINANCIAL METRICS

Financial Pro Forma:

- Prepared for each of the utilities (water, wastewater & stormwater)
- Forecasts revenues and operating and capital expenditures in utility enterprise funds and development funds over 5 years to demonstrate compliance with financial metrics:
 - **Debt Service Coverage (Required by bond holders)**
 - Net revenue available for debt service > 1.25 times actual debt service
 - **Days Cash On Hand (Internal policy)**
 - 120 days

UTILITIES

STRATEGIC GOALS

Water

- Reduce our nearly 50% rate of leakage
- Replace 1% of water mains per year (approximately \$10 million/year)
- Assist customers with service line replacements (> 16,000 galvanized service lines in the system)
- Complete meter replacement project
- Solar array installation

Wastewater

- Work toward rehabbing 1% of sewer mains per year
- Aging equipment at Resource Recovery Facility (20-60 years old)
- Build financial capacity for anticipated nutrient removal requirements
- Large Projects:
 - Solids Handling, Compost, 2nd Solar Array, Clark Fork Sewer Crossing

Stormwater

- Increasing debt service for capital projects
- Matching funds for grants

UTILITY RATES

PRO FORMA

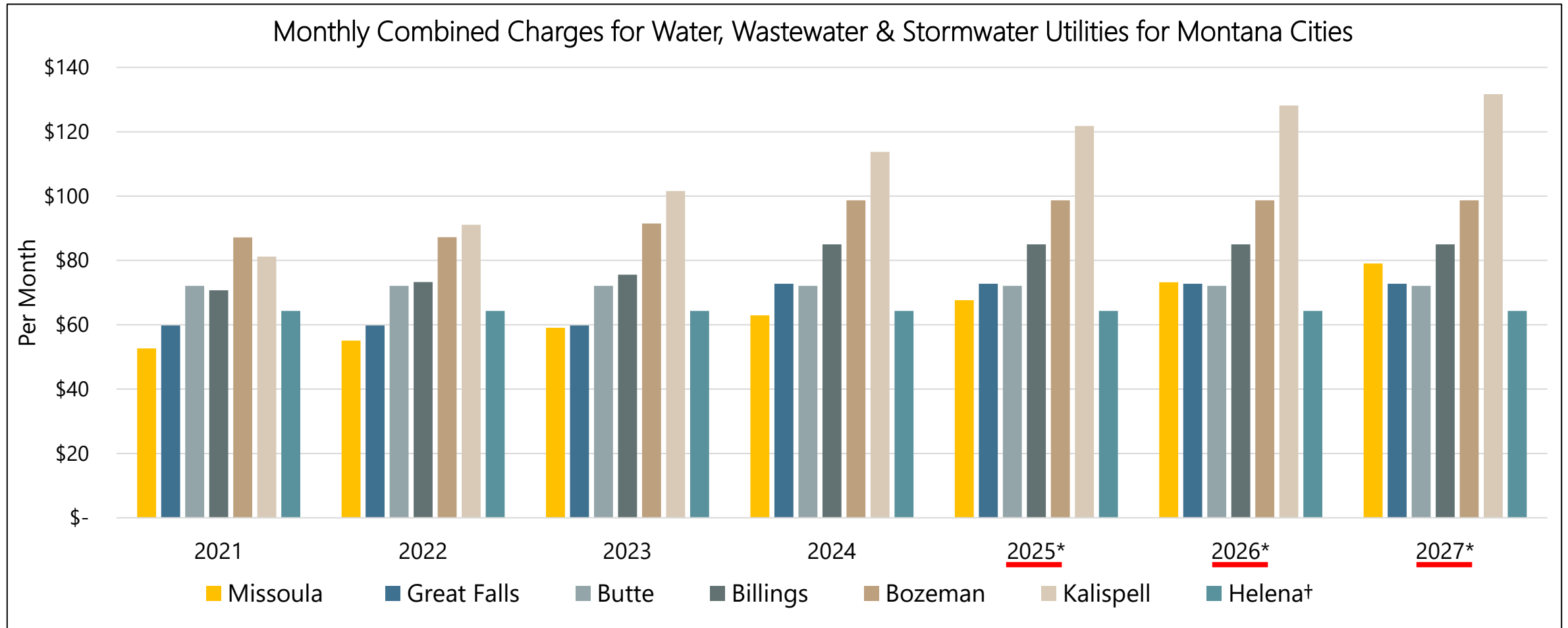
	Water			Wastewater			Stormwater		
	FY25	FY26	FY27	FY25	FY26	FY27	FY25	FY26	FY27
Debt Coverage (Require >125%)	125%	125%	132%	164%	136%	127%	142%	127%	154%
Days Cash on Hand (Target: 120 days)	200	162	159	162	196	116	167	128	144
Projected Rate Increase	7%	8%	8%	9%	9%	9%	6%	6%	6%

Combined utility rate increase for FY25 = \$4.75/mo., FY26 = \$5.52/mo., and FY27 = \$5.86/mo.

UTILITY RATES

COMPARED TO OTHER MONTANA CITIES

*Proposed rates for Missoula & Kalispell; all other cities are held constant at 2024 rates
†Helena's rates do not include stormwater



The background image shows a rural landscape under a clear blue sky. In the foreground, there is a field of tall green grass with some purple wildflowers. A chain-link fence runs across the middle ground. Behind the fence is a dark, rectangular building with a gabled roof. To the right of the building, a white truck is parked. In the far background, there are rolling green hills and a few scattered trees. The word "QUESTIONS" is overlaid on the left side of the image in a large, dark blue, sans-serif font.

QUESTIONS