



Master Parks & Recreation Plan for the Greater Missoula Area

Presented By

JANA DEWEY MCKENZIE, ASLA
PRINCIPAL, EDAW
FORT COLLINS, COLORADO

EDAW



Purpose of the Plan

- **Joint County and City Planning within Urban Area of Missoula to Define the Vision for “Green” Community Framework**
- **Identify Community Needs**
- **Define Types of Parks and Recreational Facilities**
- **Identifies Important Resources**
- **Conceptual Locations and Connections**
- **Goals, Policies and Design Criteria**
- **Priority Projects**
- **Implementation Tools**

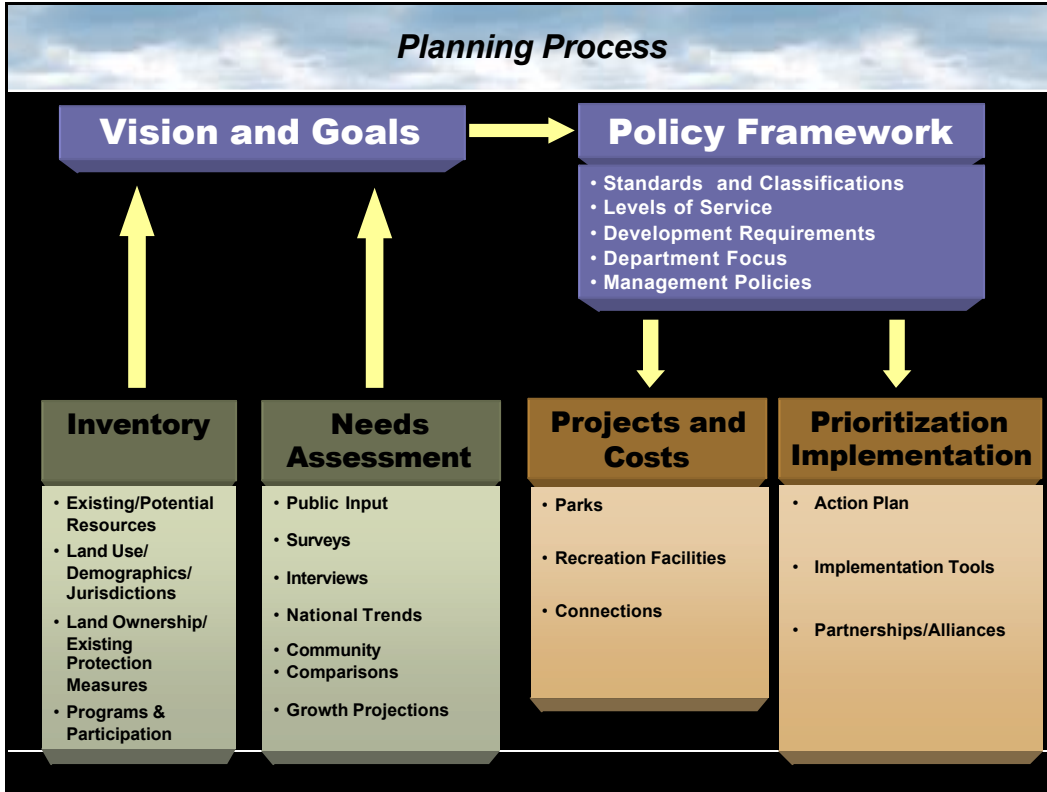


Related Plans

- 1995 Missoula Urban Area Open Space Plan and 2002 Report Card
- 1997 Missoula County Parks and Conservation Lands Plan
- 1998 Missoula Urban Area Comprehensive Plan
- 2001 Non-Motorized Transportation Plan
- 2002 Missoula County Growth Policy
- 2002 Aquatics Feasibility Study and Plan
- 2003 Interim Transportation Plan
- Montana SCORP 2003-2007
- Numerous Neighborhood Plans

Park and Recreation Plan Schedule

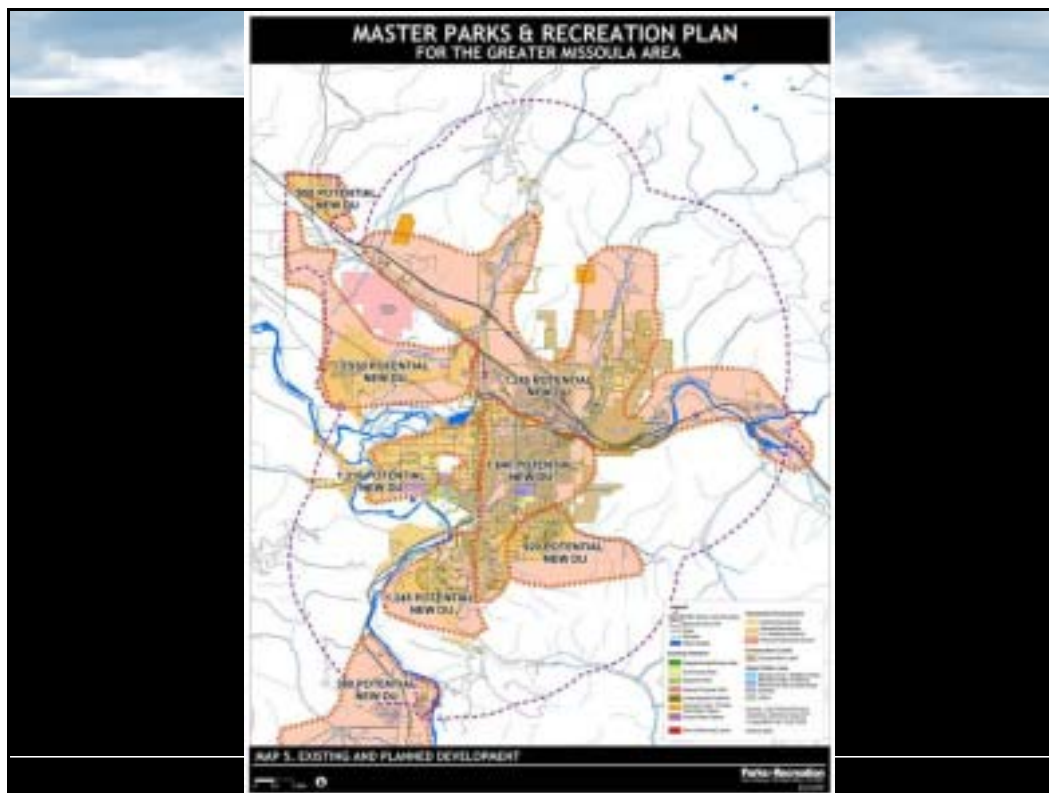
Tasks	May	Jun	Jul	Aug	Sep	Oct	Nov	Dec	Jan	Feb	Mar	Apr
1 Project Start-Up	—											
2 Team and Public Involvement												
Staff/TAC Meetings		●	●		●	●	●				●	
CAC Meetings		■	■		■	■	■		■	■		
City Council / Parks and Rec Board					▲		▲				▲	
Open House/Public Workshop							◆				◆	
3 Inventory	—	—	—	—	—	—	—	—	—	—	—	—
4 Needs Assessment												
Community Survey		—	—	—	—	—						
5 Vision, Goals and Policies												
					—	—	—	—	—			
6 Parks Plan												
						—	—	—	—	—		
7 Implementation Strategies and Action Plan												
						—	—	—	—	—	—	
9 Plan Production												
Preliminary Draft Plan									—	—		
Draft Plan										—	—	
Final Plan											—	—



- Goals and Policies**
- **Goal 1. Provide a wide range of recreational and leisure time opportunities for all citizens and visitors in Missoula.**
 - **Goal 2. Equitably distribute parks, recreational facilities and trails throughout the urban area.**
 - **Goal 3. Provide parklands, trails and recreational facilities that have community-wide significance.**
 - **Goal 4. Develop and maintain parks, recreational facilities, trails and open space areas at a high level of quality, appropriate for the type of use and nature of the facility.**

Goals and Policies

- **Goal 5. Protect and enhance the natural environment and develop parks, trails and outdoor recreational facilities in an environmentally sensitive manner.**
- **Goal 6. Develop adequate land acquisition, development and maintenance funding sources and tools to realize the master plan vision.**
- **Goal 7. Monitor, assess and adjust the existing intergovernmental agreements, tools, goals, policies, action plan and priorities to meet changing or unforeseen conditions and/or needs in the Missoula area.**



Public Parkland Classifications and Standards

- **Neighborhood Parks**
 - 2.5 ac / 1,000 pop.
 - 5-12 ac. preferable
 - ½ mile service radius
 - 10 minute walk



- **Pocket Parks**
 - only when larger park not possible - part of N. Park LOS standard
 - < 2 ac.
 - ¼ mile service radius



Public Parkland Classifications and Standards

- **Community Parks**
 - 4.5 ac / 1,000 pop.
 - 25 - 100 ac. preferable
 - 1 ½ mile service radius
 - sports complexes only one type of community park



Public Parkland Classifications and Standards

- **Regional Parks**
 - no level of service standard
 - portions may serve as community park
 - > 200 ac.
 - draws people from larger region for special facilities
 - typically partnerships between various govt. or non-profit agencies



Other Public Park and Conservation Lands Classifications and Standards

- **Visual Green Spaces**
 - No level of service standard
 - Usually small, high visible areas
- **Conservation Areas**
 - Various sizes and levels of public access. Cornerstones identified in Open Space Plan
 - Natural resource preservation priority
 - Minimal facility development



Other Public Amenities Classifications and Standards

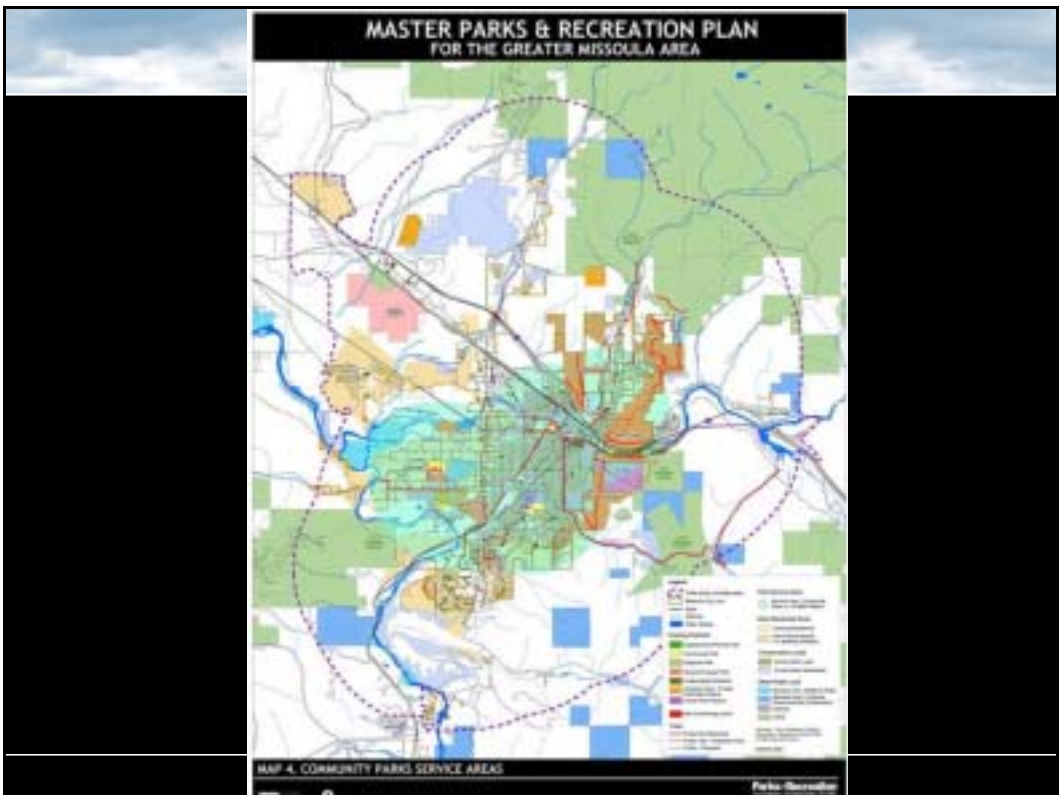
- **Trails and Connections**
 - **Core Commuter (off-street)**
 - **Neighborhood Connectors**
 - **Primitive**
 - **On-street walks and bike lanes**

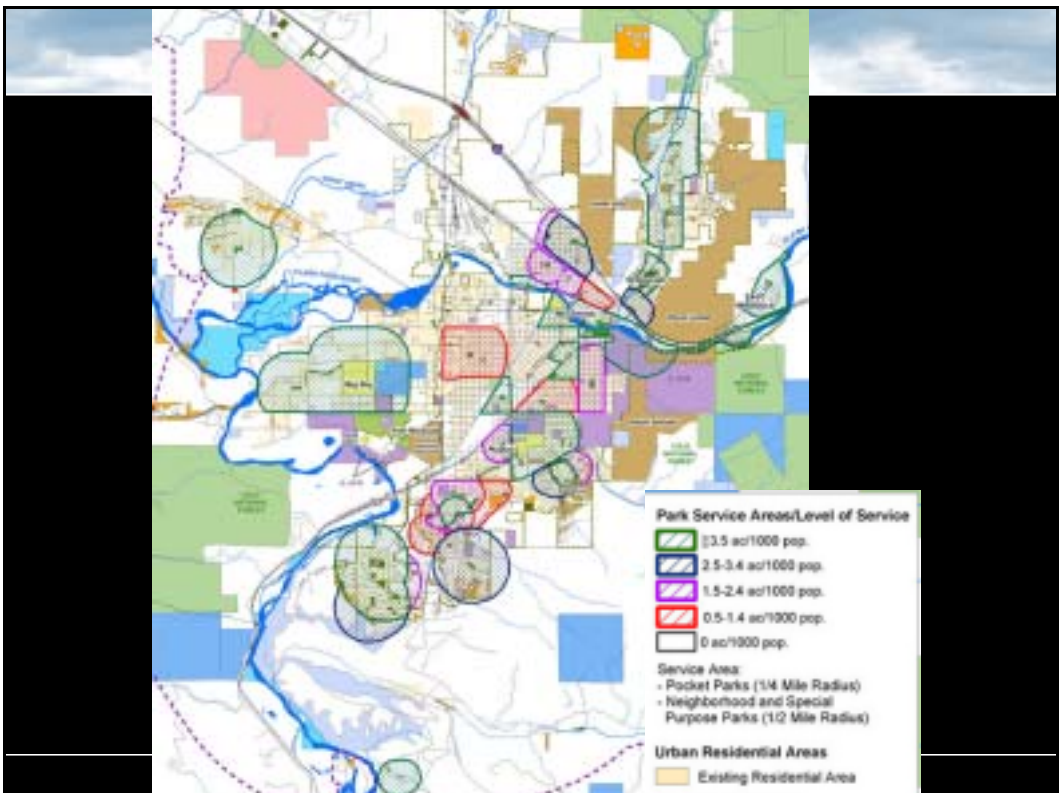
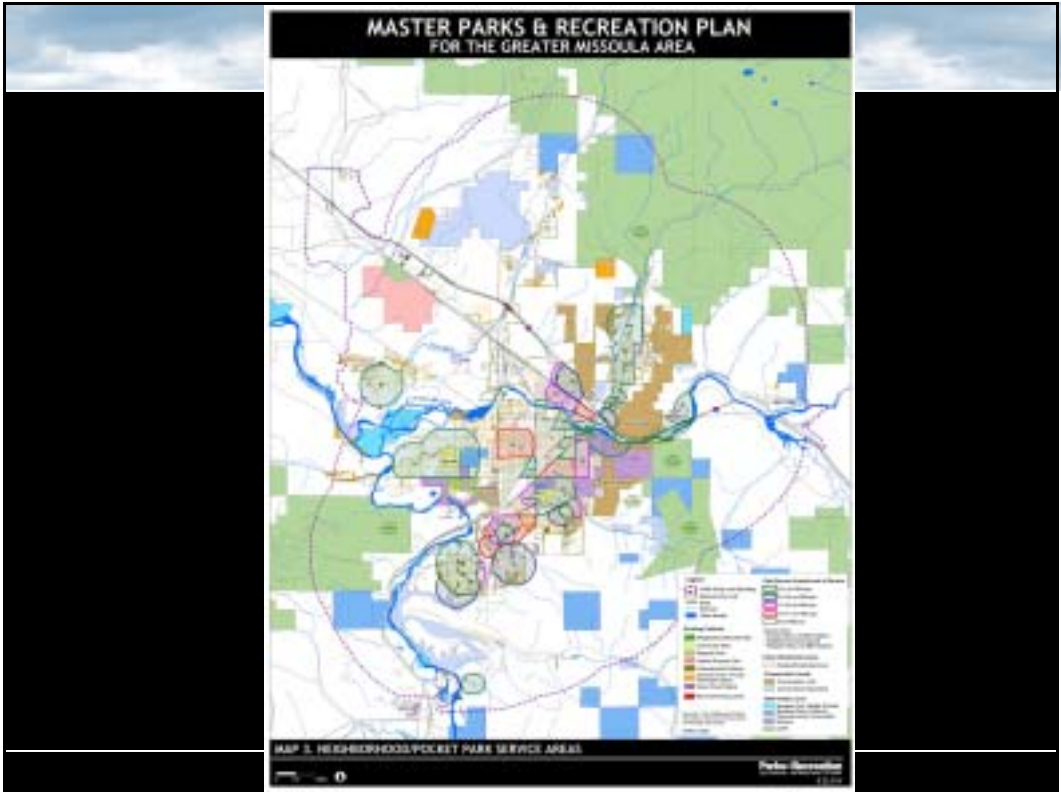


Other Open Space Lands

- **Common areas and non-conforming lands**
 - **Obtained through development process**
 - **Common areas in private ownership**
 - **numerous parcels (12+ acres) in public ownership that do not meet the standards for public parks or are not needed based on location or population.**







Community Comparisons

- **10 Communities**
Bozeman, Billings, Bellevue, Bellingham, Boise, Redmond, Boulder, Fort Collins, Loveland, Greeley
- **Compares parkland standards and level of service**
- **Compares level of service for specific recreational facilities and amenities**
- **Provides benchmark**

Recreational Facility	Facility or Acres per Population	
	Avg. of Other Communities Providing Facilities	City of Missoula Population: 57,057
Soccer Fields/Population	1:6,449	1:8,151
Football Fields/Population	1:19,739	1:8,151
Ball Fields/Population	1:3,772	1:2,594*
Basketball Courts/Population	1:6,637	1:4,389
City-operated Gyms/Population	1:67,734	None
Tennis Courts/Population	1:3,563	1:1,841
Pools/Population	1:28,830	1:28,529
Ice Rinks/Population	1:46,749	1:57,057
Skateboard Parks/Pop.	1:64,835	None
Inline Hockey Rinks/Population	1:81,225	None
Community Park		
Developed	518 acres	344 acres
Developed Park/Population	3.0 acres/1000	6.0 acres/1000
Parkland Standard	4.6 acres/1000	
Neighborhood Park		
Developed	181.7 acres	140 acres
Developed Park/Population	1.9 acres/1000	2.5 acres/1000
Parkland Standard	3.1 acres/1000	
Maintenance Staff (as parks, streetscapes and public grounds)	33.3 full-time & 24.0 part-time	26 Full-time equivalents
Areas Maintained (grounds and facilities maintained by the Park)	1,466 acres	3,935 acres
Annual Park Operation & Maintenance Budget (for parks, streetscapes, public grounds and facilities maintained by Park Department)	\$4,871,814	\$1,200,000
Maintenance Staff/Acres	1:36.8 acres	1:151 acres
Maintenance Budget Per City Resident	\$48.68 per resident	\$21.03 per resident

Community Comparisons

- **Neighborhood Parkland Level of Service Similar**
 - Missoula City 2.5 ac/1,000 pop.
 - Missoula Area 1.9 ac/1,000 pop.
 - Ave. of other communities 1.9 ac/1,000 pop.
- **Community Parkland Level of Service Higher**
 - Missoula City 6.0 ac/1,000 pop.
 - Missoula Area 4.1 ac/1,000 pop.
 - Ave. of other communities 3.0 ac/1,000 pop.
- **Maintenance budget lowest per capita of all cities**

Community Comparisons

- **Skateparks – Need 1-2 to keep up with other communities**
- **Soccer – slightly lower level of service than other communities**
- **Ballfields – on par, but existing fields too small**
- **Pools – replace outdoor pool and construct indoor pool to match average**
- **Gyms – other communities typically have at least one city gym.**
- **Tennis – much higher level of service**
- **FOLF, Inline Hockey – growing in popularity**

National and State Trends

Total National Participants by Activity – All Ages



Activity	Percent Change Since 1987	1999 Participants (in 1,000's)
Recreational Walking	Na	84,096
Recreational Bicycling	Na	56,227
Fishing	-7%	54,320
Basketball	+10%	39,368
Day Hiking	NA	39,235
Fitness Walking	+32%	35,976
Running/Jogging	-8%	34,047
Golf	+7%	28,216
Inline Rollerskating	+494%	27,865
Volleyball	-33%	24,176
Softball	-36%	19,766
Football	Na	18,717
Soccer	+14%	17,582
Horseback Riding	Na	16,906
Tennis	-21%	16,817
Roller Skating (4 wheel)	-54%	12,404
Baseball	-20%	12,069
Mountain Biking	+419%	7,849
Skateboarding	-28%	7,807
Archery	-19%	6,937
Artificial Wall Climbing	Na	4,817
BMX Bicycling	Na	3,730

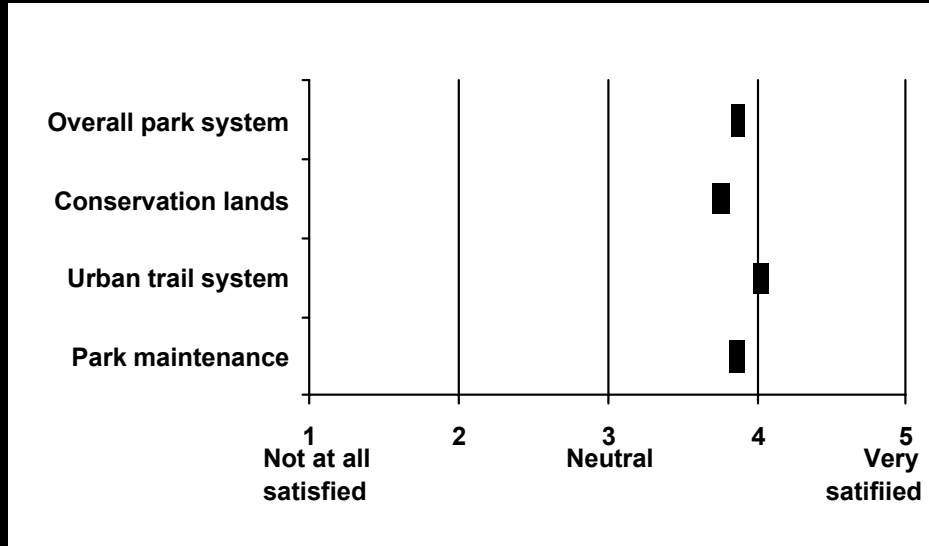
Sports Participation Trends 1999, American Sports Data, Inc. for SGMA, January 2000

Missoula 2003 Urban Area Parks Survey

- Developed and administered by University of Montana
- Administered between Oct 5 and Oct 15, 2003
- Random sample generated by computer process to match distribution between residents in city or unincorporated area
- 434 completed telephone surveys
- 82.5% response rate
- Sampling error +/- 5%

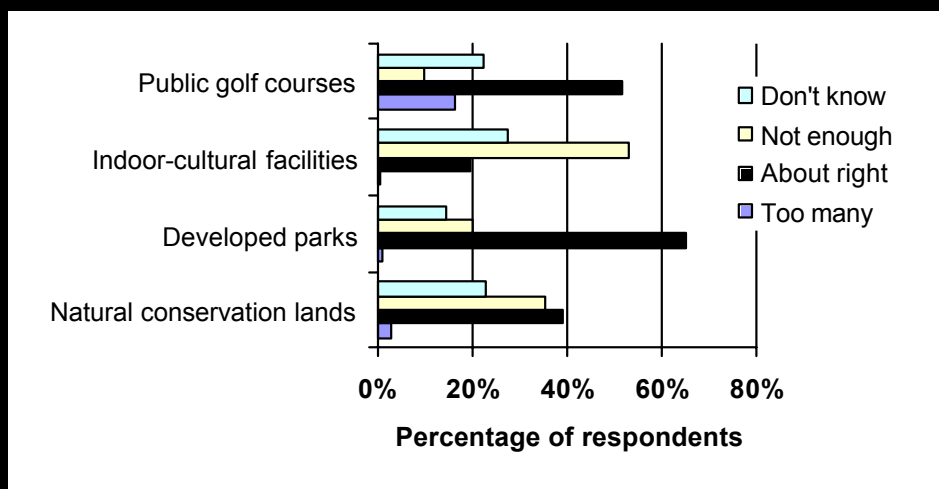
Missoula 2003 Urban Area Parks Survey

Satisfaction levels



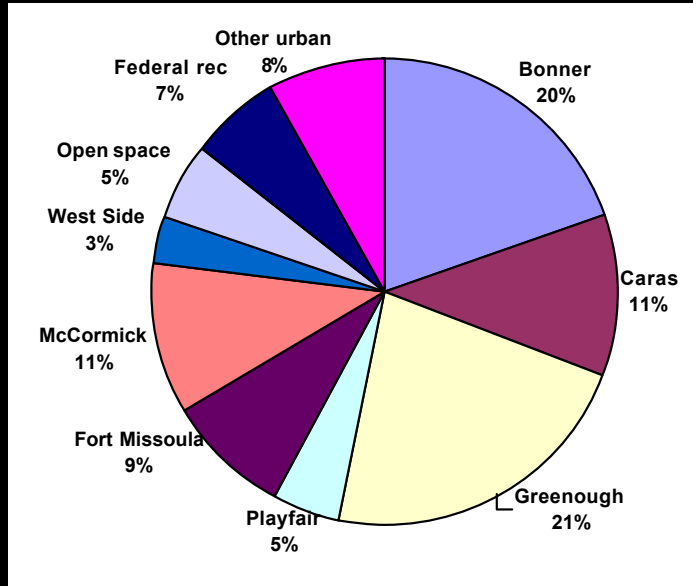
Missoula 2003 Urban Area Parks Survey

Are there enough of these types of parks?



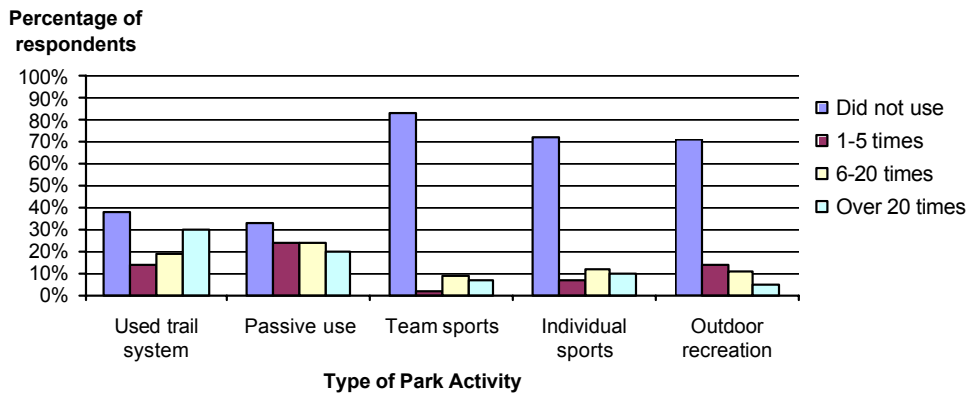
Missoula 2003 Urban Area Parks Survey

Favorite Park

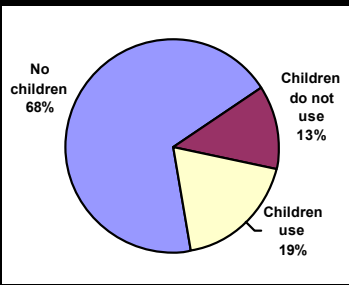


Missoula 2003 Urban Area Parks Survey

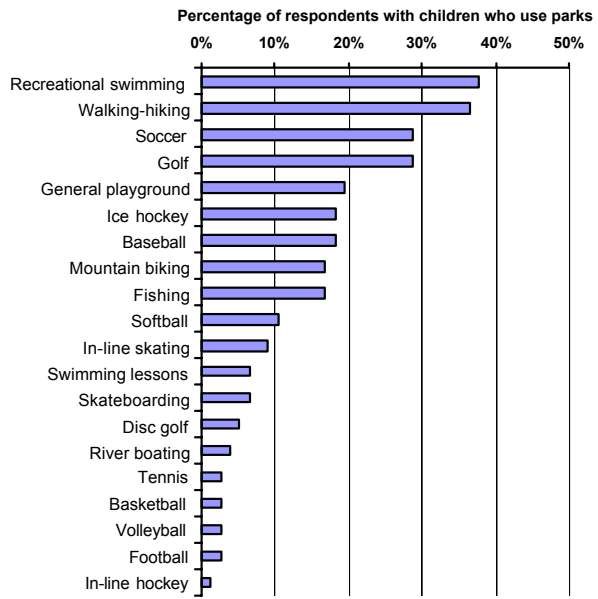
Adult Use of Parks



Missoula 2003 Urban Area Parks Survey

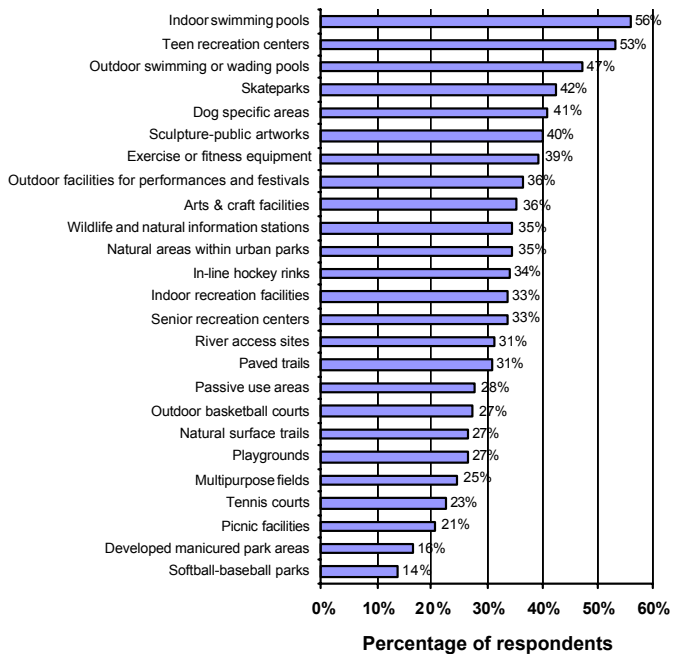


Children's use of parks



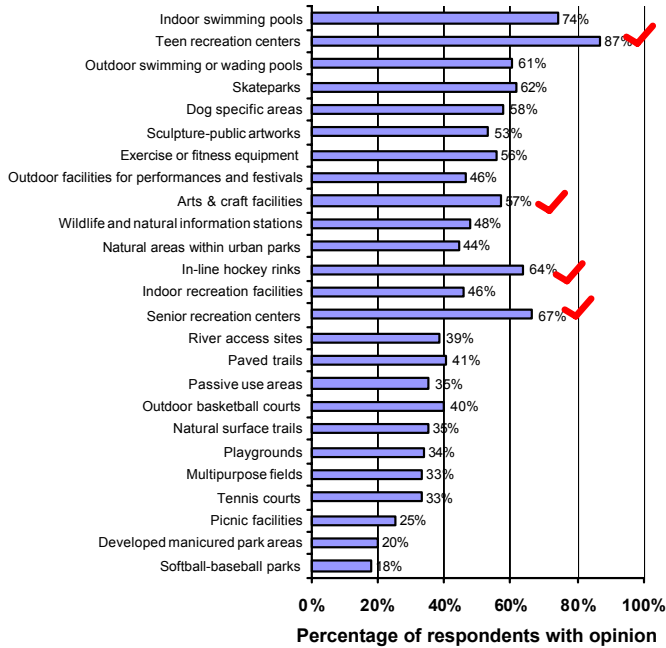
City of Missoula 2003 Urban Area Parks Survey

Not Enough of...



City of Missoula 2003 Urban Area Parks Survey

Not Enough of...
according to
those with an
opinion



User Group Interviews

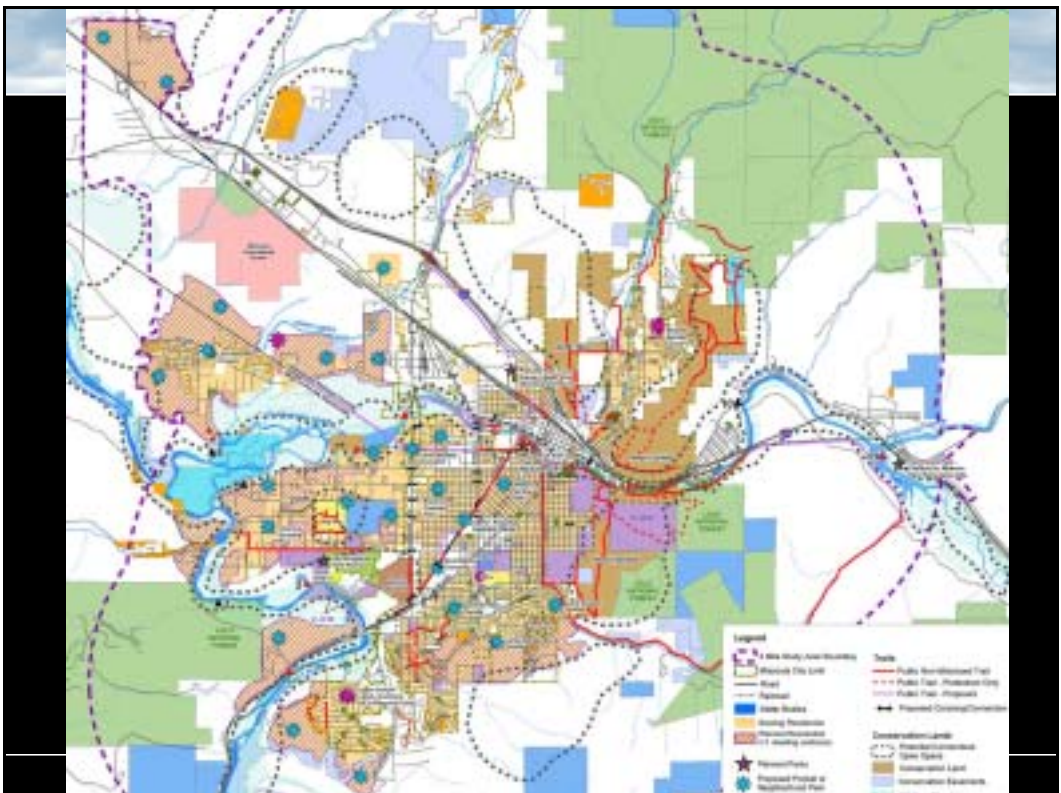
- Contacted a sampling of recreation program providers, conservation organizations and other user groups
- Asked for participation levels and opinions regarding availability and adequacy of facilities and recreational opportunities
- Most groups are fairly happy
- Poor maintenance of facilities most frequent comments, including restrooms
- Conservation groups and service organizations are very active in the community

Summary of Needs Assessment

- Trails and walking paths are high priorities for residents
- Multi-purpose recreation / leisure center is in demand (gym/field house, seniors, arts/crafts, teens)
- Parkland level of service overall adequate, but is low in select areas
- Softball and soccer fields of adequate size and quality needed
- Skateboarding, in-line hockey, dog parks in demand
- Park maintenance is an issue (facility quality, weed control and invasive species)
- Additional river access desired

Parkland Needs

Neighborhood/Pocket Parks	City Level of Service 2000	Urban Area Level of Service 2000	Urban Area Level of Service 2020
Existing or Projected Population	57,053	83,348	108,098
Existing Developed Neighborhood/Pocket Parkland	140 acres	155 acres	155 acres
Level of Service (if no additional lands are developed)	2.5 ac/1000 pop	1.9 ac/1000 pop	1.4 ac/1000 pop
Need based on 2.5 ac/1,000 pop. Standard	140 acres	208 acres	270 acres
Deficit based on 2.5 ac/1,000 pop. Standard	0 acres	<53 acres>	<115 acres>
Additional Neighborhood Parks Needed	0	5-9 parks	14-20 parks
Community Parks			
Existing or Projected Population	57,053	83,348	108,098
Existing Community Parkland	344 acres	344 acres	344 acres
Level of Service (if no additional lands are developed)	6.0 ac/1000 pop	4.1 ac/1000 pop	3.2 ac/1000 pop
Need based on 4.5 ac/1,000 pop. Standard	257 acres	375 acres	486 acres
Deficit based on 4.5 ac/1,000 pop. Standard	+87 acres	<31 acres>	<142 acres>
Additional Community Parks Needed	0	1 park	2-3 parks



Projects

- **Neighborhood Parks**
- 14 to 20 needed based on population growth - 26 on master plan
- Additions, enhancements and improved access to existing parks
- Develop selected existing park sites
- Partner w/schools and other agencies / depts. to serve exist'g areas
- Acquire and develop new parks



Projects

- **Community Parks**
- McCormick Park Enhancements
- Fort Missoula Park Development
- Playfair Park Enhancements
- Big Sky Park Enhancements
- 2-3 new Community Parks



Projects

- **Recreation Facilities**
 - Aquatics Center
 - Teen and Senior Facilities
 - Arts, Crafts and Indoor Cultural Facilities
 - Other specific facilities for self-directed and programmed use
- **Trail connections**
 - Primary commuter off-street trail system
 - Secondary neighborhood connections to parks, conservation areas, schools and other popular destinations. Street tree program important.



Projects

- **River Access – 11 points**
- **Conservation Lands**
 - Continue protection of cornerstone open spaces and unique natural environments of community-wide significance.



Planning Actions

- **Management Plans**
- **Master Plans – Playfair and Big Sky Revisited**
- **Continued Trails Planning**
- **Multi-purpose Recreation / Leisure Center Plan**
- **Parks and Recreation Department, County Parks Program and OPG coordinate on Neighborhood Plans**



Upgrades and Maintenance Actions

- **Update parks to ADA and safety standards**
- **Invasive species control**
- **Establish maintenance standards**



Administrative Actions

- **Prepare annual report card**
- **Update subdivision ordinance**
- **Upkeep on the parks database**
- **Establish interdepartmental and interagency coordination systems**
- **Transfer county parks within city limits to city ownership and management.**

Funding Actions

- **Consider bond issue to acquire park land in advance of development.**
- **Assess level of community support for property, local option sales tax and/or development fees.**
- **Partner with school districts.**
- **Explore selling, trading or converting use of non-conforming lands.**
- **Explore feasibility of special districts or park district.**



**Master Parks &
Recreation Plan for the
Greater Missoula Area**